

**PRODUCTION
RELEASE**

NOTE:
THIS DRAWING INCORPORATES
THIRD ANGLE PROJECTION
INTERPRET IN ACCORDANCE WITH
ANSI Y14.5-1995

REVISIONS		
REV	DESCRIPTION	APPROVED
G	ADDED 2.5 AND 4 GHz TO THIS SHEET	06/19/2010 D. Saunders

SPECIFICATIONS

ELECTRICAL

FREQ. RANGE: _____ DC TO 2.5, 4.0, & 6.0 GHz
 ATTENUATION: _____ SEE TABLE
 VSWR(MAX): _____ 1.15:1 (DC - 2.5 GHz)
 _____ 1.20:1 (2.5 - 6 GHz)
 WEIGHT(MAX): _____ 1.0 oz(28 g)
 POWER: _____ 2 WATTS AT +25°C(AVG)
 DERATED LINEARLY TO 10% @ +125°C
 300 WATTS (PEAK)

MATERIALS AND FINISH

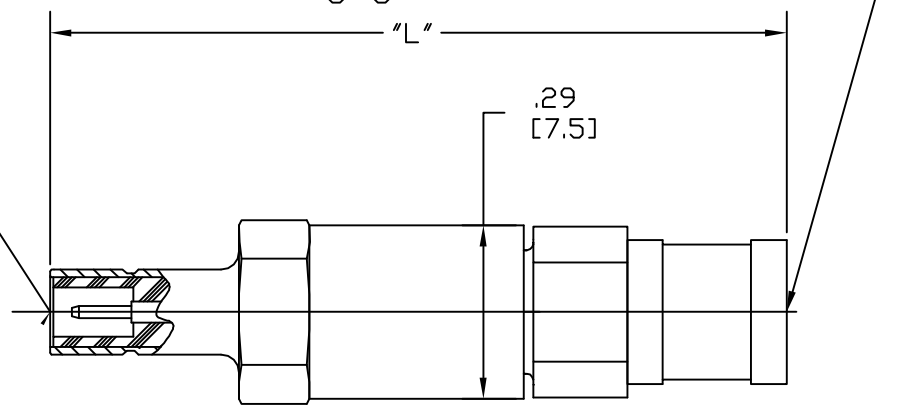
- HOUSING & CONNECTOR BODIES
>BRASS WITH NICKEL PLATING
- DIELECTRICS
>TEFLON PER ASTM-D-1710
- CONTACTS
>BERYLLIUM COPPER WITH GOLD PLATING PER ASTM-B488
- RESISTIVE ATTENUATOR ELEMENT
>PROPRIETARY FILM ON ALUMINA CERAMIC

Interfaces Conform to MIL-STD-348 for SMB.
 Please Note that the Leading Edge of the SMB Male Housing can vary from a sharp corner to an .015" x 45° Chamfer which can yield a wide variance of Engage Forces. XMA uses an .010" x 45° Chamfer on its test Fixture.

PART No.	ATTEN. (dB)	L
NOMINAL DEVIATION		
5182-6004-01	1.0	±0.3 1.25" [31.7]
	-02	±0.3
	-03	±0.3
	-04	±0.3
	-05	±0.3
	-06	±0.3
	-07	±0.3
	-08	±0.3
	-09	±0.3
	-10	±0.3
	-11	±0.3
	-12	±0.3
5182-6004-15	15.0	±0.4 1.40" [36.0]
	-20	±0.5
	-30	±0.5

OTHER DB VALUES AVAILABLE FROM XMA

SMB JACK/SOCKET
 PER MIL-STD-348
 Engage Max. 14 Lbs.
 Disengage Min. 3 Lbs.



ORDERING INFORMATION

FREQ. RANGE	PART NUMBER TO ORDER IS	VSWR
DC-2.5 GHz _____	5182-6002-DB	VSWR 1.15 TO 2.5 GHz
DC - 4 GHz _____	5182-6004-DB	VSWR 1.15 TO 2.5/1.20 2.5-4 GHz
DC - 6 GHz _____	5182-6006-DB	VSWR 1.15 TO 2.5/1.20 2.5- 6 GHz

FOR THE "DB" REPLACE WITH 2 DIGIT dB NEEDED
 EX.: FOR 4 GHz, 3 DB PN IS 5182-6004-03
 FOR 6 GHz, 20 DB PN IS 5182-6006-20

FOR UNMARKED ADD "U" ON END OF DB - ONLY BAG WILL BE MARKED

DRAWING PRACTICES PER ANSI Y14.5 MIL-STD-100 & 1000	UNLESS OTHERWISE SPECIFIED DIMENSIONS IN DECIMALS INCH MM [.76]	DRAWN BY: SAUNDERS DATE
DIMENSIONS ARE IN INCHES AND APPLY BEFORE/AFTER PROCESSING	.XX" .05" [.25]	CHECKED DATE
SURFACE FINISH 63 ✓	.XXX" .030" [.25]	ENG. DATE
ANGLES ±	.XXXX" .015 [.127]	THESE DRAWINGS AND SPECIFICATIONS ARE THE PROPERTY OF XMA CORP. OR OMNISPECTRA AND SHALL NOT BE REPRODUCED, COPIED NOR USED IN WHOLE OR IN PART AS A BASIS FOR THE MANUFACTURE OR SALE OF OTHER ITEMS WITHOUT THE EXPRESS WRITTEN PERMISSION OF XMA CORP.
MATERIAL: SEE NOTES	UNLESS OTHERWISE NOTED DIA IS CONCENTRIC <.003 T.I.R.	SIZE C CAGE CODE 3HT76 DWG NO. 5182-6006-DB
SCALE 6:1	PLT NO. AREA SURFACE FINISH XXX	SHEET 1 OF 1

www.XMACorp.com Sales@XMACorp.com
XMA Omni Spectra
 Phone: 603-222-2256 Fax: 603-222-2259
 150 Dow Street, Manchester, NH 03101

SMB ATTENUATOR

SCALE 6:1 PLT NO. AREA SURFACE FINISH XXX SHEET 1 OF 1