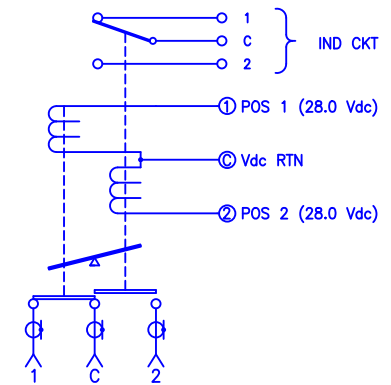


REVISIONS				
ZONE	REV	DESCRIPTION	DATE	APPROVED



SPECIFICATION:

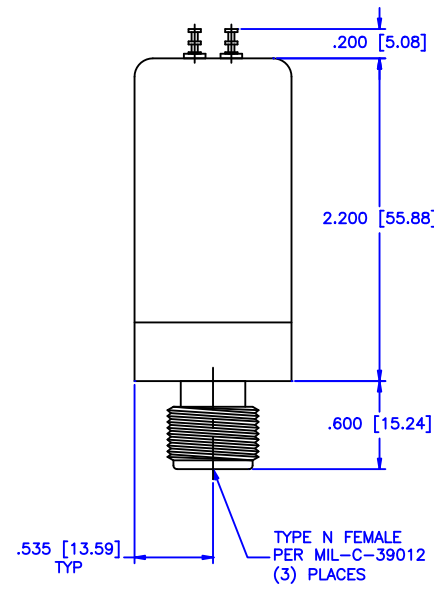
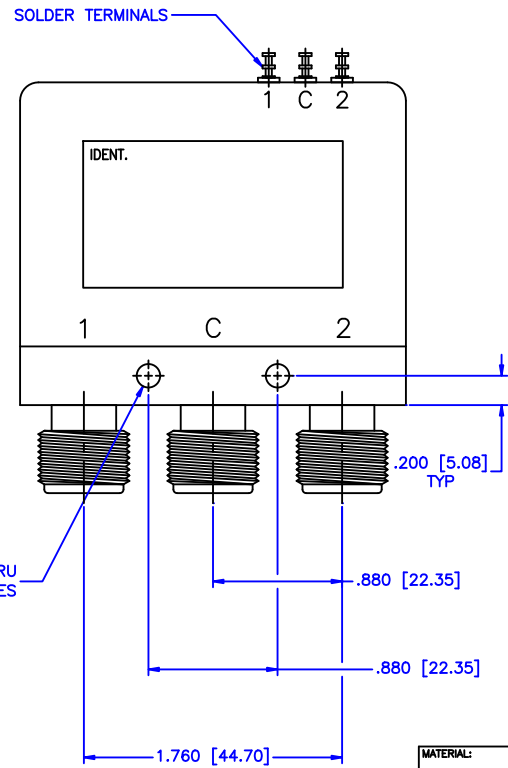
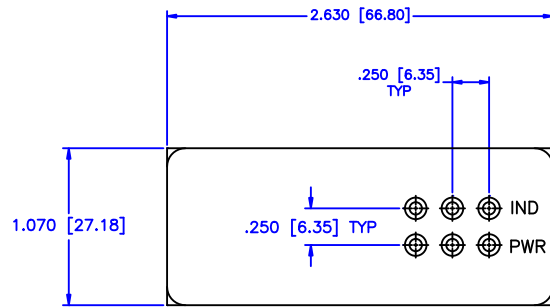
FREQUENCY RANGE (GHz): DC-1.0

VSWR (Max.): 1.20:1

INSERTION LOSS (dB): 0.20

ISOLATION (dB): 80

IMPEDANCE (Ohms): 50



MECHANICAL

CONTACT: BREAK BEFORE MAKE

ACTUATOR: LATCHING

SWITCHING SPEED: 20 mSEC MAX

ELECTRICAL

ACTUATOR VOLTAGE: 28.0 Vdc (22.0-32.0 Vdc)

ACTUATOR CURRENT: 0.100 A MAX @ 28.0 Vdc

POWER HANDLING: 350W CW @ 1.0 GHz

ENVIRONMENTAL

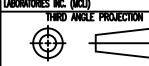
OPERATING TEMP: -54°C TO +90°C

SINE VIBRATION: 30G'S rms

LIFE: 1,000,000 CYCLES

RANDOM VIBRATION: 20G'S rms

MATERIAL:		MCLI MICROWAVE COMMUNICATIONS LABORATORIES INC. 7255 30TH AVE. N. SAINT PETERSBURG, FL 33710 TEL: (727) 344-6254 FAX: (727) 381-6116 http://WWW.MCLI.COM		SCALE: N/A
UNLESS OTHERWISE SPECIFIED: TOLERANCES IN (INCHES) OR (mm) (MILLIMETERS) FRACTIONS: $\pm 1/64$ DECIMALS: $\pm .01 \pm .005$ ANGLE: $\pm 1/2^\circ$		DRAWING TITLE: ELECTROMECHANICAL SWITCHES		SHEET: N/A
DRAWN: Paiboon Luekhamhan		DATE: 04-03-2001		PART NO. K5-1-LI
APPROVED: T. Nguyen		DATE: 04-03-2001		CAGE CODE: OD2L5 SIZE: N/A REV: N/A DWG NO. 81673



DO NOT SCALE THE DRAWING