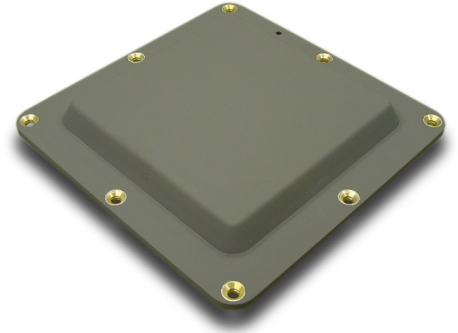


## N100-6 GPS Antenna

The N100-6 GPS antenna offers an innovative polarimetric solution for multiple element outputs and has been designed to provide a significantly reduced size aperture for Antijam GPS reception over the full military GPS M-Code bandwidth. The N100-6 footprint is 7.0" x 7.0" and provides a four (4) element antenna aperture with seven (7) outputs similar to larger arrays. It is designed to receive right-hand circularly polarized (RHCP) radiated signals from NAVSTAR GPS satellites and couples the radio frequency (RF) signal to the antenna electronics (not supplied by Exelis) via seven (7) coaxial cables. When used in conjunction with AE equipment such as GAS-1 or ADAP null steering electronics, the four (4) element array is used to adaptively steer nulls in the presence of interfering jamming signals. The antenna assembly contains the antenna elements, radome, housing, and TNC female bulkhead connectors. Microstrip patch type radiators provide a low-profile package while a hybrid feed incorporated in the reference element allows operation over a wide temperature range without the temperature induced detuning often associated with microstrip patch elements. The three (3) auxiliary elements provide dual orthogonal linear polarization outputs permitting additional degrees of freedom as compared to conventional 4 element arrays. A one-piece composite radome and an aluminum baseplate provide a robust combination for severe vibration, acoustic noise, and rain-erosion requirements. For applications such as the AV-8B, helicopters and numerous classes of UAS platforms.



### SPECIFICATIONS

#### Electrical

Frequency Range	
L2	1227.6 ± 12.0 MHz
L1	1575.42 ± 12.0 MHz
VSWR	
Reference Element	1.5:1
Auxiliary Elements	3.0:1
Gain	>-3.5 dBic over 95% of 160° cone at band centers
Polarization	
Reference Element	RHCP
Auxiliary Elements	Linear
Null Depth	>20 dB typ
Radiation Pattern	Hemispherical
Power Handling	Receive Only

#### Mechanical

Weight	3.0 lbs max
Military	MIL-E-5400 MIL-STD-202 MIL-STD-810
Finish	White, Gray

# N100-6

## GPS Antenna

---

### OUTLINE DIMENSIONS

Inches (Centimeters)

---

Consult with factory for mounting specifications.

EDO Corporation  
a subsidiary of Exelis Inc.  
585 Johnson Avenue  
Bohemia, NY 11716  
USA  
Ph #: 631 218-5500  
E: [antenna.info@exelisinc.com](mailto:antenna.info@exelisinc.com)  
[www.exelisinc.com/antennas](http://www.exelisinc.com/antennas)

# EXELIS

Exelis is a registered trademark  
of Exelis Inc.

Copyright © 2013 Exelis Inc.