

Product Features

- GaN on SiC Broadband High Power Amplifier
- 20 ~ 1000MHz Operation Bandwidth
- Small Signal Gain 36dB min.
- 40W Typical. @ P3dB

Applications

- General Purpose



Package Type : DP-75

Description

The power amplifier module is designed for Broadcasting, Telecommunication, Medical and Other markets.

Operating frequency range is from 20 ~ 1000MHz.

Gallium Nitride on SiC technology is used and attached on an aluminum sub carrier. Full in/out matching for broadband performance is already applied.

Improved thermal handling by patented technology.

Electrical Specifications @ $V_{CC} = 28V$; $T_c = 45^\circ C$; $Z_S = Z_L = 50\Omega$

PARAMETER	UNIT	MIN	TYP	MAX	CONDITION
Operating Frequency	MHz	20	-	1000	-
Small Signal Gain	dB	36	38	40	-
Gain Variation vs Frequency	dBpp	-	± 1	± 2	-
P_3 dB	dBm	44	46	-	20 ~ 300MHz
		42	45	-	300 ~ 600MHz
		41	43	-	600 ~ 1000MHz
OIP3 @ $P_o = +33dBm$ (1MHz Tone spacing, CW 2-Tone)	dBm	51	53	-	20 ~ 300MHz
		46	48	-	300 ~ 600MHz
		43	45	-	600 ~ 1000MHz
Input Return Loss	dB	-	-12	-7	-
Output Return Loss	dB	-	-8	-5	-
2 nd Harmonic suppression	dBc	-	-34	-31	CW 1-tone @ $P_o = +30dBm$, Freq 400MHz
Supply Voltage	V	27.5	28	30	$V_{cc}(=V_{ds})$
Quiescent Current consumption	A	1.9	2.1	2.3	-
Current Consumption	A	-	3.5	4	CW 1-tone @ $P_o = +46dBm$
On/Off Switching Time*	uS	-	3	5	On : TTL "Low"
					Off : TTL "High"(30mA@Disable)
Shut Down or Switch On/Off TTL Voltage**	V	0	-	0.5	On : TTL "Low"(Enable)
		2.5	5	5.5	Off : TTL "High"

Note.

*. Gate On/Off : High speed switching

**. Drain On/Off : 300ms delay

Absolute Maximum Ratings

PARAMETER	UNIT	RATING
Input RF Power	dBm	15
Supply Voltage	V	30
Load Mismatch Value	-	3 : 1 @all load phase

* Input Signal Condition : CW 1-Tone

Environmental Characteristics

PARAMETER	UNIT	MIN	TYP	MAX	SYMBOL
Operating Case Temperature	°C	-10	-	80	Tc
Storage Temperature	°C	-40	-	105	Tstg
Vibration	MIL-STD-810G Method 514.6 ANNEX C				VI

Ordering Information

Part Number	Package
RWP05040-10	Pallet
RWP05040-1H*	Module assembled with RWP05040-10

* RWP05040-1H is a SMA connectorized housing version of RWP05040-10. Electrical parameters are all same as RWP05040-10.

For more information, please contact RFHIC

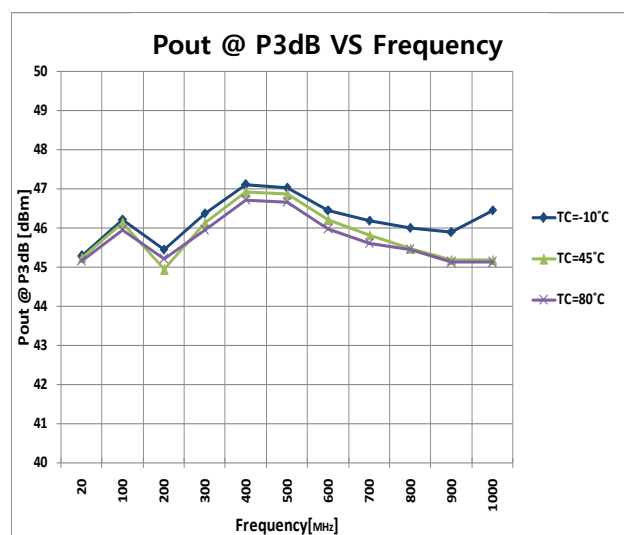
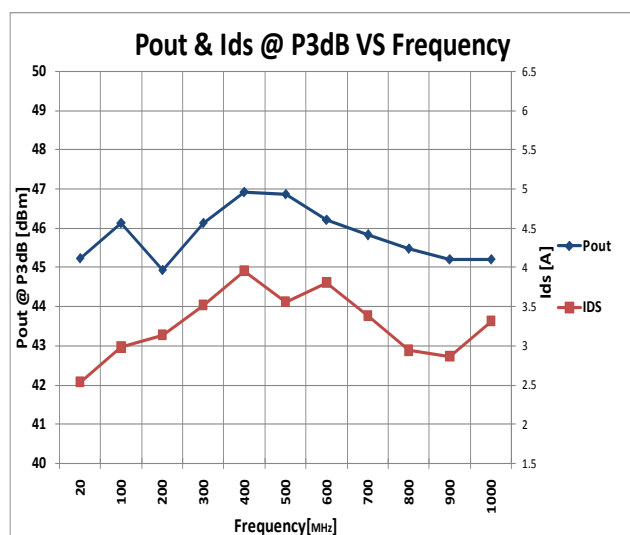
Mechanical Specifications

PARAMETER		UNIT	TYP
Dimension	Package	mm	70(L) x 50.8(W) x 17.1(H)
	Housing		90(L) x 75(W) x 25(H)
Weight	Package	g	55
	Housing		250
Housing RF IN/OUT Connector		-	SMA Female
Cooling		-	External Heat-sink

*Dimension and weight may change without notice.

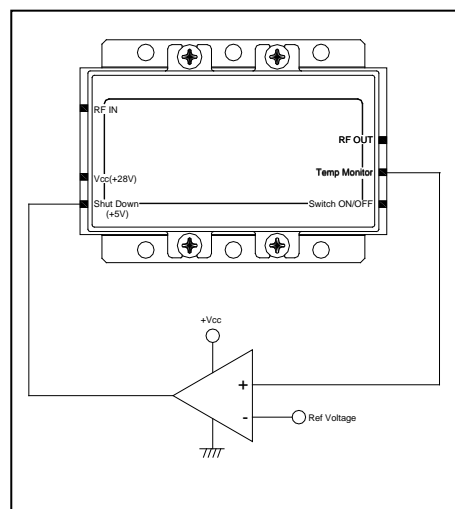
Typical Performance @ 25°C

Frequency	P1dB	P3dB	Current @P1dB	Current @P3dB	2nd Harm @30dBm	OIP3 (30dBm/Tone)
(MHz)	(dBm)	(dBm)	(A)	(A)	(dBc)	(dBm)
20	44.0	45.3	2.04	2.23	-34.4	53.2
100	44.2	46.2	2.07	2.44	-33.8	53.1
200	44.7	46.5	2.20	2.67	-32.6	53.1
300	44.5	46.1	2.21	2.56	-32.3	52.8
400	44.0	46.1	2.10	2.66	-31.8	52.4
500	43.1	45.1	1.90	2.25	-31.3	50.4
600	40.7	43.2	1.89	2.49	-31.9	49.2
700	40.8	44.7	1.92	2.60	-33.9	46.3
800	40.8	43.7	1.85	2.45	-35.0	45.2
900	41.5	44.2	1.95	2.54	-41.5	45.6
1000	43.2	44.3	2.63	2.53	-44.6	45.3



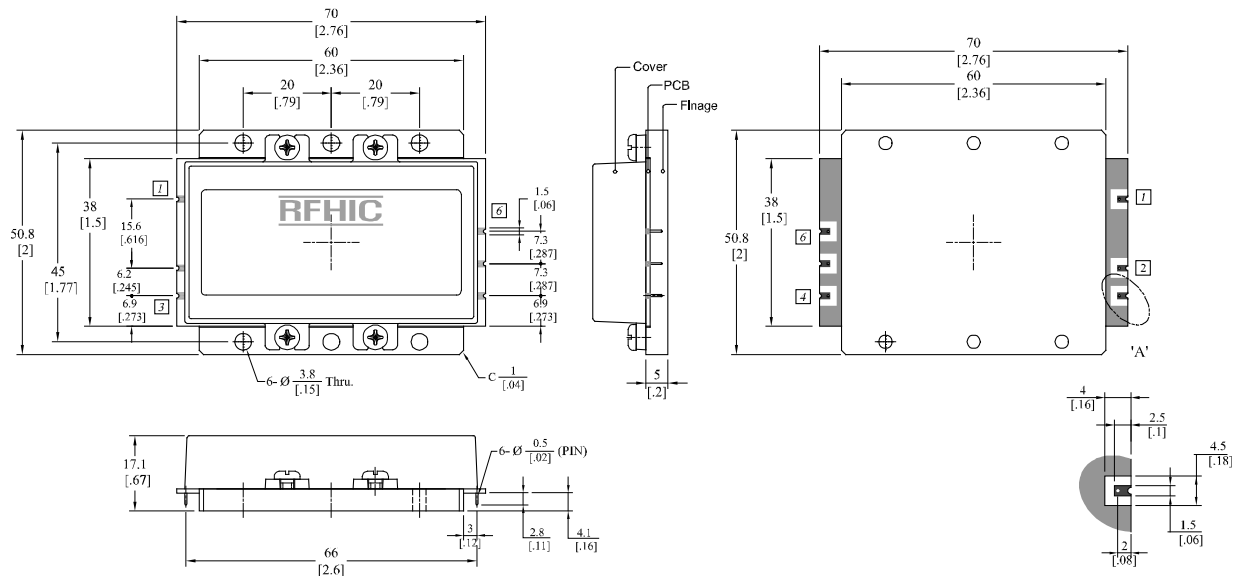
Precautions

1. This product is designed to be used for broadband amplification. Heat generation is higher when there is no RF signal in the device. Therefore, the worst case scenario is when there is no RF signal, and the amplifier is “on” with current draw. The temperature must be calculated properly. Case temperature must maintain below 80°C. Right side drawing notes how to use a temperature monitoring function to protect against overheating.
2. Thermal Grease or Metal Thermal Interface Materials are recommended for heat dissipation. An example would be spreading thermal grease on the bottom of the device



Comparator Block (with hysteresis gap)

Package Dimensions (Type: DP-75)

* Unit: mm[inch] | Tolerance: ± 0.2 [.008]

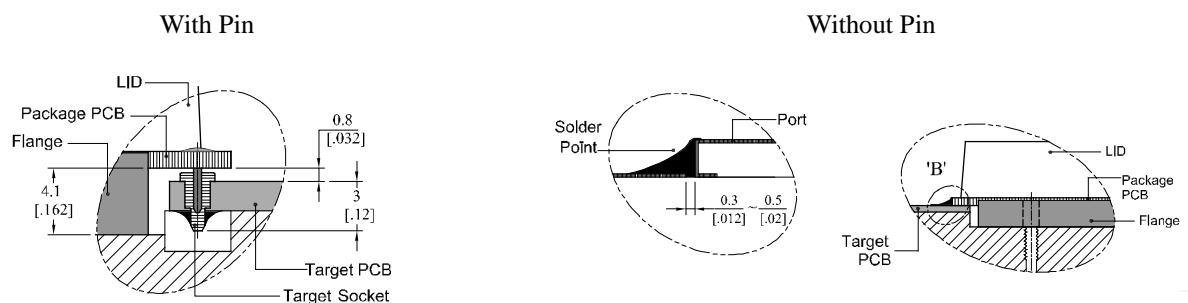
Pin Description			
Pin No	Function	Pin No	Function
1	RF IN	4	Switch ON/OFF
2	Vcc(+28V)	5	Temp Monitor
3	Shut Down(+5V)	6	RF OUT

* Terminal Pin Information : ASK206091,AA (Acethink, Pin) , ASK20556,AA-1(Acethink, Pin Socket)

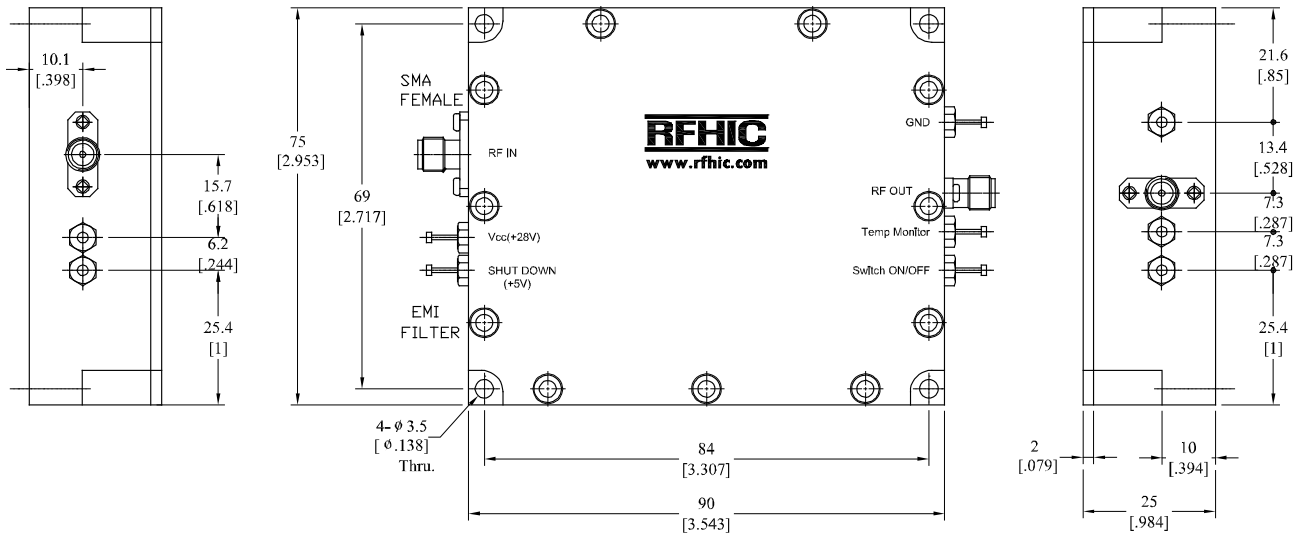
* Recommended Screw Torque : 8.0kgf.cm ± 1 using SEMS M3 10mm Bolt

How to connected the package to a target

PCB



SMA Connectorized Housing Dimensions



Revision History

Part Number	Release Date	Version	Modification	Data Sheet Status
RWP05040-10	2014.5.23	2.9	Condition & Graph modification □	-
RWP05040-10	2014.4.2	2.8	Mechanical Specifications	-
RWP05040-10	2013.10.18	2.7	Parameter & Graph modification □	-

RFHIC Corporation reserves the right to make changes to any products herein or to discontinue any product at any time without notice. While product specifications have been thoroughly examined for reliability, RFHIC Corporation strongly recommends buyers to verify that the information they are using is accurate before ordering. RFHIC Corporation does not assume any liability for the suitability of its products for any particular purpose, and disclaims any and all liability, including without limitation consequential or incidental damages. RFHIC products are not intended for use in life support equipment or application where malfunction of the product can be expected to result in personal injury or death. Buyer uses or sells such products for any such unintended or unauthorized application, buyer shall indemnify, protect and hold RFHIC Corporation and its directors, officers, stockholders, employees, representatives and distributors harmless against any and all claims arising out of such unauthorized use.

Sales, inquiries and support should be directed to the local authorized geographic distributor for RFHIC Corporation. For customers in the US, please contact the US Sales Team at 919-677-8780. For all other inquiries, please contact the International Sales Team at 82-31-250-5078.