



Medium Power 50 Watts RF Load Up To 3 GHz With
SMA Female Input Square Body Nickel Plated Brass

TECHNICAL DATA SHEET

PE6232

Configuration

Connector	SMA Female
Heat Sink	Brass, Nickel
Connection Method	Standard
Body Style	Straight

Electrical Specifications (Values at 25°C, sea level)

Description	Minimum	Typical	Maximum	Units
Frequency Range	DC		3	GHz
Impedance			50	Ohms
VSWR			1.25:1	
Input Power			50	Watts
Peak Power			1	KWatts

Mechanical Specifications

Temperature

Operating Range	-55 to +125 deg C
-----------------	-------------------

Size

Length	1.37 in [34.8 mm]
Width/Dia.	1.5 in [38.1 mm]
Height	0.6 in [15.24 mm]
Weight	0.066 lbs [29.94 g]

Connector

Type	SMA Female
Inner Conductor Material and Plating	Beryllium Copper, Gold
Outer Conductor Material and Plating	Brass, Gold
Body Material and Plating	Brass, Gold

Compliance Certifications (visit www.Pasternack.com for current document)

RoHS Compliant

Plotted and Other Data

Notes:

- Values at +25 °C, sea level
- Peak Power is 5µs Pulse width with a 3% Duty Cycle

Click the following link (or enter part number in "SEARCH" on website) to obtain additional part information including price, inventory and certifications: [Medium Power 50 Watts RF Load Up To 3 GHz With SMA Female Input Square Body Nickel Plated Brass PE6232](#)

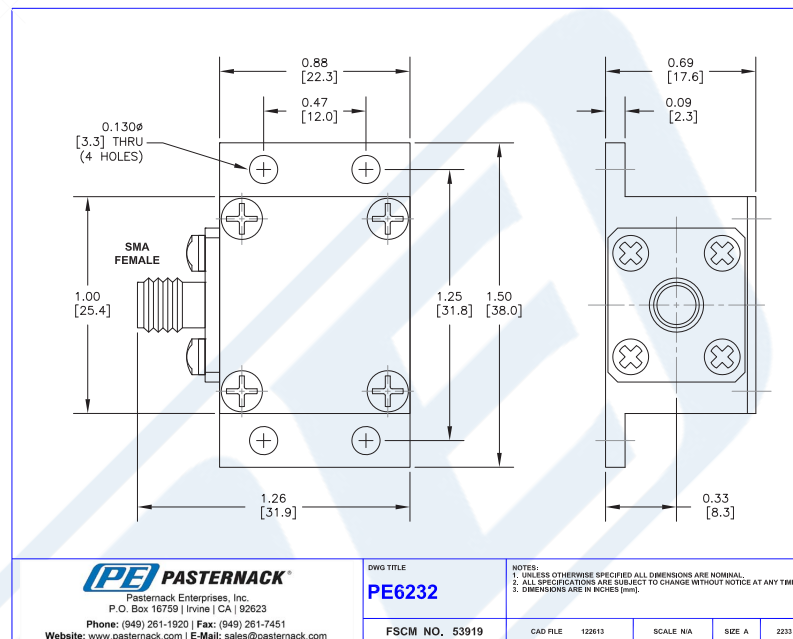


Medium Power 50 Watts RF Load Up To 3 GHz With SMA Female Input Square Body Nickel Plated Brass

TECHNICAL DATA SHEET

PE6232

Outline Drawing



Medium Power 50 Watts RF Load Up To 3 GHz With SMA Female Input Square Body Nickel Plated Brass from Pasternack Enterprises has same day shipment for domestic and International orders. Our RF, microwave and millimeter wave products maintain a 99% availability and are part of the broadest selection in the industry.

Click the following link (or enter part number in "SEARCH" on website) to obtain additional part information including price, inventory and certifications: [Medium Power 50 Watts RF Load Up To 3 GHz With SMA Female Input Square Body Nickel Plated Brass PE6232](http://www.pasternack.com/50-watts-sma-female-rf-load-up-to-3-ghz-pe6232-p.aspx)

URL: <http://www.pasternack.com/50-watts-sma-female-rf-load-up-to-3-ghz-pe6232-p.aspx>

The information contained in this document is accurate to the best of our knowledge and representative of the part described herein. It may be necessary to make modifications to the part and/or the documentation of the part, in order to implement improvements. Pasternack reserves the right to make such changes as required. Unless otherwise stated, all specifications are nominal. Pasternack does not make any representation or warranty regarding the suitability of the part described herein for any particular purpose, and Pasternack does not assume any liability arising out of the use of any part or documentation.