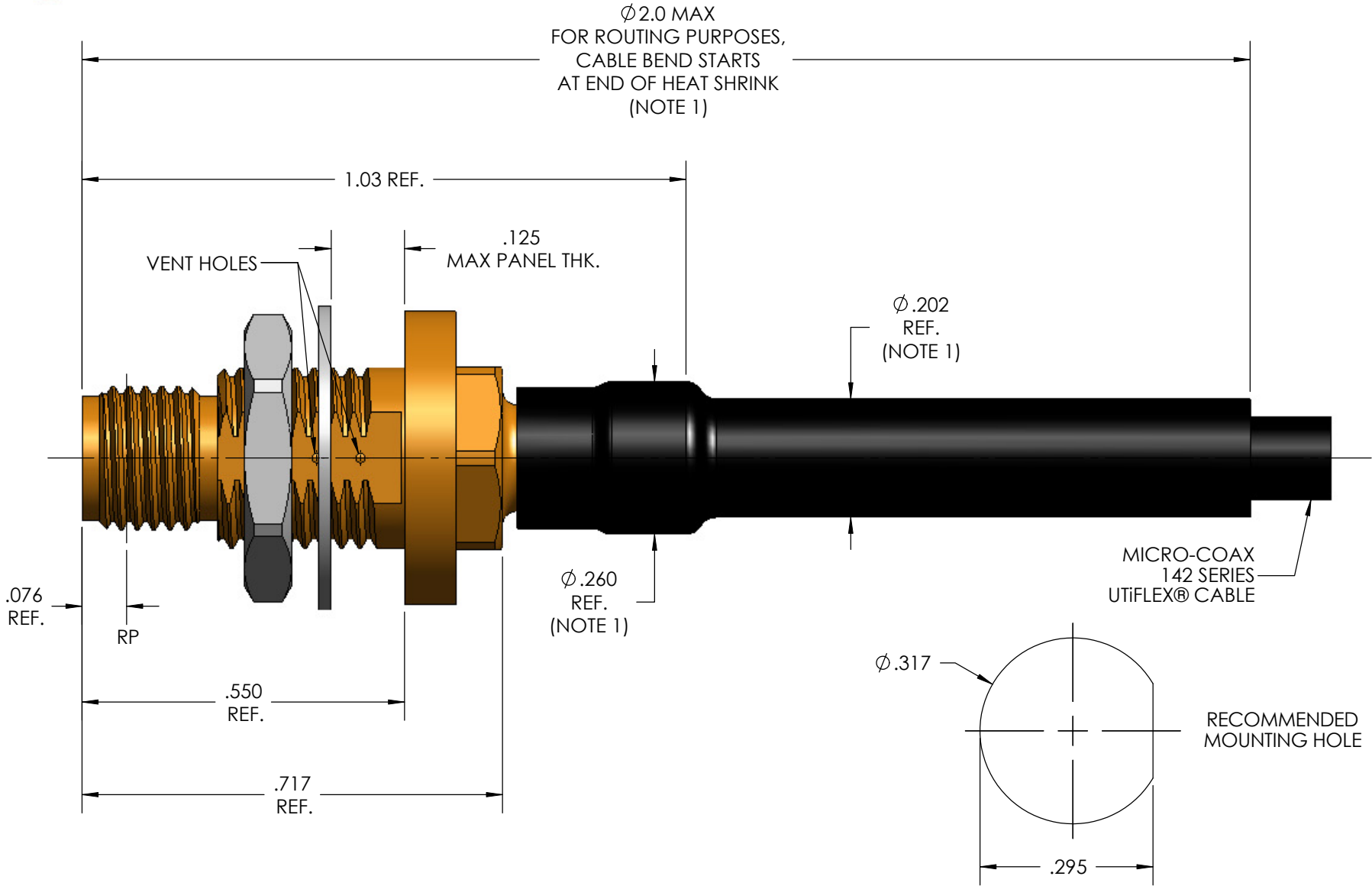
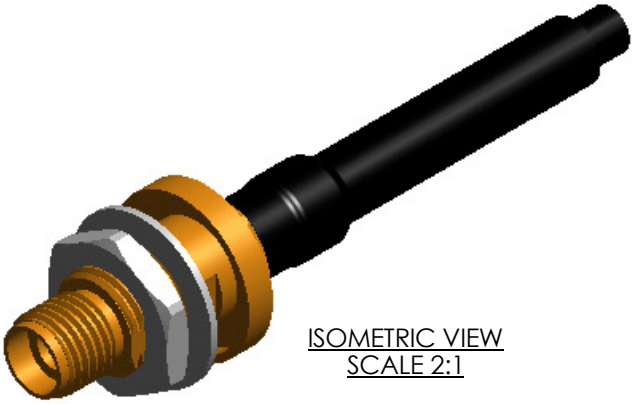


MECHANICAL CHARACTERISTICS	
INTERFACE	MIL-STD-348, FIGURE 323.2
IN ACCORDANCE WITH THE INTENT OF SLANT SHEET	IEEE P287 REF.
RECOMMENDED MATING TORQUE	9 IN-LBS. NOM.
RECOMMENDED JAM NUT TORQUE	12-15 IN-LBS. NOM.
CENTER CONTACT INSERTION (INTERFACE)	2 LBS. MIN.
CENTER CONTACT WITHDRAWAL (INTERFACE)	1 Oz. MIN.
FORCE TO ENGAGE	2 LBS. MAX.
FORCE TO DISENGAGE	2 LBS. MAX.
DURABILITY	500 CYCLES MIN.
AXIAL CONTACT RETENTION (FROM INTERFACE)	6 LBS. MAX.
AXIAL CONTACT RETENTION (FROM CABLE)	6 LBS. MAX.
CABLE RETENTION	20 LBS. MIN.
MASS	7.51 GRAMS NOM.
ELECTRICAL CHARACTERISTICS	
IMPEDANCE	50 Ohms NOM.
MAXIMUM FREQUENCY	40 GHz
VSWR DC - 26.5 GHz	1.16:1 MAX.
26.5 - 40GHz	1.20:1 MAX
INSERTION LOSS	0.04 √F (GHz)dB MAX.
DIELECTRIC WITHSTANDING VOLTAGE	950 Vrms MIN.
INSULATION RESISTANCE	5000 MegaOhms MIN.
RF LEAKAGE DC - 18 GHz	-90 dB MIN.
18 - 32 GHz	-80 dB MIN.
32 - 40 GHz	-70 dB MIN.
CORONA	240 Vrms MIN. @ 70,000 FEET
RF HIGH POTENTIAL	625 Vrms MIN.
CONTACT RESISTANCE (INNER)	4.0 MilliOhms MAX.
CONTACT RESISTANCE (OUTER)	2.0 MilliOhms MAX.
ENVIRONMENTAL CHARACTERISTICS	
OPERATING TEMPERATURE	-100 °C TO 150 °C
VIBRATION	MIL-STD-202, METHOD 204, CONDITION D
MECHANICAL SHOCK	MIL-STD-202, METHOD 213, CONDITION I
THERMAL SHOCK	MIL-STD-202, METHOD 107, CONDITION B
MOISTURE RESISTANCE	N/A
CORROSION	MIL-STD-202, METHOD 101, CONDITION B, 5%
MATERIALS AND FINISH	
CONTACT, BUSHING & BODY	BERYLLIUM COPPER, ASTM-B-196 GOLD PLATED PER MIL-DTL-45204, OVER NICKEL PLATE PER AMS-QQ-N-290
DIELECTRIC BEAD & DIELECTRIC STOP	POLYETHERIMIDE THERMOPLASTIC, PER ASTM-D-5205
WASHER	STEEL, CORROSION RESISTANT, PER ASTM-A240 UNS NO. S30400, PASSIVATED PER ASTM-A-967
LOCK NUT	STEEL, CORROSION RESISTANT, PER ASTM-A-276, UNS NO. S31603
APPLICATION	
CABLE(S)	142 SERIES CABLE
INSTALLATION	PER CONFIGURATOR

THIS DRAWING IS PROPRIETARY AND CONFIDENTIAL.



SPECIFICATION DRAWING

NOTE:

1. MARKER LOCATION ON THIS DRAWING IS FOR REFERENCE ONLY AND IS SUBJECT TO CHANGE WITHOUT NOTICE.
2. ALL SPECIFICATIONS LISTED ON THIS DRAWING WILL ALSO APPLY TO CONNECTOR 904140-EM (EQUIPMENT MODEL).

THIS SPECIFICATION IS THE PROPERTY OF MICRO-COAX, INC. AND MAY NOT BE USED OR COPIED WITHOUT THE EXPRESS WRITTEN PERMISSION OF MICRO-COAX, INC.		INITIALS		DATE		<div>MICRO-COAX[®]</div> <div>Leading the way in transmission line solutions.</div> <div>Copyright Micro-Coax, Inc.</div>					
		DWN.	JMK	9/2/04							
		CHKD.	CCF	5/18/11							
		APPVD.									
TOLERANCES UNLESS OTHERWISE SPECIFIED		TITLE		2.92 mm BULKHEAD JACK, VENT HOLES, 142 SERIES CABLE, SPACE GRADE							
.XX	± .02	ALL DIMENSIONS IN INCHES UNLESS OTHERWISE SPECIFIED. SCREW THDS. TO BE IN ACCORD WITH ANSI B1.1-1989.		FSCM NO.	SIZE	SCALE	SHEET NO.	DRAWING NO.	REV		
.XXX	± .005										
.XXXX	± .0010										
ANGLES	± 2°										
				64639	B	4:1	1 OF 1	SD904140	D		