

# SMA/M HARBOUR LL335 18 GHZ CONNECTOR

SC7216

## SPECIFICATIONS

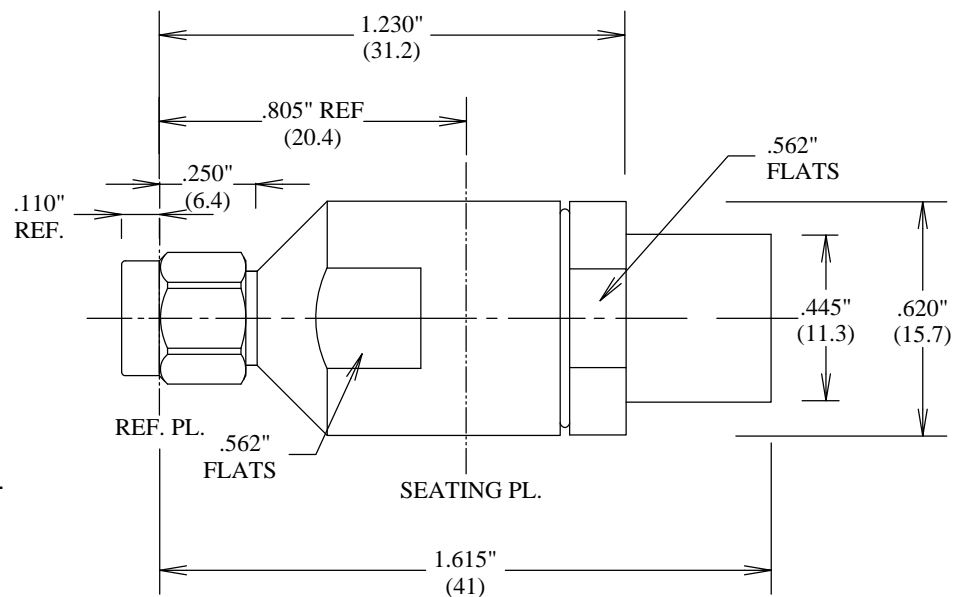
### ELECTRICAL

FREQUENCY: 0-18 GHZ  
 IMPEDANCE: 50 OHMS

### MECHANICAL

MATERIALS BODY: PASSIVATED STAINLESS STEEL  
 MATERIALS CONTACTS: BeCu  
 CONTACT PLATING: Au PER MIL-G-45204  
 DIELECTRIC: PFTE  
 SOLDER FERRULE: BRASS PER ASTM-B16  
 LOCK RING: BeCu PER ASTM-B197  
 TEMPERATURE RANGE: -55° to +120°C  
 ROHS COMPLIANT

INTERFACE: MIL-STD-348



**FAIRVIEW MICROWAVE INC.**

ALLEN, TX 75013 WWW.FAIRVIEWMICROWAVE.COM

TITLE

**SMA/M HARBOUR LL335  
 18 GHZ CONNECTOR**

SIZE	CAGE CODE	DWG NO	REV
<b>A</b>	3FKR5	SC7216	--

ALL DIMENSIONS IN inches(MM) Typical

SCALE	SHEET
-------	-------