

SPECIFICATIONS

PRODUCTION
RELEASE

NOTE:
THIS DRAWING INCORPORATES
THIRD ANGLE PROJECTION.
INTERPRET IAW ANSI Y14.5-1992

REVISIONS

REV	DESCRIPTION	DATE	APPROVED
B	ADDED STORAGE TEMP - POWER LEVELS	3/26/10	TAK

1. MATERIAL:

HOUSING: STAINLESS STEEL IAW ASTM-A484 & ASTM-A582, ALLOY 303, COND A
CONTACT: BERYLLIUM COPPER
DIELECTRIC - HIGH TEMPERATURE PLASTIC BEAD

2. FINISH:

HOUSING - PASSIVATED STAINLESS STEEL
CONDUCTOR - GOLD PLATED IAW MIL-PRF-39012

3. ELECTRICALS:

FREQUENCY RANGE _____ DC - 50 GHz

STANDARD dB VALUES _____ 3, 6, 10, 20 & 30 dB

ATTENUATION ACCURACY	DC - 26.5 GHz	26.5 - 40 GHz	40 - 50 GHz
3, 6 & 10 dB	±0.5 dB	±1.0 dB	±1.5 dB
20 & 30 dB	±0.75 dB	±1.25 dB	±2.0 dB

VSWR (MAX)	DC-26.5 GHz	26.5 - 40 GHz	40 - 50 GHz
	<1.35	<1.60	<1.75

POWER (AVG. MAX.) _____ @25°C SEE TABLE
DERATES LINEARLY TO 10% AT +100°C

IMPEDANCE _____ 50 OHMS

OPERATING/STORAGE TEMPERATURE RANGE -55 TO +100°C

PART ORDERING INFORMATION

8582 - 6X50 - DB - OTHER

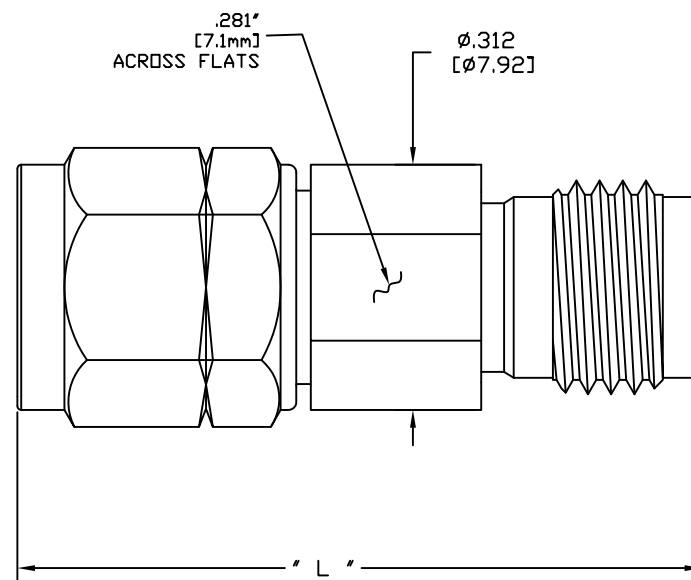
DB: SIGNIFIES NOMINAL DB VALUE OF UNIT

03 = 3 DB	06 = 6 DB	30 = 30DB
10 = 10 DB	20 = 20 DB	

8582-6X50-DB	POWER LEVEL
X = 0	0.5 WATT
X = 1	1 WATT

DB VALUE	LENGTH "L"
0-20	.871±.030
30	.911±.030

FOR "-OTHER" DESIGNATIONS CONTACT FACTORY



DRAWING PRACTICES PER ANSI-Y14.5 MIL-STD-883 & 1000	
UNLESS OTHERWISE SPECIFIED DIMENSIONS ARE IN INCHES AND APPLY BEFORE/AFTER PROCESSING	TOLERANCES ON DECIMALS INCH MM
SURFACE ROUGHNESS 63	.X" .05" [1.3] .XX" .03" [.79] .XXX" .015 [.38] ANGLES XXX°
FINISH SEE NOTES	UNLESS OTHERWISE NOTED DIAS CONCENTRIC <.003 T.I.R.
MATERIAL SEE NOTES	

DRAWN D. SAUNDERS	DATE 01/01/2007
CHECKED	DATE
ENG. D. SAUNDERS	DATE 01/01/2007
THESE DRAWINGS AND SPECIFICATIONS ARE THE PROPERTY OF XMA CORP. OR OMNI SPECTRA AND SHALL NOT BE REPRODUCED, COPIED NOR USED - IN WHOLE OR IN PART - AS A BASIS FOR THE MANUFACTURE OR SALE OF OTHER ITEMS WITHOUT THE EXPRESS WRITTEN PERMISSION OF XMA CORP.	

www.XMACorp.com Sales@XMACorp.com	
XMA Omni Spectra® Phone: 603-222-2256 Fax: 603-222-2259 150 Dow Street, Manchester, NH 03101	
TITLE 50 GHz, 2.4mm M-F ATTENUATOR 1 WATT INPUT POWER	
SIZE C	CAGE CODE 3HT76
SCALE 8:1	DWG NO. 8582-6X50-DB
PLATING AREA SQUARE INCHES	XXX SHEET 1 OF 1