

DC BLOCKS

2.9mm, 10 MHz - 40 GHz, 200 Volts

SPECIFICATIONS:

Models: 8143A and 8146A

RoHS
Compliant

AEROFLEX
A passion for performance.

Electrical:

Frequency Range _____ 10 MHz - 40 GHz
VSWR _____ 1.45:1 Max.
Impedance _____ 50 Ohms
Insertion Loss _____ 0.75 dB Max.
Voltage Rating _____ 200 Volts Max.
Operating Temp. Range _____ -65°C to +125°C

Mechanical:

Connectors _____ Passivated Stainless Steel
Mates both Mechanically and Electrically with
SMA, K* and 3.5mm Series Connectors
_____ Gold Plated Beryllium Copper

Housings:

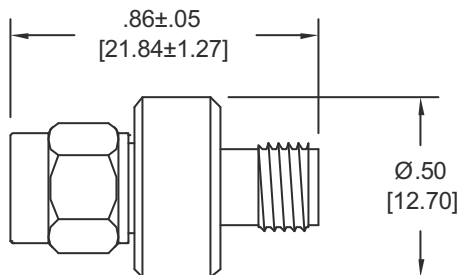
Inner Only Blocks _____ Passivated Stainless Steel
Inner/Outer Blocks _____ High Temperature Plastic

* K is a Trademark of Anritsu Corp.

Model Number: **8143A**

2.9mm Male to Female; Inner/Outer

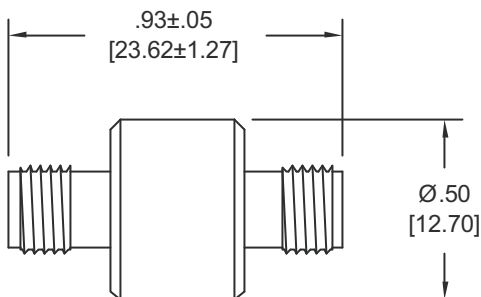
Weight _____ 5.5 Grams Max.



Model Number: **8146A**

2.9mm Female to Female; Inner/Outer

Weight _____ 6.2 Grams Max.



Note: Dimensions in Brackets are Expressed in Millimeters and are for Reference Only.
Design, specifications are subject to change without notice. Contact factory for technical specifications before purchasing and/or use.

8143A: REV -

AEROFLEX
INMET

Aeroflex / Inmet, Inc. • 300 Dino Drive, Ann Arbor, MI 48103 • U.S.A.
888-244-6638 or 734-426-5553 • FAX: 734-426-5557
www.aeroflex.com/inmet • inmet@aeroflex.com