

COMPUTER GENERATED DRAWING
MANUAL CHANGES NOT AUTHORIZED

REVISIONS

REV.	DESCRIPTION	DATE	RELEASED BY
NC	INITIAL RELEASE	5-29-94	KN
A	REV PER ECN: 5482	5-24-96	BM
B	REV PER ECN: 6822, 9830	6-09-05	R.T.S

SPECIFICATIONS

FREQUENCY: 0.5 TO 8.0 GHz

VSWR: 2.0:1 MAX

J1 - ON ONLY
J2 - ON OR OFF

INSERTION LOSS:
0.5 - 4.0 GHz: 1.5 dB MAX
4.0 - 8.0 GHz: 1.8 dB MAX

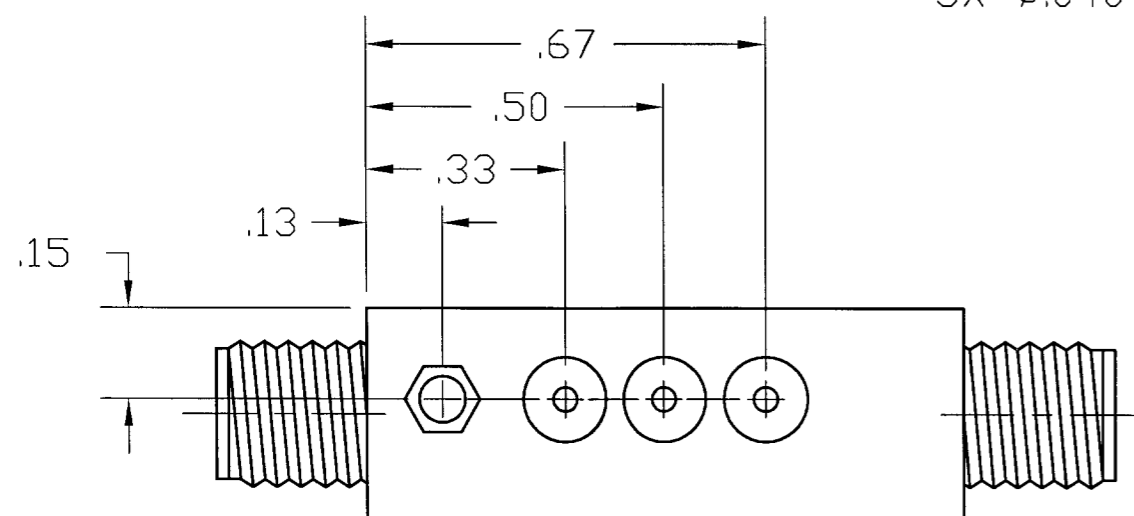
ISOLATION: 65 dB MIN

SWITCHING SPEED: 25 nSEC MAX
(50% TTL to 10/90% RF)

TEMPERATURE:
OPERATING: -55° TO +100°C
STORAGE: -65° TO +125°C

POWER SUPPLY: +5V @ 50 mA MAX
-15V @ 75 mA MAX

CONTROL AT C1: TTL LOW - INSERTION LOSS
TTL HIGH - ISOLATION



603-0041-001	SFS0580-101
LIST OF MAT'L	USED ON
APPLICATION	DO NOT SCALE DRAWING

ITEM	QTY REQ'D	FSCM NO.	PART OR IDENTIFICATION NO.	NOMENCLATURE OR DESCRIPTION	MATERIAL SPECIFICATION
PARTS LIST					
UNLESS OTHERWISE SPECIFIED DIMENSIONS ARE IN INCHES TOLERANCES ARE: FRACTIONS DECIMALS ANGLES * .001 .02 * * .001 .010 *				CONTRACT NO.	
MATERIAL:				APPROVALS	DATE
FINISH:				DRAWN: PJ CRAWFORD	5-25-94
				CHECKED:	
				DESIGN ENG. K. NENDZA	5-29-94
				MAT. & PROCESSES	
				Q.A.	
				SIZE B	FSCM NO. 1CY63
				BRDR SCALE	DWG NO. 605-0182-001
					REV B
					SHEET OF

SMT SIERRA MICROWAVE TECHNOLOGY

TITLE:
OUTLINE FOR SFS0580-101