

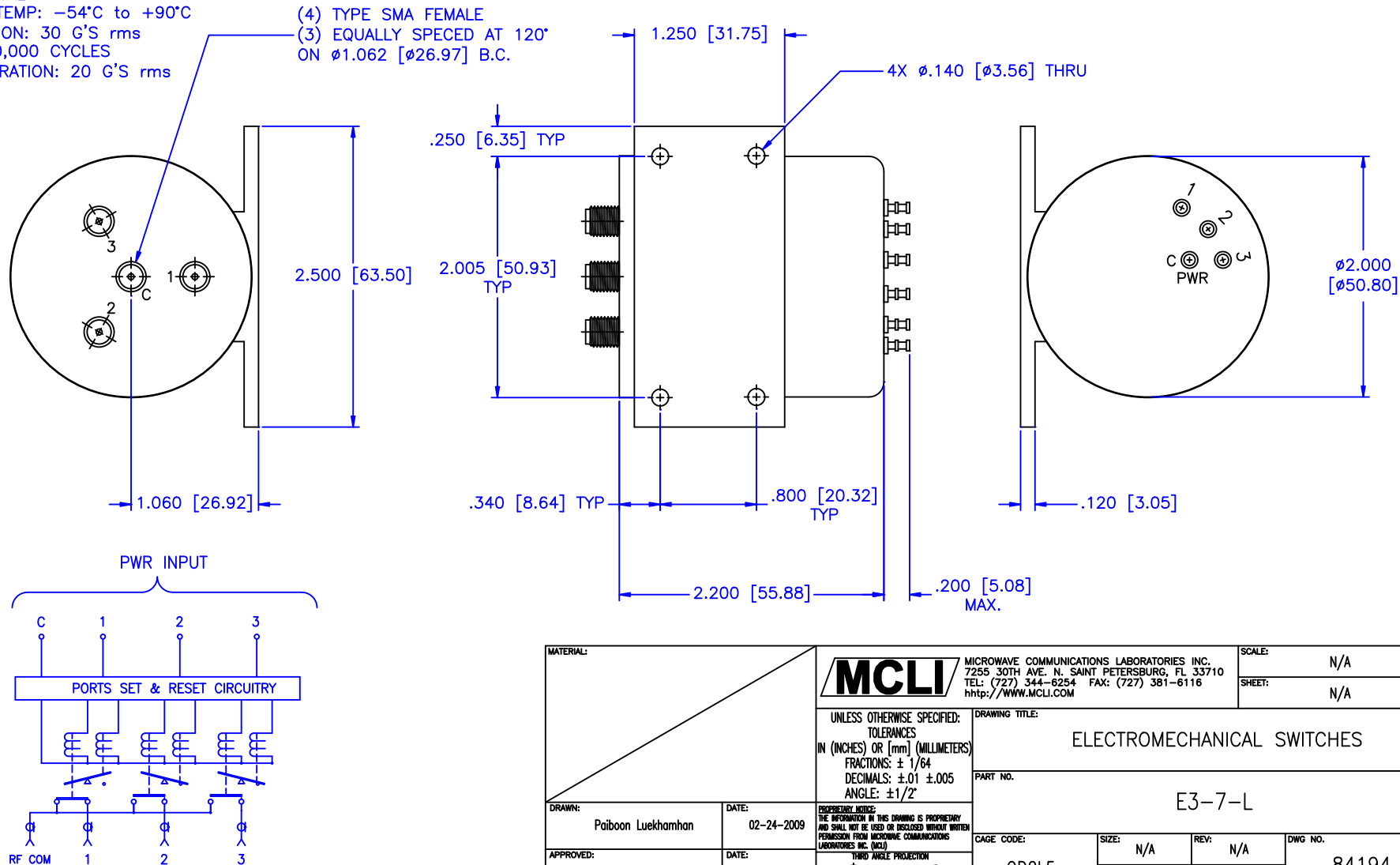
MECHANICAL  
CONTACT: BREAK BEFORE MAKE  
ACTUATOR: LATCHING  
SWITCHING SPEED: 20 mSEC MAX

ELECTRICAL  
ACTUATOR VOLTAGE: 28.0 Vdc (22.0–32.0 Vdc)  
ACTUATOR CURRENT: 0.300 A MAX @ 28.0 Vdc  
POWER HANDLING: 200 WCW @ 1.0 GHz  
IMPEDANCE: 50 OHMS

ENVIRONMENTAL  
OPERATING TEMP: -54°C to +90°C  
SINE VIBRATION: 30 G'S rms  
LIFE : 1,000,000 CYCLES  
RANDOM VIBRATION: 20 G'S rms

SPECIFICATION:

FREQUENCY RANGE (GHz):	DC–2.0	2.0–4.0	4.0–8.0	8.0–12.4	12.4–18.0
VSWR (Max.):	1.20:1	1.25:1	1.30:1	1.40:1	1.50:1
INSERTION LOSS (dB):	0.20	0.25	0.30	0.40	0.50
ISOLATION (dB):	90	80	80	70	60



MATERIAL:

**MCLI**

MICROWAVE COMMUNICATIONS LABORATORIES INC.  
7255 30TH AVE. N. SAINT PETERSBURG, FL 33710  
TEL: (727) 344-6254 FAX: (727) 381-6116  
http://WWW.MCLI.COM

SCALE: N/A  
SHEET: N/A

UNLESS OTHERWISE SPECIFIED:  
TOLERANCES  
IN (INCHES) OR (mm) (MILLIMETERS)  
FRACTIONS:  $\pm 1/64$   
DECIMALS:  $\pm .01$   $\pm .005$   
ANGLE:  $\pm 1/2^\circ$

DRAWING TITLE:

ELECTROMECHANICAL SWITCHES

PART NO.

E3-7-L

DRAWN:

Paiboon Luekhamhan

DATE:

02-24-2009

APPROVED:

T. Nguyen

DATE:

02-24-2009

PROPRIETARY NOTICE:  
THE INFORMATION IN THIS DRAWING IS PROPRIETARY  
AND SHALL NOT BE USED OR DISCLOSED WITHOUT WRITTEN  
PERMISSION FROM MICROWAVE COMMUNICATIONS  
LABORATORIES INC. (MCLI)



CAGE CODE:

OD2L5

SIZE:

N/A

REV:

N/A

DWG NO.

84194

DO NOT SCALE THE DRAWING