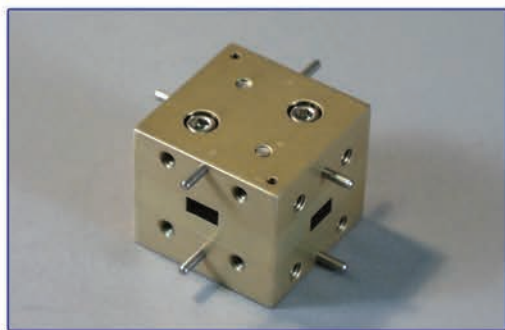


564 Series Cross Guide Directional Couplers

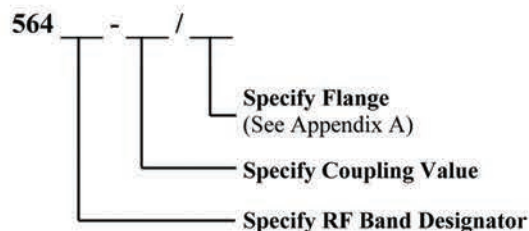
MI-WAVE
Millimeter Wave Products Inc.



Features

- Low VSWR
- Four-Port Device
- Rugged Construction
- Broadband Operation

Ordering Information



Description

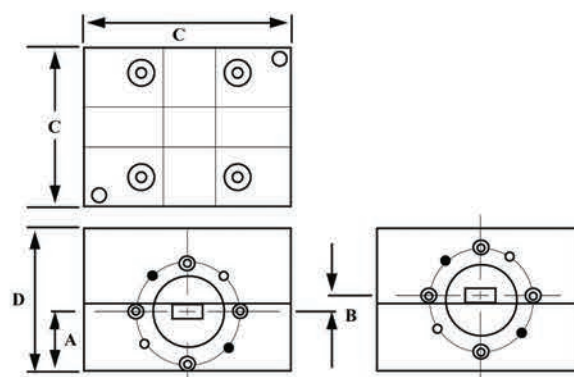
Mi-Wave's 564 series cross guide coupler consists of two waveguides at right angles to each other, joined by small coupling slots whose size, location, and orientation determine the coupling and directivity of the unit. All ports are available for sampling or injecting energy and are clearly marked to indicate the coupling direction.

Applications

The 564 series cross guide directional couplers provide an efficient means for sampling power or injecting a signal into a waveguide transmission line.

Dimensional Specifications

Model No	A		B		C		D	
	in	mm	in	mm	in	mm	in	mm
564K	.568	14.4	0.18	4.6	1.62	41.1	1.31	33.3
564A	.580	14.7	0.15	3.8	1.62	41.1	1.31	33.3
564B	.594	15.1	0.12	3.0	1.62	41.1	1.31	33.3
564U	.603	15.3	0.10	2.5	1.62	41.1	1.31	33.3
564V	.588	14.9	0.08	2.01	1.25	31.8	1.25	31.8
564E	.595	15.1	0.07	1.8	1.25	31.8	1.25	31.8
564W	.600	15.2	0.05	1.3	1.25	31.8	1.25	31.8
564F	.600	15.2	0.05	1.3	1.25	31.8	1.25	31.8



Technical Specifications (typical)

Model Number	564K	564A	564B	564U	564V	564E	564W	564F
Frequency Band (GHz)	18.0-26.5	26.5-40.0	33.0-50.0	40.0-60.0	50.0-75.0	60.0-90.0	75.0-110.0	90.0-140.0
Standard Coupling Values (dB) Nom.	16, 20, 30, 40, 50							
Directivity (dB) Typical	15	15	15	15	10	10	10	10
VSWR Max.	1.15	1.15	1.15	1.15	1.20	1.20	1.20	1.20
Weight (oz)	3.0	3.0	3.0	3.0	9.0	8.0	8.0	7.0

1. Any coupling values are available upon request.

2. Nominal ± 2.0 dB coupling variation over the waveguide band when set for coupling value at the band center.