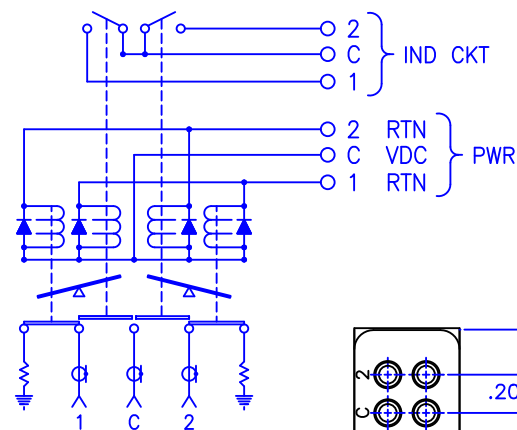


REVISIONS				
ZONE	REV	DESCRIPTION	Date	APPROVED



SOLDER TERMINAL

.200 [5.08]
TYP

.550 [13.97]

.200 [5.08] TYP

2.053 [52.13]

.205 [5.20] TYP

2.280 [57.91]

3X TYPE SMA FEMALE
PER MIL-C-39012

3X .440 [11.18]

.223 [5.65] TYP

.440 [11.18] TYP

.880 [22.35]
TYP

4X Ø.120 [Ø3.05] THRU

.090 [2.29] TYP

EXTERNAL TERMINATION

SPECIFICATION:

FREQUENCY RANGE (GHz):	DC-2.0	2.0-4.0
VSWR (Max.):	1.20:1	1.25:1
INSERTION LOSS (dB):	0.20	0.25
ISOLATION (dB):	90	80

MECHANICAL


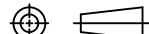
CONTACT: BREAK BEFORE MAKE
ACTUATOR: LATCHING
SWITCHING SPEED: 20 mSEC MAX

ELECTRICAL

ACTUATOR VOLTAGE: 28.0±3.0 Vdc
ACTUATOR CURRENT: 0.110 A MAX @ 28.0 Vdc
POWER HANDLING: 200W CW @ 1.0 GHz
IMPEDANCE: 50 Ohms

ENVIRONMENTAL

OPERATING TEMP: -54° C TO +90° C
SINE VIBRATION: 30 G'S rms
LIFE: 1,000,000 CYCLES
RANDOM VIBRATION: 20 G'S rms

MATERIAL:		 MICROWAVE COMMUNICATIONS LABORATORIES INC. 7255 30TH AVE. N. SAINT PETERSBURG, FL 33710 TEL: (727) 344-6254 FAX: (727) 381-6116 http://WWW.MCLI.COM		SCALE:	
				N/A	
UNLESS OTHERWISE SPECIFIED: TOLERANCES IN (INCHES) OR (mm) (MILLIMETERS) FRACTIONS: ± 1/64 DECIMALS: ±.01 ±.005 ANGLE: ±1/2°		DRAWING TITLE:			
		ELECTROMECHANICAL SWITCHES			
DRAWN: Paiboon Luekhamhan DATE: 03-11-2009 APPROVED: T. Nguyen DATE: 03-11-2009		PART NO.			
		K45-3-LIS/28P			
PROPRIETARY NOTICE: THE INFORMATION IN THIS DRAWING IS PROPRIETARY AND SHALL NOT BE USED OR DISCLOSED WITHOUT WRITTEN PERMISSION FROM MICROWAVE COMMUNICATIONS LABORATORIES INC. (MCLI)		CAGE CODE:		SIZE:	REV:
		0D2L5		A	N/A
THIRD ANGLE PROJECTION 		DWG NO.			
		84268			
		DO NOT SCALE THE DRAWING			