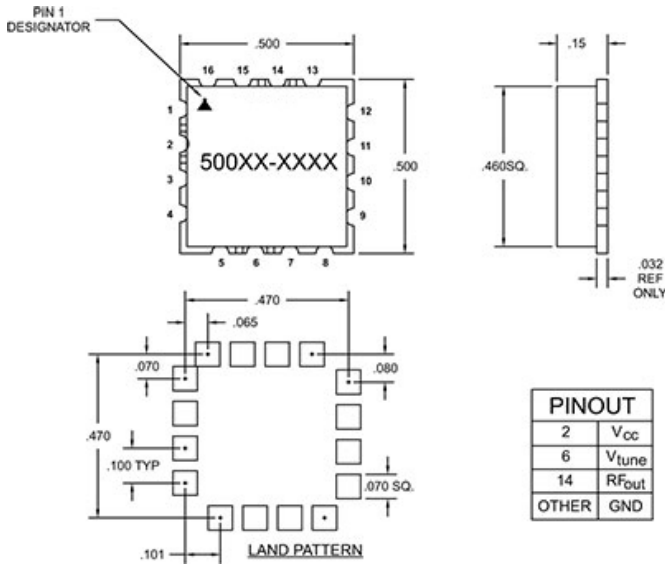


SPEC SHEET

MW500-1681

3300 MHz to 4300 MHz

VOLTAGE CONTROLLED OSCILLATORS



Specifications

Frequency	3300 MHz to 4300 MHz
Tuning Voltage	0.5/10.5 V
Power Output	3 +/- 3 dBm
Phase Noise	10 kHz Offset -78 (typ) dBc/Hz 100 kHz Offset -101 (typ) dBc/Hz
Frequency Pushing	10 MHz/V
Frequency Pulling	10 MHz
Harmonic Suppression	-15 (MAX)

Operating Specifications

Supply Voltage	5 V _{cc}
Supply Current	30 mA
Load Impedance	50
Operating Temperature	-40 to 80 °C

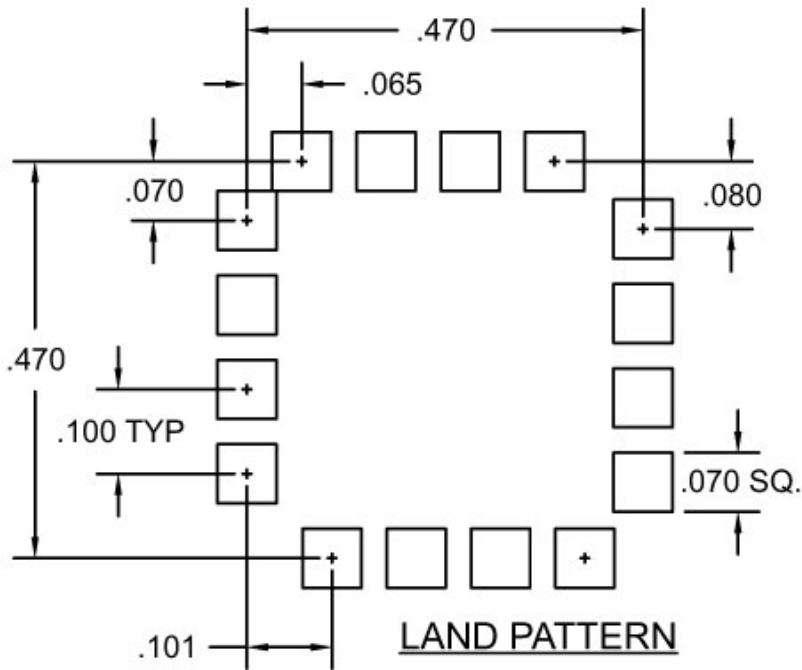
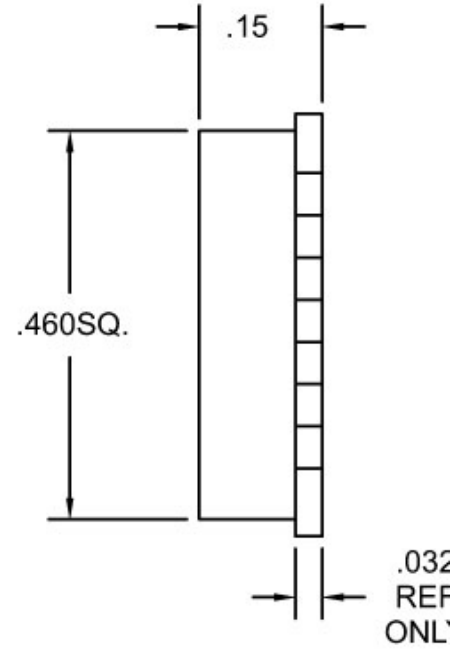
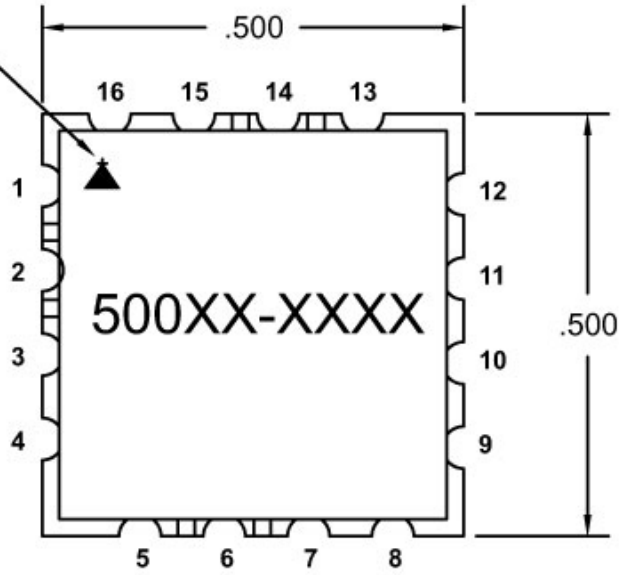
Notes

Kv to be between 100-180Mhz per volt within the tuning band of .5-10.5 volts.



MERCURY COMMERCIAL ELECTRONICS

PIN 1
DESIGNATOR



PINOUT	
2	V _{cc}
6	V _{tune}
14	R _{Fout}
OTHER	GND