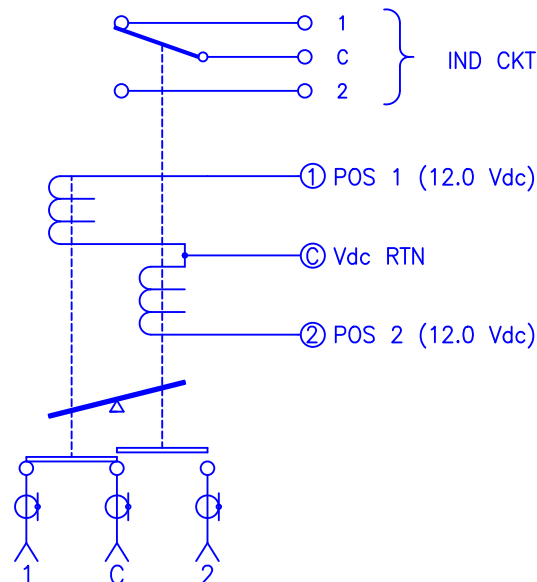
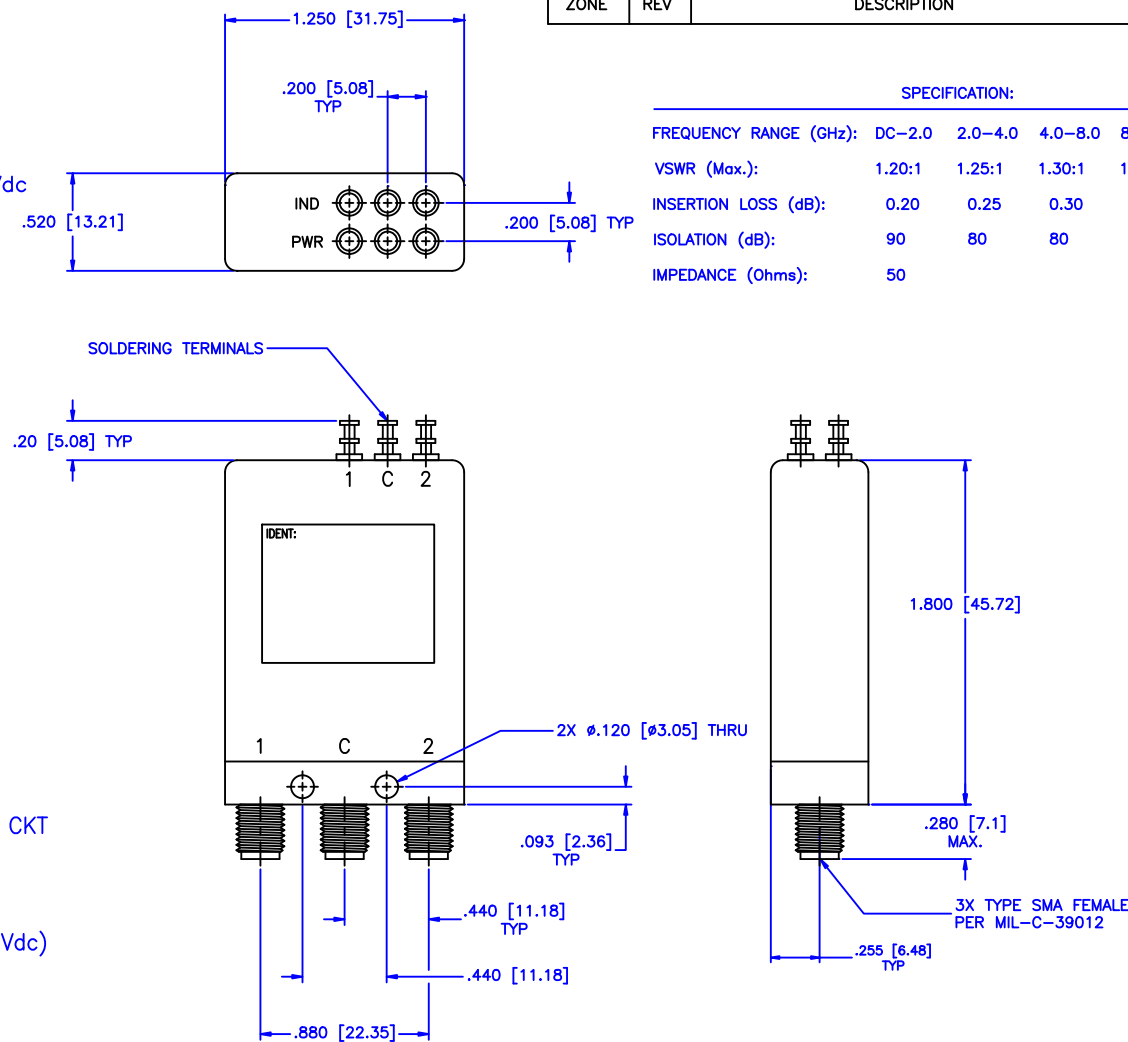




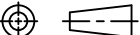
CONTACT: BREAK BEFORE MAKE  
ACTUATOR: LATCHING  
SWITCHING SPEED: 20 mSEC MAX

ACTUATOR VOLTAGE: 12.0 Vdc  
ACTUATOR CURRENT: 0.100 A MAX @ 28.0 Vdc  
POWER HANDLING: 200W CW @ 1.0 GHz

OPERATING TEMP: -54° C TO +90° C  
SINE VIBRATION: 30 G'S rms  
LIFE: 1,000,000 CYCLES  
RANDOM VIBRATION: 20 G'S rms

SPECIFICATION:						
FREQUENCY RANGE (GHz):	DC–2.0	2.0–4.0	4.0–8.0	8.0–12.4	12.4–18.0	18.0–26.5
VSWR (Max.):	1.20:1	1.25:1	1.30:1	1.40:1	1.50:1	1.50:1
INSERTION LOSS (dB):	0.20	0.25	0.30	0.40	0.50	0.50
ISOLATION (dB):	90	80	80	70	60	60
IMPEDANCE (Ohms):	50					



MATERIAL:		 MICROWAVE COMMUNICATIONS LABORATORIES INC. 7255 30TH AVE. N. SAINT PETERSBURG, FL 33710 TEL: (727) 344-6254 FAX: (727) 381-6116 http://WWW.MCLI.COM		SCALE: N/A
		UNLESS OTHERWISE SPECIFIED: TOLERANCES IN (INCHES) OR (mm) (MILLIMETERS) FRACTIONS: $\pm 1/64$ DECIMALS: $\pm 0.01 \pm 0.005$ ANGLE: $\pm 1/2^\circ$		SHEET: N/A
		DRAWING TITLE: ELECTROMECHANICAL SWITCHES		
DRAWN: Paiboon Luekhamhan		PART NO. K2-8-LI/12		
DATE: 03-04-2001		PROPRIETARY NOTICE: THE INFORMATION IN THIS DRAWING IS PROPRIETARY AND SHALL NOT BE USED OR REPRODUCED WITHOUT WRITTEN PERMISSION FROM MICROWAVE COMMUNICATIONS LABORATORIES INC. (MCLI)		
APPROVED: T. Nguyen		THIRD ANGLE PROJECTION 		
		CAGE CODE: OD2L5	SIZE: A REV: A DO NOT SCALE THE DRAWING	DWG NO. 82178