



Agilent M9155/6/7C and M9155/6/7CH40 DC to 26.5/40 GHz PXI Hybrid Switch Modules

DISCOVER the Alternatives...

Industries and Applications

- Automatic Test Equipment (ATE)
- RF communications
- Engineering verification
- RF parametric measurements
- Mid and high density switching systems

Product Description

M9155/6/7C is a series of PXI hybrid switch modules based on the PXI Hybrid platform. Operating from DC to 26.5/40 GHz, these modules come with guaranteed 0.03 dB insertion loss repeatability throughout the operating life.

Models

M9155C	Dual SPDT Switch, DC to 26.5 GHz, Unterminated
M9156C	Dual Transfer Switch, DC to 26.5 GHz
M9157C	Single SP6T Switch, DC to 26.5 GHz, Terminated
M9155CH40	Dual SPDT Switch, DC to 40 GHz, Unterminated
M9156CH40	Dual Transfer Switch, DC to 40 GHz
M9157CH40	Single SP6T Switch, DC to 40 GHz, Terminated

Main Features and Benefits

Product features	Your benefit
A readily scaled integrated switching solution to satisfy your unique application platform needs	Peace of mind in switch technology from Agilent who has a proven track record for providing versatile, quality RF and microwave switches
Guaranteed 0.03 dB insertion loss repeatability throughout the operating life of up to 10 million cycles	Reduce downtime for recalibration, improve testing efficiency and hence maximize throughput
Unmatched isolation of 60 dB at 26.5 GHz	Maximize measurement accuracy and system flexibility
Soft front panel is available for each switch module	The embedded graphical user interface ease the troubleshooting of your PXI systems

Connector compatibility: PXI-H, PXI-1, cPCI



... Agilent **MODULAR** Products

Specifications

Hardware		
Size	M9155C/CH40 M9156C/CH40 M9157C/CH40	1 slot wide 2 slots wide 3 slots wide
Frequency	DC to 26.5/40 GHz	
Insertion loss*	0.42 dB at 8 GHz 0.57 dB at 18 GHz 0.70 dB at 26.5 GHz 1.1 dB at 40 GHz	
Insertion loss repeatability	< 0.03 dB	
Guaranteed operating life	5 million cycles for M9155C and M9155/6/7CH40 2 million cycles for M9155/6/7C	
Typical operating life	10 million cycles for M9155C and M9155/6/7CH40 5 million cycles for M9155/6/7C	
Isolation* (M9157CH40)	100 dB at 12 GHz 70 dB at 20 GHz 65 dB at 40 GHz	
VSWR*	1.35 at 8 GHz 1.45 at 18 GHz 1.70 at 26.5 GHz 1.95 at 40 GHz	
Impedance	50 Ω	
RF connector	3.5 mm (f) for M9155C SMA (f) for M9156/7C 2.92 mm (f) for M9155/6/7CH40	

Note: *Refer to data sheet 5990-6269EN for detailed technical specifications.

Anticipate — Accelerate — Achieve



Agilent Technologies

Software

Software development platform	Visual Studio®, C, C++, C#, Visual Basic®, LabVIEW, LabWindows/CVI, MATLAB®, VEE
Supported operating systems	Microsoft Windows® XP SP3, (32-bit), Windows® Vista, (32-bit and 64-bit) Windows® 7 (32-bit and 64-bit)
Included device drivers	IVI-COM, IVI-C, LabVIEW, MATLAB®
Included GUI	Soft front panel
Application code examples	C, C++, C#, Visual Basic®, VEE, MATLAB®

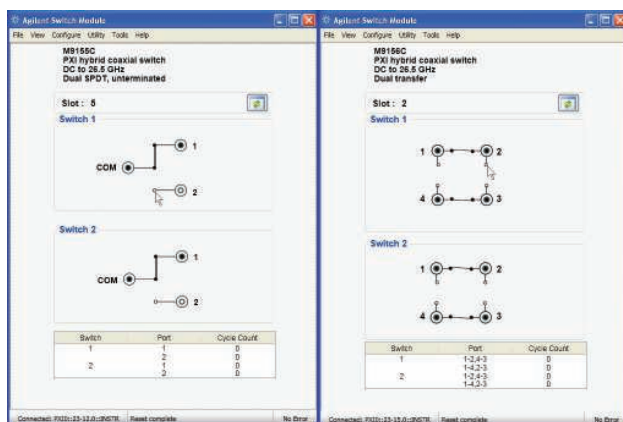
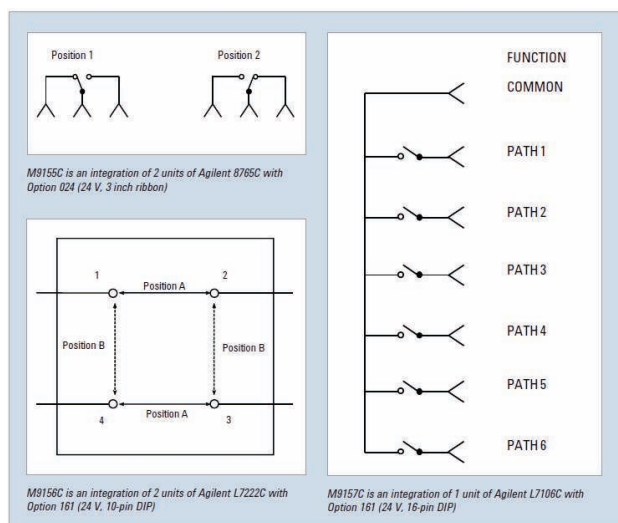


Figure 1. Soft Front Panel for M9155/6/7C.



PXI is a registered U.S. trademark of PXI Systems Alliance. Visual Studio, Visual C, C++, and C#, and Visual Basic are registered trademarks of Microsoft Corporation. Windows and MS Windows are U.S. registered trademarks of Microsoft Corporation. MATLAB is a U.S. registered trademark of The Math Works, Inc.

Ordering Information

Model	Description
✓ M9018A	PXIe Chassis, 18- slots, 3U, 8 GB/s
✓ M9155C	PXIh Coaxial Switch, DC-26.5 GHz, Dual SPDT, Underterminated
✓ M9156C	PXIh Coaxial Switch, DC to 26.5 GHz, Dual Transfer
✓ M9157C	PXIh Coaxial Switch, DC to 26.5 GHz, Single SP6T, Terminated
✓ M9155CH40	PXIh Coaxial Switch, DC to 40 GHz, Dual SPDT, Underterminated
✓ M9156CH40	PXIh Coaxial Switch, DC to 40 GHz, Dual Transfer
✓ M9157CH40	PXIh Coaxial Switch, DC to 40 GHz, Single SP6T Switch, Terminated
✓	<i>Recommended configuration</i>

Related products

M9392A	PXI Vector Signal Analyzer
M9302A	PXI Local Oscillator
M9351A	PXI Downconverter (50 MHz to 2.9 GHz)
M9360A	PXI Attenuator/Preselector
M9361A	PXI Downconverter (2.75 GHz to 26.5 GHz)

Advantage Services: Calibration and Warranty

Agilent Advantage Services is committed to your success throughout your equipment's lifetime.

R-51B-001-C 1 year Return-to-Agilent warranty

DISCOVER Agilent



www.agilent.com

www.agilent.com/find/modular

www.agilent.com/find/PXIswitch

USA: (800) 829-4444

For more information on Agilent Technologies' products, applications, or services, please contact your local Agilent office. The complete list is available at: www.agilent.com/find/contactus

Product specifications and descriptions in this document subject to change without notice.

© Agilent Technologies, Inc. 2013 Published in USA, January 30, 2013
5990-6170EN



Agilent Technologies