

DESCRIPTION

PMI MODEL P2T-500M18G-80-T-515-SFF-4W IS AN ABSORPTIVE, SINGLE POLE, TWO THROW PIN DIODE SWITCH THAT OPERATES OVER THE 0.5 GHZ TO 18 GHZ FREQUENCY RANGE. THIS MODEL INCORPORATES A TTL COMPATIBLE DRIVER FOR EASY SYSTEM INTEGRATION.

SPECIFICATIONS

- FREQUENCY RANGE: 0.5 TO 18 GHZ
- ISOLATION: 70 dB MIN
- INSERTION LOSS: 3.5 dB TYP
- VSWR IN / OUT: 2.0:1 MAX
- OPERATING INPUT POWER: 4 WATTS CW MAX
- RF SWITCHING SPEED: 200NSEC MAX
- DC VOLTAGE: +5 & -15VDC
- CONTROL SIGNAL: TTL LOGIC
SEE LOGIC TABLE
- CONNECTORS IN/OUT: SMA FEMALE CONNECTORS
- CONTROL CONNECTORS: SOLDER PINS
- FINISH: EPOXY PAINT BLUE
- SIZE: 1.0" X 1.0" X 0.4"

| LOGIC TABLE | | |
|-------------|------|-------------|
| CTL1 | CTL2 | FUNCTION |
| 0 | 0 | *J2 & J3 ON |
| 0 | 1 | J1 - J2 |
| 1 | 0 | J1 - J3 |
| 1 | 1 | ALL OFF |

*NOT TO SPECIFIED VALUES

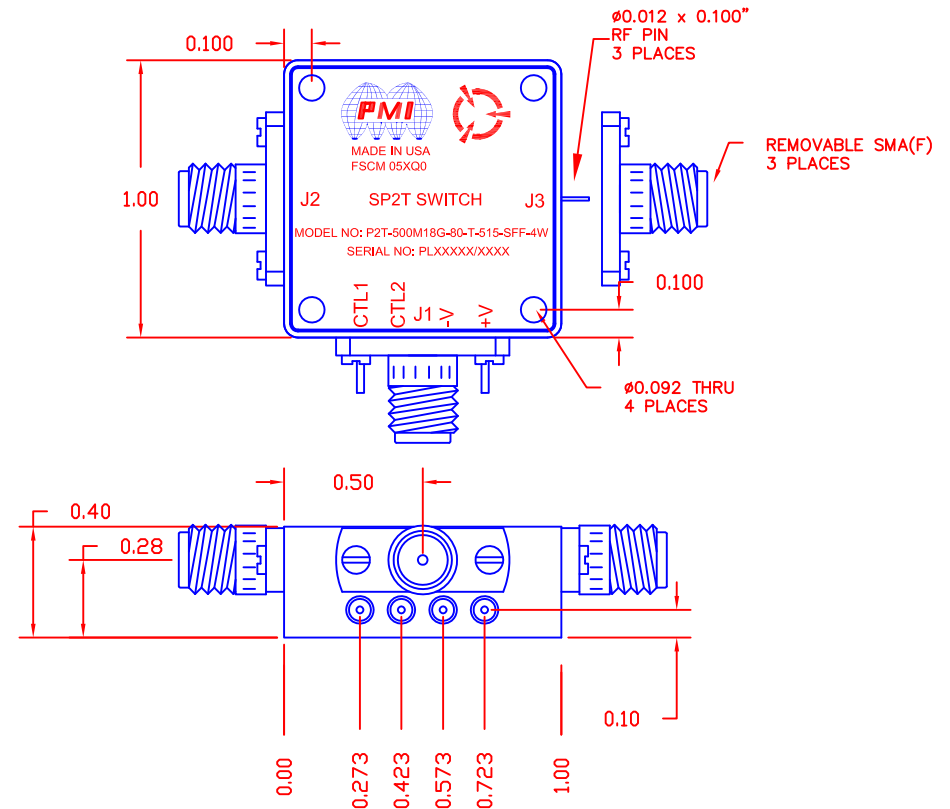
ENVIRONMENTAL RATINGS

- TEMPERATURE: -40°C TO +85°C (OPERATING)
-55°C TO +125°C (STORAGE)
- HUMIDITY: MIL-STD-202F, METHOD 103B COND. B
- SHOCK: MIL-STD-202F, METHOD 213B COND. B
- VIBRATION: MIL-STD-202F, METHOD 204D COND. B
- ALTITUDE: MIL-STD-202F, METHOD 105C COND. B
- TEMPERATURE CYCLE: MIL-STD-202F, METHOD 107

NOTE: SPECIFICATIONS WILL VARY OVER OPERATING TEMPERATURE
NOTE: THE ABOVE SPECIFICATIONS ARE SUBJECT TO CHANGE OR REVISION

| REVISIONS | | | | |
|-----------|------|------------------|----------|----------|
| ZONE | REV. | DESCRIPTION | DATE | APPROVED |
| | 1 | ORIGINAL RELEASE | 11/25/14 | |
| | 2 | ISOLATION UPDATE | 9/20/15 | |

MECHANICAL OUTLINE



PMI CONFIDENTIAL AND PROPRIETARY

PLANAR MONOLITHICS INDUSTRIES, INC.

7311-F GROVE ROAD
FREDERICK, MARYLAND 21704 USA
TEL: 301-662-5019 FAX: 301-662-1731
WEBSITE: www.pmi-rf.com
E-MAIL: sales@pmi-rf.com
ISO 9001 CERTIFIED



ALL DIMENSIONS ARE IN INCHES
TOLERANCES:
X.XX ±0.020
X.XXX ±0.010

| APPROVALS | | DATE | TITLE | | | |
|-----------|-----------|----------|--|----------|----------|--------------|
| DRAWN | <i>KM</i> | 11/25/14 | PRODUCT FEATURE P2T-500M18G-80-T-515-SFF-4W | | | |
| CHECKED | | | SIZE | FSCM NO. | DWG NO. | REV. |
| ISSUED | | | A | 05XQ0 | 27024522 | 2 |
| | | | SCALE | N: S | | SHEET 1 OF 1 |