

4

3

2

1

MECHANICAL

CONTACT: BREAK BEFORE MAKE
 ACTUATOR: LATCHING
 SWITCHING SPEED: 20 mSEC MAX

ELECTRICAL

ACTUATOR VOLTAGE: 28.0 Vdc (22.0–32.0 Vdc)
 ACTUATOR CURRENT: 0.600 A MAX @ 28.0 Vdc
 POWER HANDLING: 200 WCW @ 1.0 GHz
 IMPEDANCE: 50 OHMS

ENVIRONMENTAL

OPERATING TEMP: -54°C to +90°C
 SINE VIBRATION: 30 G'S rms
 LIFE : 1,000,000 CYCLES
 RANDOM VIBRATION: 20 G'S rms

SPECIFICATION:

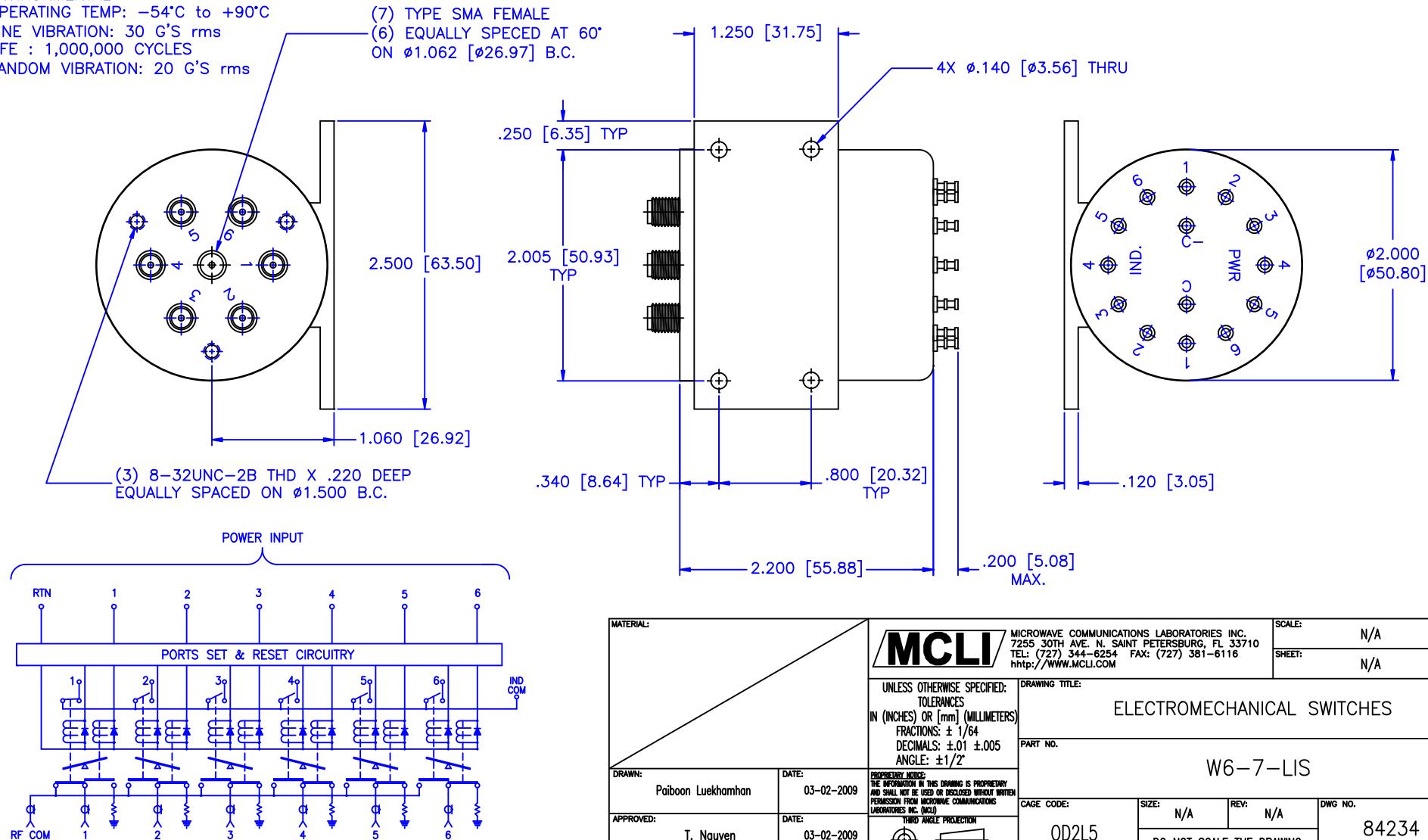
FREQUENCY RANGE (GHz): DC–2.0 2.0–4.0 4.0–8.0 8.0–12.4 12.4–18.0

VSWR (Max.): 1.20:1 1.25:1 1.30:1 1.40:1 1.50:1

INSERTION LOSS (dB): 0.20 0.25 0.30 0.40 0.50

ISOLATION (dB): 90 80 80 70 60

REVISIONS				
ZONE	REV	DESCRIPTION	DATE	APPROVED



MATERIAL:

MCLI

MICROWAVE COMMUNICATIONS LABORATORIES INC.
 7255 30TH AVE. N. SAINT PETERSBURG, FL 33710
 TEL: (727) 344-6254 FAX: (727) 381-6116
 http://WWW.MCLI.COM

SCALE: N/A
 SHEET: N/A

UNLESS OTHERWISE SPECIFIED:
 TOLERANCES
 IN (INCHES) OR (mm) (MILLIMETERS)
 FRACTIONS: ± 1/64
 DECIMALS: ±.01 ±.005
 ANGLE: ±1/2°

DRAWING TITLE:

ELECTROMECHANICAL SWITCHES

PART NO.

W6-7-LIS

DRAWN:

Paiboon Luekhamhan

DATE:

03-02-2009

APPROVED:

T. Nguyen

DATE:

03-02-2009

PROPRIETARY NOTICE:
 THE INFORMATION IN THIS DRAWING IS PROPRIETARY
 AND SHALL NOT BE USED OR DISCLOSED WITHOUT WRITTEN
 PERMISSION FROM MICROWAVE COMMUNICATIONS
 LABORATORIES INC. (MCLI)



CAGE CODE:

OD2L5

SIZE:

N/A

REV:

N/A

DWG NO.

84234

DO NOT SCALE THE DRAWING

4

3

2

1