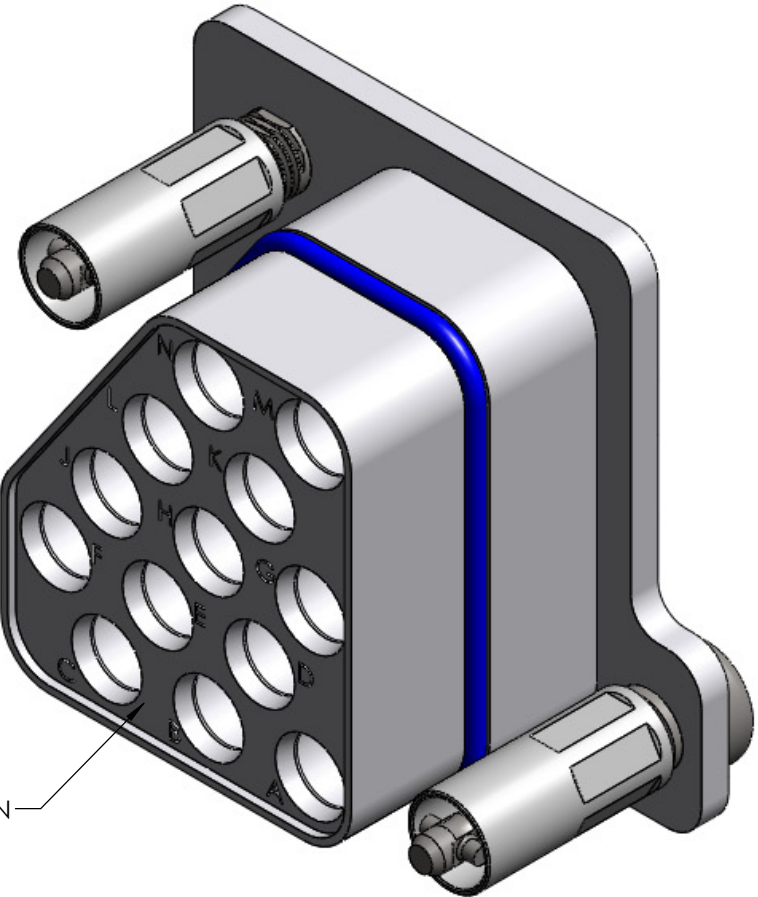
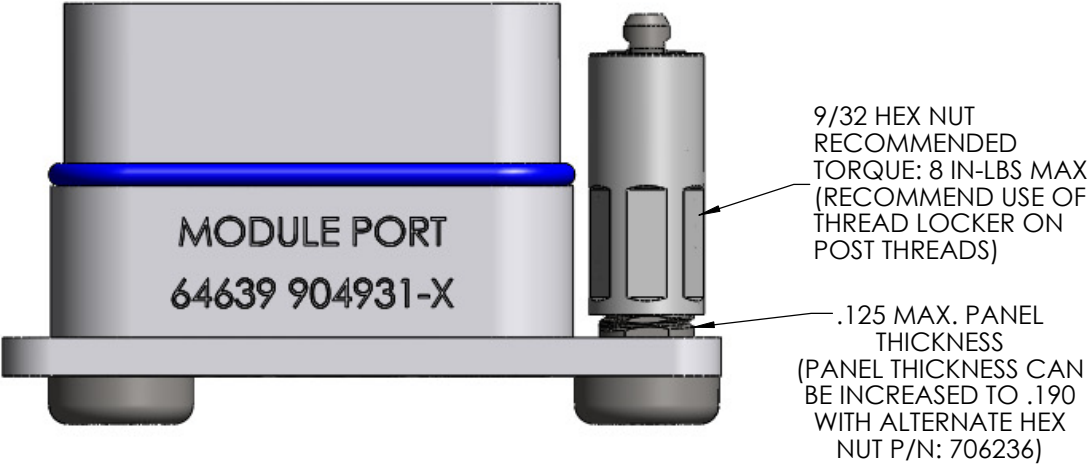
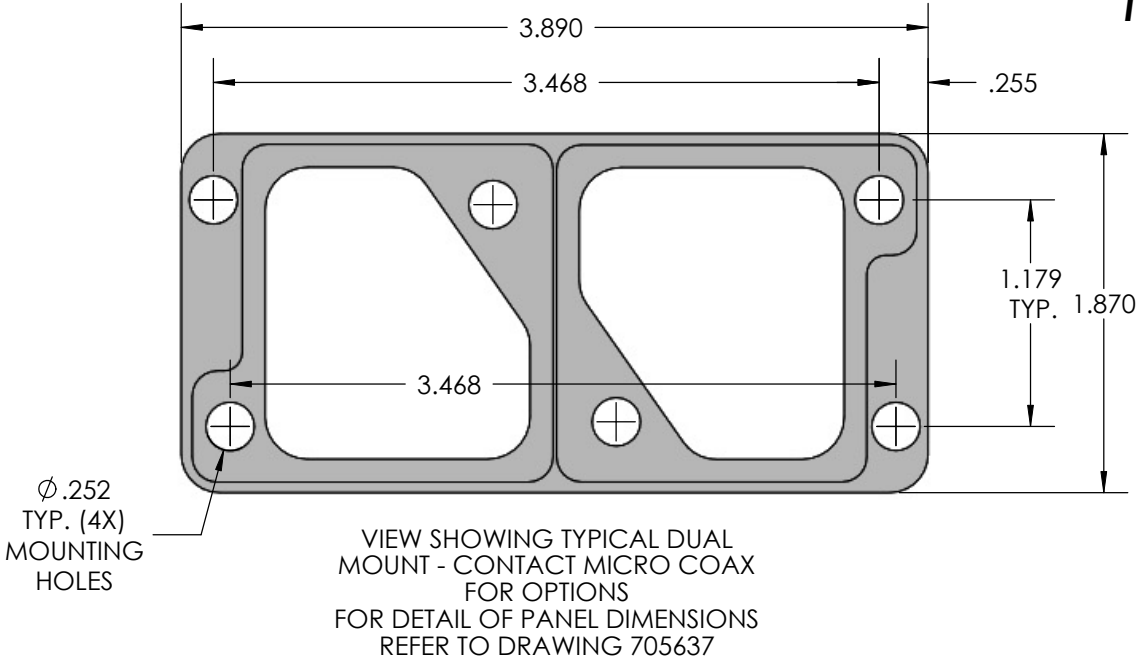
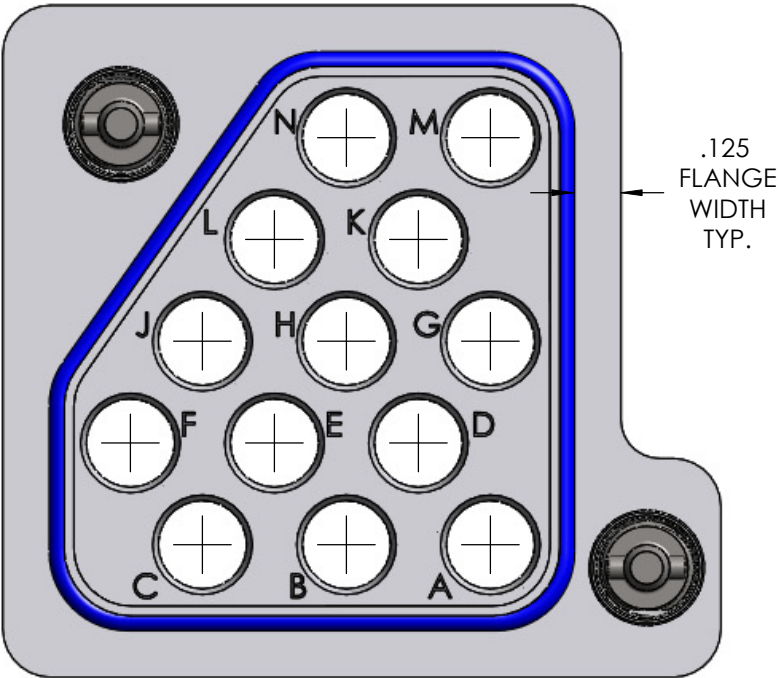


THIS DRAWING IS PROPRIETARY AND CONFIDENTIAL.

REV.	DESCRIPTION	DATE	BY	APPVD
A	ECO 105069	3/4/2010	MJM	RS
A1	ECO 125348	6/25/2012	MJM	RS
A2	ECO 135081	2/13/2013	MJM	RS



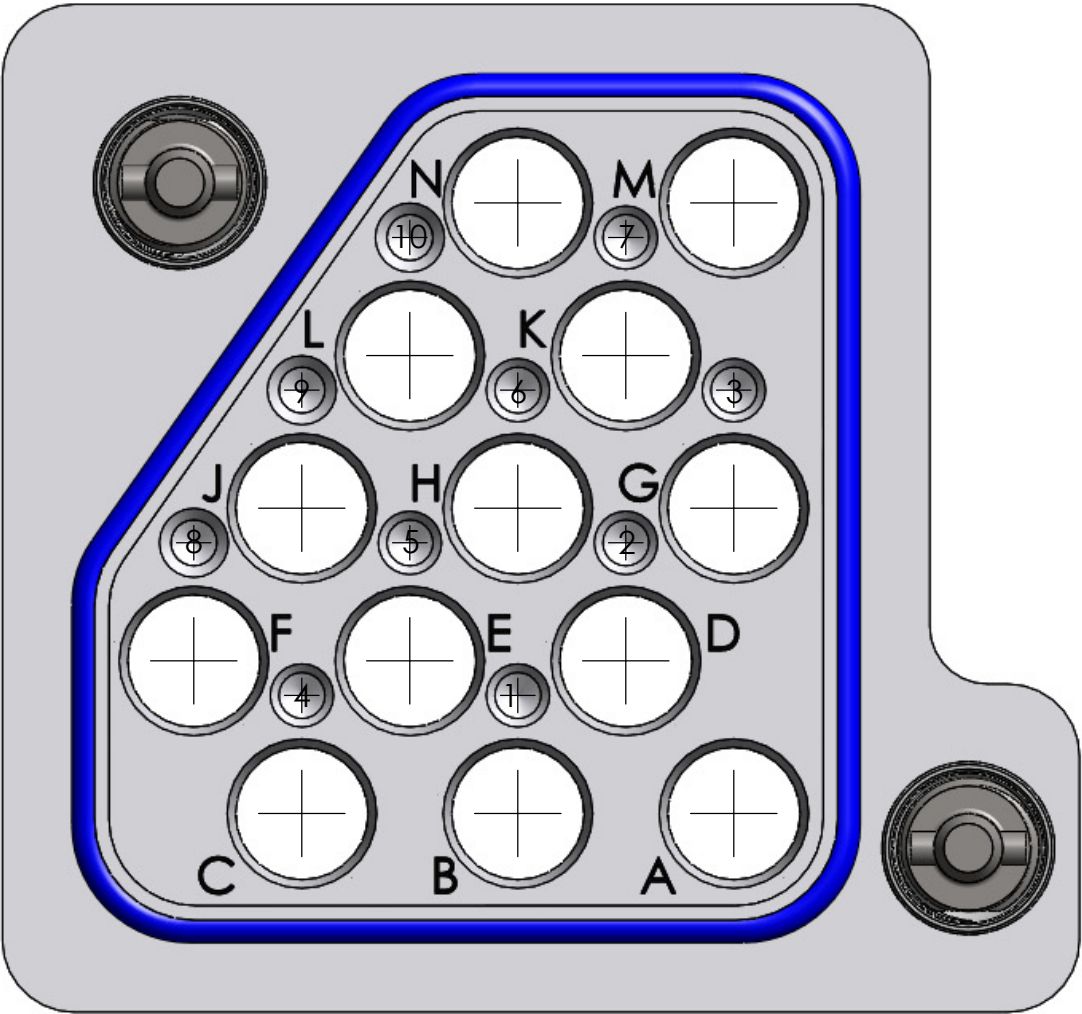
NOTE(S):
SEE SHEET 3 FOR CONNECTOR INSTALLATION INSTRUCTIONS.



MASS	53.84 GRAMS
TOOLING	
CONNECTOR INSTALLATION/REMOVAL TOOL	P/N: 855097
MATERIAL AND FINISH	
706120 (MODULE-PORT HOUSING)	ALUMINUM 6061-T6 PER ASTM-B-221, ALODINE FINISH PER MIL-DTL-5541 CLASS 3
706116 (PANEL ATTACHMENT POSTS)	TITANIUM Ti-6AL-4V (GRADE 5), STA, UNS R56400
706117 (FASTENERS) 705392 (SLEEVES)	STEEL, CORROSION RESISTANT, CONDITION A, NON-MAGNETIC PER ASTM-A-582, UNS NO. S30300 PASSIVATE PER ASTM-A-967
705523 (GASKET)	FLUOROSILICONE PER MIL-R-25988
706268 (CUT SLEEVES)	POLYETHERMIDE THERMOPLASTIC PER ASTM-D-5205

SPECIFICATION DRAWING

THIS SPECIFICATION IS THE PROPERTY OF MICRO-COAX, INC. AND MAY NOT BE USED OR COPIED WITHOUT THE EXPRESS WRITTEN PERMISSION OF MICRO-COAX, INC.		INITIALS		DATE		<div>MICRO-COAX[®]</div> <div>Leading the way in transmission line solutions.</div> <div>Copyright Micro-Coax, Inc.</div>					
		DWN.	MJM	9/29/08							
		CHKD.	MJM	9/29/08							
		APPVD.									
TOLERANCES UNLESS OTHERWISE SPECIFIED		TITLE									
		HOUSING, #8 MODULE-PORT PANEL MOUNT, 13 POSITION									
.XX	± .02	ALL DIMENSIONS IN INCHES UNLESS OTHERWISE SPECIFIED. SCREW THDS. TO BE IN ACCORD WITH ANSI B1.1-1989.		FSCM NO.	SIZE	SCALE	SHEET NO.	DRAWING NO.	REV		
.XXX	± .005										
.XXXX	± .0010										
ANGLES	± 2°										
		64639	B	2:1	1 OF 3	SD904931	A2				

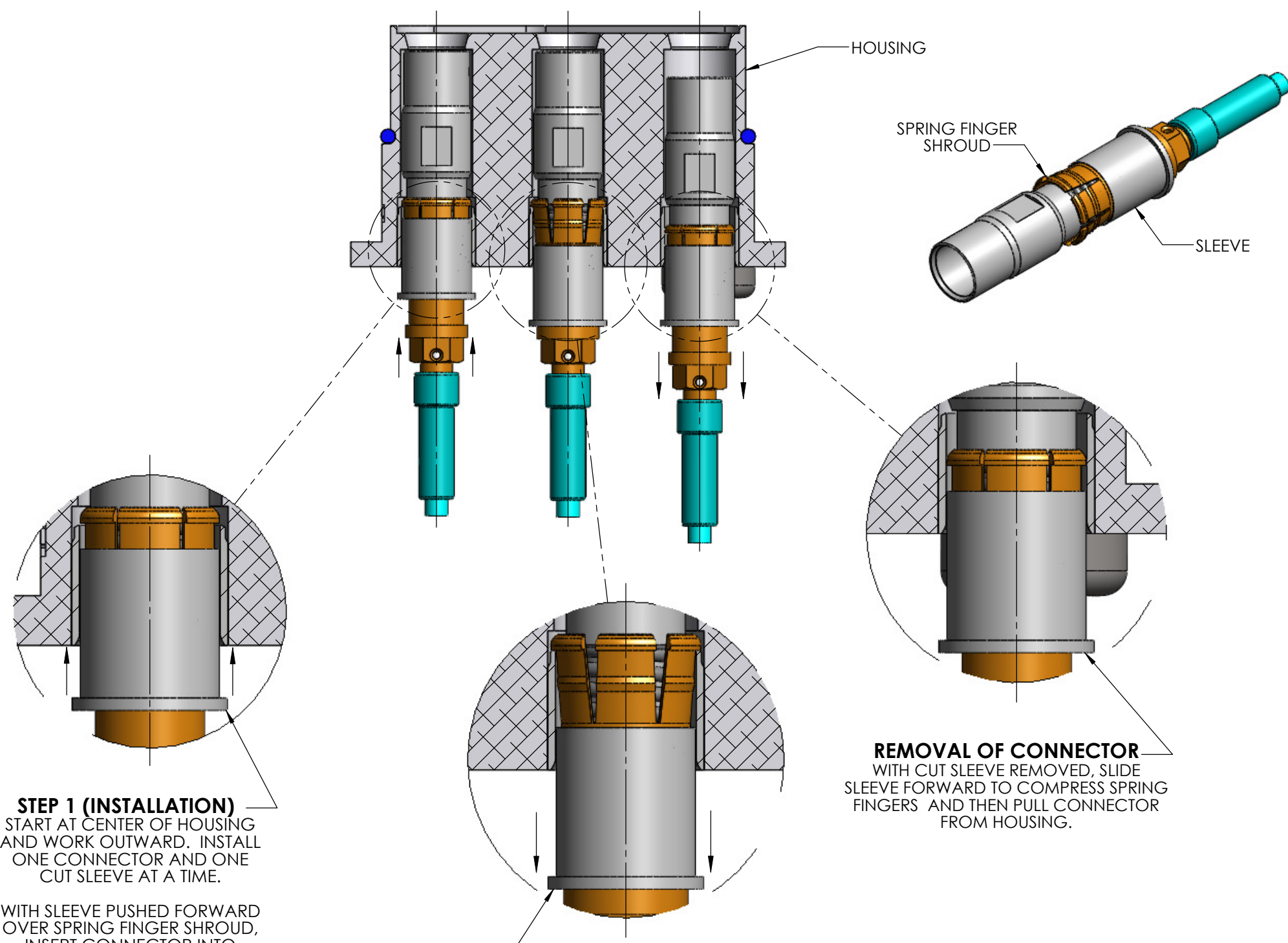


ALL KEYING POSITIONS
SHOWN FOR REFERENCE

KEYING TABLE	
KEYING POSTION	PART NO.
NO KEYING	904931-0
1	904931-1
2	904931-2
3	904931-3
4	904931-4
5	904931-5
6	904931-6
7	904931-7
8	904931-8
9	904931-9
10	904931-10
1 THRU 10	904931-ALL

		INITIALS		DATE		<div>MICRO-COAX[®]</div> <div>Leading the way in transmission line solutions.</div> <div>Copyright Micro-Coax, Inc.</div>			
		DWN.	MJM	9/29/08					
		CHKD.	MJM	9/29/08					
.XX	± .02	APPVD.							
.XXX	± .005	TITLE	HOUSING, #8 MODULE-PORT PANEL MOUNT, 13 POSITION, KEYING						
.XXXX	± .0010								
ANGLES	± 2°								
			FSCM NO.	SIZE	SCALE	SHEET NO.	DRAWING NO.	REV.	
			64639	B	3:1	2 OF 3	SD904931	A2	

VIEW 1

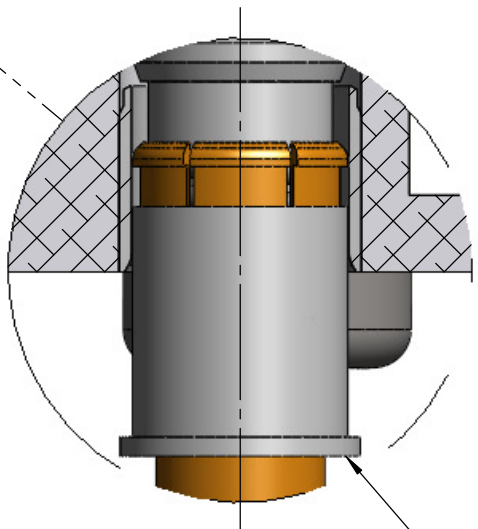
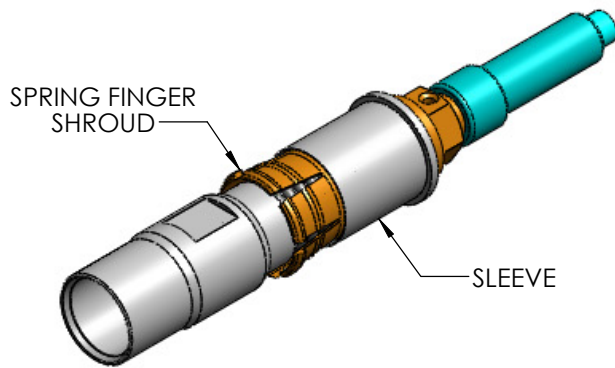


STEP 1 (INSTALLATION)
START AT CENTER OF HOUSING
AND WORK OUTWARD. INSTALL
ONE CONNECTOR AND ONE
CUT SLEEVE AT A TIME.

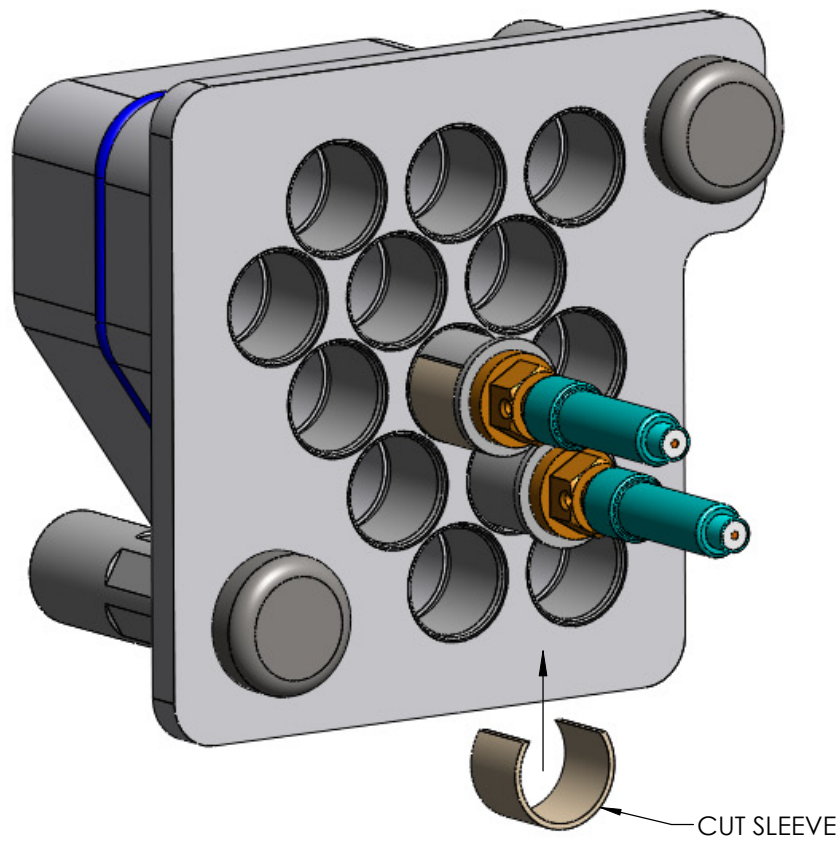
WITH SLEEVE PUSHED FORWARD
OVER SPRING FINGER SHROUD,
INSERT CONNECTOR INTO
HOUSING UNTIL IT BOTTOMS.

STEP 2 (INSTALLATION)
AFTER FULLY INSERTED INTO HOUSING,
SLIDE SLEEVE BACK TO LOCK IN PLACE.
PUSH/PULL CONNECTOR TO VERIFY IT IS
FULLY LOCKED INSIDE HOUSING.
INSTALL CUT SLEEVE PER VIEW 2.

REMOVAL OF CONNECTOR
WITH CUT SLEEVE REMOVED, SLIDE
SLEEVE FORWARD TO COMPRESS SPRING
FINGERS AND THEN PULL CONNECTOR
FROM HOUSING.



VIEW 2



STEP 3 (CUT SLEEVE INSTALLATION)
ENSURE CONNECTOR SLEEVE IS FULLY RETRACTED.
SNAP THE CUT SLEEVE AROUND THE CONNECTOR
ENSURING IT IS FULLY INSERTED UNDER THE REAR
EDGE OF THE CONNECTOR SLEEVE.

REMOVAL OF CUT SLEEVE:
TO REMOVE CUT SLEEVE, GRAB ALONG EDGES OF CUT
AND SNAP SLEEVE OFF OF THE CONNECTOR.

		ALL DIMENSIONS AND TOLERANCES IN INCHES UNLESS OTHERWISE SPECIFIED.		INITIALS		DATE		<div>MICRO-COAX[®]</div> <div>Leading the way in transmission line solutions.</div> <div>Copyright Micro-Coax, Inc.</div>									
				DWN. MJM		9/29/08											
				CHKD. MJM		9/29/08											
		.XX	± .02	APPVD.				TITLE HOUSING, #8 MODULE-PORT PANEL MOUNT, 13 POSITION, CONNECTOR INSERTION INSTRUCTIONS									
		.XXX	± .005														
		.XXX	± .0010														
		ANGLES	± 2°														
USED ON						FSCM NO.		SIZE		SCALE		SHEET NO.		DRAWING NO.		REV.	
						64639		B		2:1		3 OF 3		SD904931		A2	