

USB Smart Power Sensor

PWR-2.5GHS-75

75Ω -30 dBm to +20 dBm, 100 kHz to 2500 MHz

The Big Deal

- 75Ω Impedance
- Low cost
- USB HID device compatible with 32/64 Bit operating systems
- Includes “Measurement Application” GUI (Graphical User Interface) software with an API-DLL com object
- High speed measurement capability



CASE STYLE: JL1337



Product Overview

The Mini-Circuits PWR-2.5GHS-75 Smart Power Sensor is a 75Ω pocket-sized, 4.89” x 1.74” x 0.95”, precision test USB HID device (no driver installation required) that turns a Windows® or Linux® PC into a power meter. All specifications provided in the data sheet apply to continuous wave (CW) signals. Each unit is shipped with a quick-locking USB cable for reliable connectivity. Native software and detailed user guides are provided on the included CD, or can be downloaded from minicircuits.com anywhere an internet connection is available, providing a full range of data analysis options.

Key Features

Feature	Advantages
USB HID (Human Interface Device)	Plug-and-Play (no need to install driver for the device).
GUI Measurement Application Software built-in	Enables the user to perform measurements on RF components such as Couplers, Filters, Amplifiers etc. and displays numerical data and graphs.
32/64 Bit operating systems	Compatible with Windows® and Linux® ¹ operating systems.
No calibration required before taking measurement	The PWR-2.5GHS-75 does not require any reference signal for calibration.

¹Windows is a registered trademark of Microsoft Corporation in the United States and other countries. Linux is a registered trademark of Linus Torvalds. Neither Mini-Circuits nor the Mini-Circuits PWR-series smart power sensors are affiliated with or endorsed by the owners of the above referenced trademarks. Mini-Circuits and the Mini-Circuits logo are registered trademarks of Scientific Components Corporation.



Wide Dynamic Range

USB Smart Power Sensor PWR-2.5GHS-75

75Ω 100 kHz to 2500 MHz

Product Features

- Wide bandwidth, 100 kHz to 2500 MHz
- 50 dB Dynamic Range, -30 to +20 dBm
- Good VSWR, 1.03:1 typ.
- Fast measurement speed, 30 msec typ.
- Automatic frequency calibration & temperature compensation
- Multi-sensor capability (up to 24)
- Built in Application Measurement Software
- Remote operation via internet
- Effective, easy-to-use Windows® GUI
- Linux® support
- Compatible with 32/64-bit Windows® or Linux® operating systems
- Supports a wide range of programming environments (See application note [AN-49-001](#) for details)



Case Style: JL1337

Model No.	Description	Price	Qty.
PWR-2.5GHS-75	USB smart Power Sensor	\$795.00 ea.	(1-4)
Included Accessories			
PWRSN-2.5GHS-75	Power Sensor Head		
USB-CBL+	6 ft data cable (USB Type-A Plug)		1
PWR-SEN-CD	Installation CD		1

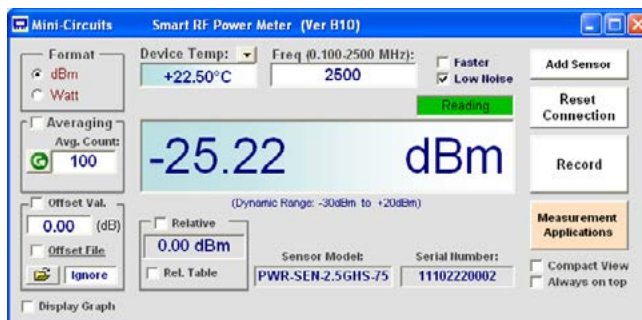
Typical Applications

- Turn almost any Windows or Linux PC into a Power Meter
- Pocket-sized portability for benchtop testing anywhere
- Remote location monitoring
- Automatic, scheduled data collection
- Evaluate high-power, multi-port devices with built-in virtual couplers/attenuators & other software tools

RoHS Compliant

See our web site for RoHS Compliance methodologies and qualifications

Mini-Circuits Power Meter Program for Smart USB Power Sensor



Electrical Specifications (CW)², -30 dBm to +20 dBm, 100 kHz to 2500 MHz

Parameter		Freq. Range (MHz)	Min.	Typ.	Max.	Units
Dynamic Range ³		0.1 - 2500	-30	-	+20	dBm
VSWR		0.1 - 2500	-	1.03	1.20	:1
Uncertainty of Power Measurement @ 25°C	@ -30 to +5 dBm	0.1 - 1000	-	± 0.10	± 0.30	dB
		1000 - 2500	-	± 0.05	± 0.30	dB
	@ +5 to +12 dBm	0.1 - 1000	-	± 0.05	± 0.25	dB
		1000 - 2500	-	± 0.05	± 0.20	dB
	@ +12 to +20 dBm	0.1 - 1000	-	± 0.10	± 0.30	dB
		1000 - 2500	-	± 0.15	± 0.40	dB
Uncertainty of Power Measurement @ 0°C to 50°C	@ -30 to +5 dBm	0.1 - 1000	-	± 0.10	-	dB
		1000 - 2500	-	± 0.10	-	dB
	@ +5 to +12 dBm	0.1 - 1000	-	± 0.10	-	dB
		1000 - 2500	-	± 0.10	-	dB
	@ +12 to +20 dBm	0.1 - 1000	-	± 0.10	-	dB
		1000 - 2500	-	± 0.15	-	dB
Linearity @ 25°C		0.1 - 2500	-	± 2.3	-	%
Measurement Resolution		0.1 - 2500	0.01	-	-	dB
Averaging Range		0.1 - 2500	1	-	999	-
Measurement Speed	@ Low Noise Mode	0.1 - 2500	-	100	-	mSec
	@ Faster Mode		-	30	-	
Current (via host USB)		0.1 - 2500	-	40	70	mA

Minimum System Requirements

Parameter	Requirements
Interface	USB HID
Host operating system	32 Bit operating system: Windows 98®, Windows XP®, Windows Vista®, Windows 7®, Windows 8® 64 Bit operating system: Windows Vista®, Windows 7®, Windows 8® Linux® support: 32/64 Bit operating system
Hardware	Pentium® II or higher, RAM 256 Mb, USB port
USB cable (supplied)	Power sensor to be used with the supplied USB cable only

Absolute Maximum Ratings

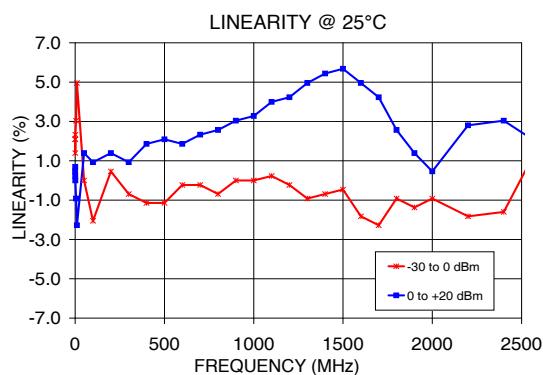
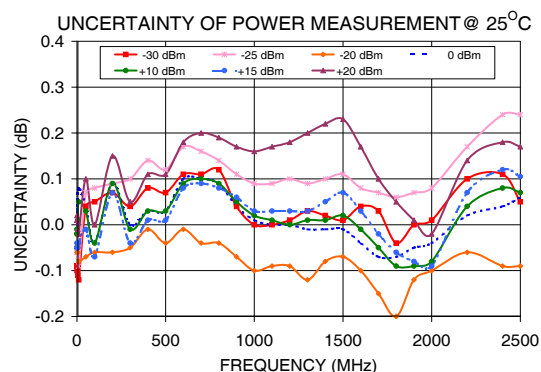
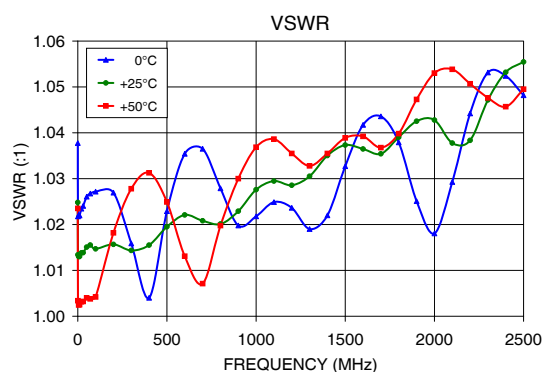
Parameter	Ratings
Operating Temperature	0°C to 50°C
Storage Temperature	-30°C to 70°C
DC Voltage at RF port	4V
CW Power	+25dBm

Permanent damage may occur if any of these limits are exceeded. Operating in the range between operating power limits and absolute maximum ratings for extended periods of time may result in reduced life and reliability.

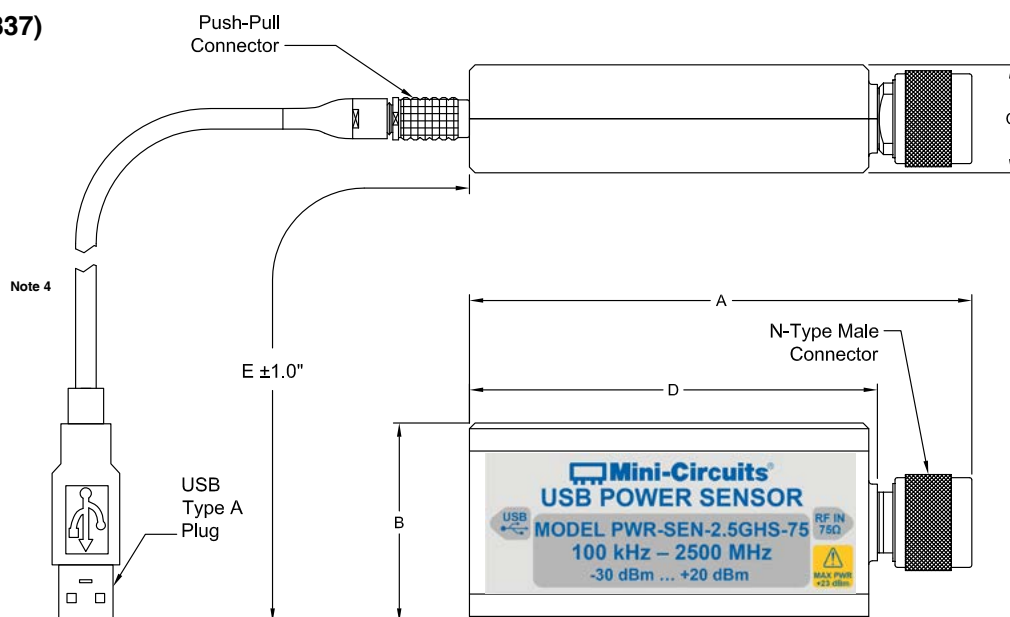
² All specifications apply to continuous wave (CW) signals.

³ Maximum continuous safe operational power limit: +23 dBm. Performance is guaranteed up to +20 dBm.

Typical Performance Curves



Outline Drawing (JL1337)



Outline Dimensions (inch mm)

A	B	C	D	E	WT. GRAMS
4.39 111.5	1.74 44.2	0.95 24.1	3.50 88.9	72.0 1829	200

⁴ Power sensor to be used with the supplied USB cable only.

Warranty

For a full statement of the limited warranty offered by Mini-Circuits for the PWR-2.5GHS-75 and the non-exclusive license for the software provided with the PWR-2.5GHS-75 and the exclusive rights and remedies thereunder, together with Mini-Circuit's limitations of warranties and limitation of liability, please refer to Mini-Circuits User Guide for the PWR-2.5GHS-75 and Mini-Circuits standard terms of sale found on its standard purchase order acknowledgment form, which are incorporated herein by reference. If you do not have these documents, please contact a Mini-Circuits representative and these documents will be provided promptly. Alternatively, for a copy of Mini-Circuits' standard terms of sale, visit Mini-Circuits' website at www.minicircuits.com/MCLStore/terms.jsp.

THE SOFTWARE IS PROVIDED "AS IS", "WITH ALL FAULTS", AND WITHOUT ANY EXPRESS OR IMPLIED WARRANTY OF ANY KIND, ALL OF WHICH ARE HEREBY WAIVED.

Ordering, Pricing & Availability Information see our web site


Model	Description
PWR-2.5GHS-75	USB <i>Smart</i> Power Sensor

Included Accessories	Description
PWRSN-2.5GHS-75	Power Sensor Head
USB-CBL+ ⁵	6 ft data cable with USB Type-A plug connector
PWR-SEN-CD	Installation CD

⁵ Power sensor to be used with the supplied USB cable only.

Calibration

Model	Description
CALSN-2.5GHS-75	Calibration Service


Click Here

Additional Notes

- Performance and quality attributes and conditions not expressly stated in this specification document are intended to be excluded and do not form a part of this specification document.
- Electrical specifications and performance data contained in this specification document are based on Mini-Circuit's applicable established test performance criteria and measurement instructions.
- The parts covered by this specification document are subject to Mini-Circuits standard limited warranty and terms and conditions (collectively, "Standard Terms"); Purchasers of this part are entitled to the rights and benefits contained therein. For a full statement of the Standard Terms and the exclusive rights and remedies thereunder, please visit Mini-Circuits' website at www.minicircuits.com/MCLStore/terms.jsp