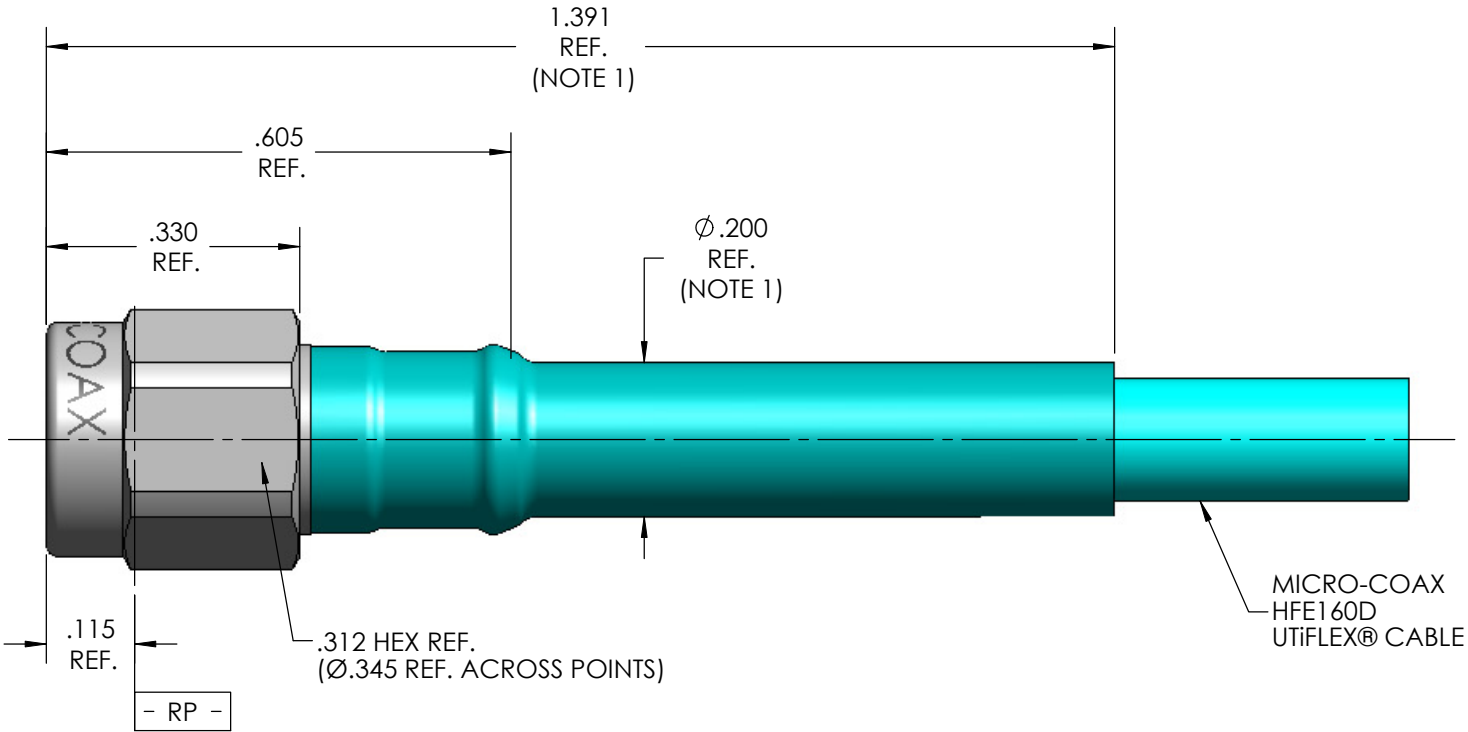
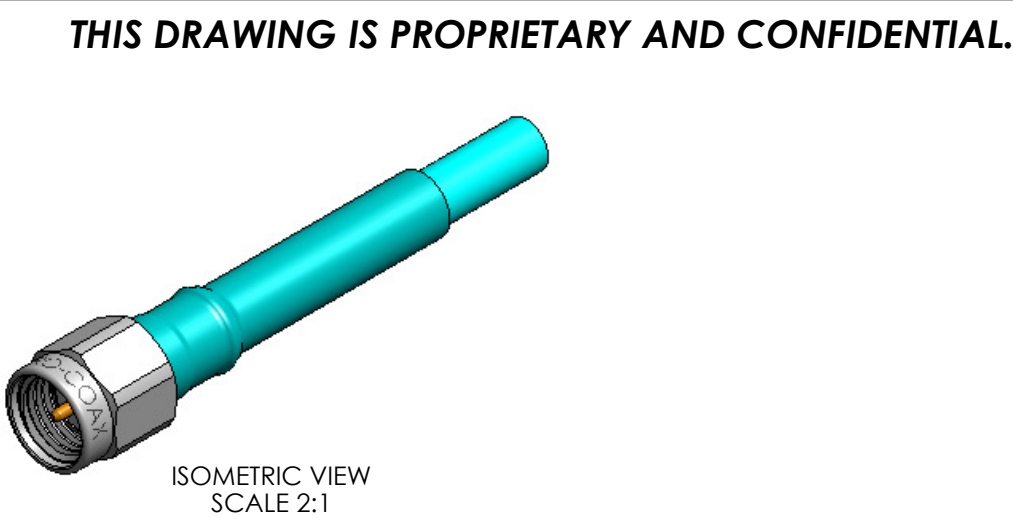


MECHANICAL CHARACTERISTICS	
INTERFACE	MIL-STD-348, FIGURE 310-1
IN ACCORDANCE WITH THE INTENT OF SLANT SHEET	MIL-PRF-39012/55 REF.
RECOMMENDED MATING TORQUE	9 IN-LBS. NOM.
COUPLING PROOF TORQUE	15 IN-LBS. MIN.
COUPLING NUT RETENTION	60 LBS. MIN.
FORCE TO ENGAGE	2 IN-LBS. MAX.
FORCE TO DISENGAGE	2 IN-LBS. MAX.
DURABILITY	500 CYCLES MIN.
AXIAL CONTACT RETENTION (FROM INTERFACE)	6 LBS. MIN.
AXIAL CONTACT RETENTION (FROM CABLE)	6 LBS. MIN.
CENTER CONTACT INSERTION (FROM CABLE)	3 LBS. MAX
CENTER CONTACT WITHDRAW (FROM CABLE)	1 Oz. MIN.
CABLE RETENTION	20 LBS. MIN.
MASS	2.45 GRAMS NOM.
ELECTRICAL CHARACTERISTICS	
IMPEDANCE	50 Ohms NOM.
MAXIMUM FREQUENCY	18 GHz
VSWR DC - 18 GHz	1.16:1 MAX.
INSERTION LOSS	0.03 √F (GHz) dB MAX.
DIELECTRIC WITHSTANDING VOLTAGE	1075 Vrms MIN.
INSULATION RESISTANCE	5000 MegaOhms MIN.
RF LEAKAGE DC - 18 GHz	-90 dB MIN.
CORONA	280 Vrms MIN. @ 70,000 FEET
RF HIGH POTENTIAL	725 Vrms MIN.
CONTACT RESISTANCE (INNER)	3.0 MilliOhms MAX.
CONTACT RESISTANCE (OUTER)	2.0 MilliOhms MAX.
ENVIRONMENTAL CHARACTERISTICS	
OPERATING TEMPERATURE	-62°C TO 125°C
VIBRATION	MIL-STD-202, METHOD 204, CONDITION D
MECHANICAL SHOCK	MIL-STD-202, METHOD 213, CONDITION I
THERMAL SHOCK	MIL-STD-202, METHOD 107, CONDITION B
CORROSION	MIL-STD-202, METHOD 101, CONDITION B, 5%
MOISTURE RESISTANCE	MIL-STD-202, METHOD 106, CONDITION (NO VIBRATION)
MATERIALS AND FINISH	
COUPLING NUT	STEEL, CORROSION RESISTANT, PER ASTM-A-582, UNS NO. S30300, PASSIVATE PER ASTM-A-967
BODY	STEEL, CORROSION RESISTANT, PER ASTM-A-582, UNS NO. S30300, GOLD PLATE PER MIL-DTL-45204, OVER NICKEL PLATE PER AMS-QQ-N-290
CONTACT	BERYLLIUM COPPER, ASTM-B-196 GOLD PLATED PER MIL-DTL-45204, OVER NICKEL PLATE PER AMS-QQ-N-290
SNAP RING	BERYLLIUM COPPER, PER ASTM-B-197
INSULATOR	TFE FLUOROCARBON PER ASTM-D-1710
GASKET	SILICONE RUBBER PER ZZ-R-765
APPLICATION	
CABLE(S)	HFE160D
INSTALLATION	PER CONFIGURATOR



NOTE:

1. MARKER LOCATION ON THIS DRAWING IS FOR REFERENCE ONLY AND IS SUBJECT TO CHANGE WITHOUT NOTICE.

REV	DESCRIPTION	DATE	BY	APPVD	CHKD
A	INITIAL RELEASE - ECO 135201	4/11/2013	MJM	RS	CCF

THIS SPECIFICATION IS THE PROPERTY OF MICRO-COAX, INC. AND MAY NOT BE USED OR COPIED WITHOUT THE EXPRESS WRITTEN PERMISSION OF MICRO-COAX, INC.		INITIALS		DATE		<div>MICRO-COAX[®]</div> <div>Leading the way in transmission line solutions.</div> <div>Copyright Micro-Coax, Inc.</div>					
		DWN.	MJM	2/11/11							
		CHKD.	CCF	2/8/11							
		APPVD.									
TOLERANCES UNLESS OTHERWISE SPECIFIED		TITLE									
		SMA PLUG, DIRECT SOLDER, HFE160D									
.XX	± .02	ALL DIMENSIONS IN INCHES UNLESS OTHERWISE SPECIFIED. SCREW THDS. TO BE IN ACCORD WITH ANSI B1.1-1989.		FSCM NO.	SIZE	SCALE	SHEET NO.	DRAWING NO.		REV	
.XXX	± .005			64639	B	4:1	1 OF 1	SD905105	A		
.XXXX	± .0010										
ANGLES	±2°										