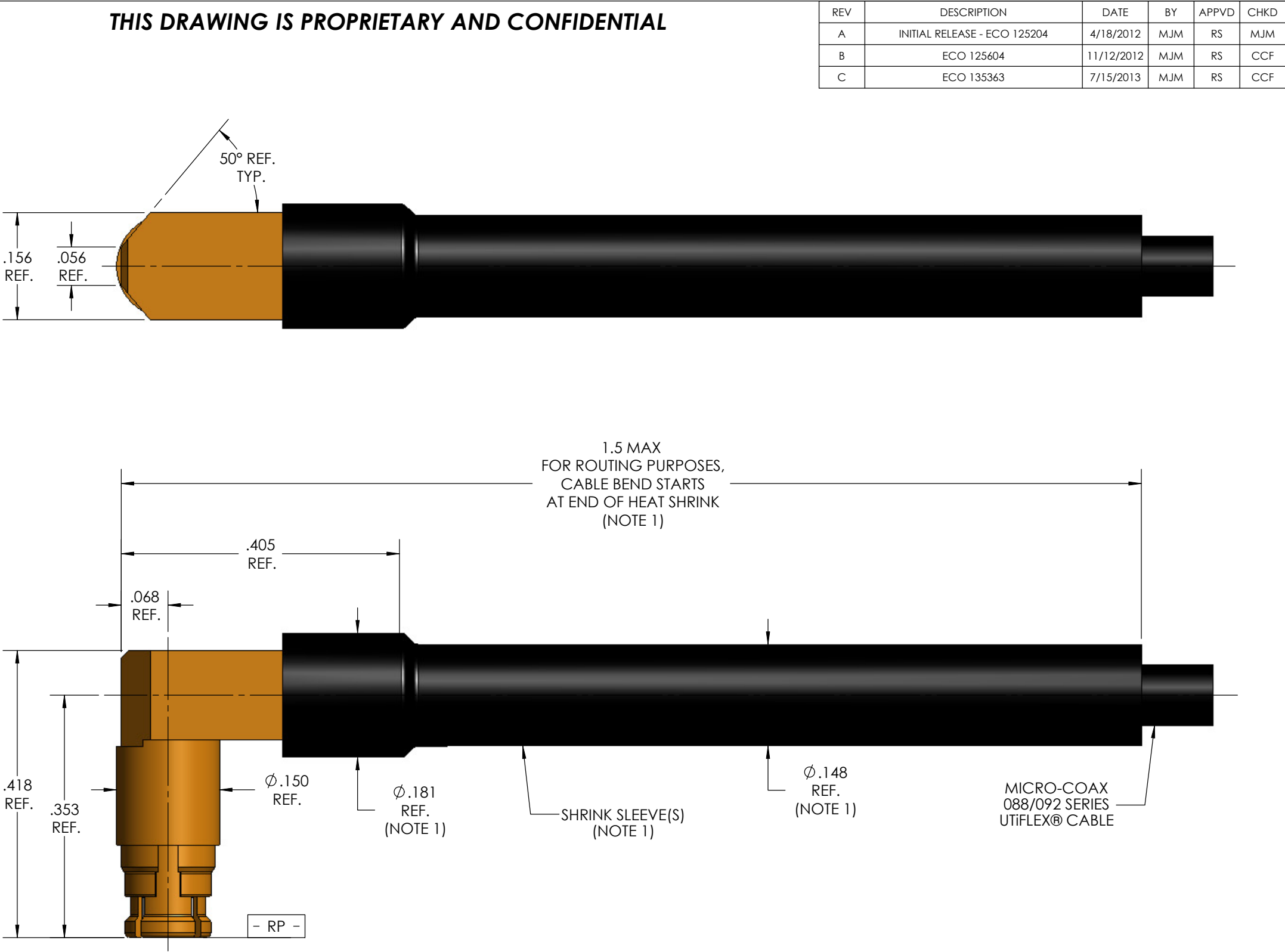


MECHANICAL CHARACTERISTICS	
INTERFACE	MIL-STD-348, FIGURE 326-1
IN ACCORDANCE WITH THE INTENT OF SLANT SHEET	DSCC 94007 & 94008 REF.
FORCE TO ENGAGE (FULL, LIMITED, SMOOTH)	15.0, 10.0, 2.0 LBS. MAX.
FORCE TO DISENGAGE (FULL, LIMITED, SMOOTH)	5.0, 2.0, 0.5 LBS. MIN.
AXIAL CONTACT RETENTION (FROM INTERFACE)	3.0 LBS. MIN.
AXIAL CONTACT RETENTION (FROM CABLE)	3.0 LBS. MIN.
CABLE RETENTION	10 LBS. MIN.
DURABILITY (FULL, LIMITED, SMOOTH	100, 500, 1000 CYCLES MIN.
MASS	0.98 GRAMS NOM.
ELECTRICAL CHARACTERISTICS	
IMPEDANCE	50 Ohms NOM.
MAXIMUM FREQUENCY	26.5 GHz
VSWR DC - 6.0 GHz	1.12:1 MAX.
6.0 - 18.0 GHz	1.20:1 MAX.
18.0 - 26.5 GHz	1.30:1 MAX.
INSERTION LOSS	0.045 √F (GHz)dB MAX.
DIELECTRIC WITHSTANDING VOLTAGE	650 Vrms MIN. @ SEA LEVEL
INSULATION RESISTANCE	5000 MegaOhms MIN.
RF LEAKAGE DC - 3.0 GHz	-80 dB MIN.
3.0 - 26.5 GHz	-65 dB MIN.
CORONA	170 Vrms MIN. @ 70,000 FEET
RF HIGH POTENTIAL (5 MHz)	425 Vrms MIN. @ SEA LEVEL
CONTACT RESISTANCE (INNER)	6.0 MilliOhms MAX.
CONTACT RESISTANCE (OUTER)	2.0 MilliOhms MAX.
ENVIRONMENTAL CHARACTERISTICS	
OPERATING TEMPERATURE	-100°C TO 150°C
VIBRATION	MIL-STD-202, METHOD 204, CONDITION D
MECHANICAL SHOCK	MIL-STD-202, METHOD 213, CONDITION I
THERMAL SHOCK	MIL-STD-202, METHOD 107, CONDITION B
CORROSION	MIL-STD-202, METHOD 101, CONDITION B, 5%
MATERIALS AND FINISH	
MAIN BODY, REAR BODY, CONTACT(S), EMI RING, ANTI-ROCK RING	BERYLLIUM COPPER, PER ASTM-B-196, GOLD PLATED PER MIL-DTL-45204, OVER NICKEL PLATE PER AMS-QQ-N-290
FRONT INSULATOR, BEAD(S)	POLYPHENYLENE SULFIDE (PPS), PER ASTM-D-6358
REAR INSULATOR	TFE FLUOROCARBON PER ASTM-D-1710
APPLICATION	
CABLE(S)	088D/092D
INSTALLATION	PER CONFIGURATOR



NOTES:

1. MARKER LOCATION ON THIS DRAWING IS FOR REFERENCE ONLY AND IS SUBJECT TO CHANGE WITHOUT NOTICE.
2. ALL SPECIFICATIONS LISTED ON THIS DRAWING WILL ALSO APPLY TO CONNECTOR 905178-EM (EQUIPMENT MODEL).

THIS SPECIFICATION IS THE PROPERTY OF MICRO-COAX, INC. AND MAY NOT BE USED OR COPIED WITHOUT THE EXPRESS WRITTEN PERMISSION OF MICRO-COAX, INC.		INITIALS		DATE		<div>MICRO-COAX</div> <div>PROVEN RELIABLE</div>					
		DWN.	MJM	2/22/12							
		CHKD.	CCF	7/18/13							
		APPVD.									
TOLERANCES UNLESS OTHERWISE SPECIFIED		TITLE SMP SOCKET, EXTENDED RIGHT ANGLE, CHAMFERED, PROFILE, 088/092 SERIES, SPACE GRADE									
.XX	± .02	ALL DIMENSIONS IN INCHES UNLESS OTHERWISE SPECIFIED. SCREW THDS. TO BE IN ACCORD WITH ANSI B1.1-1989.				FSCM NO.	SIZE	SCALE	SHEET NO.	DRAWING NO.	REV
.XXX	± .005					64639	B	6:1	1 OF 1	SD905178	C
.XXXX	± .0010										
ANGLES	± 2°										