

Monitor Tee/dc Blocks

2047 Series

V2.00

Features

- Broadband Performance .75 to 50 GHz
- Power: Average 20 Watts CW
Peak 1000 Watts
- Temperature Range: -54° to +71°C
- Connectors: SMA per MIL-C-39012, 3.5 mm

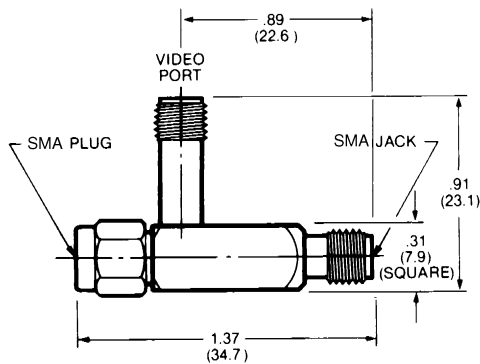


FIG. 1

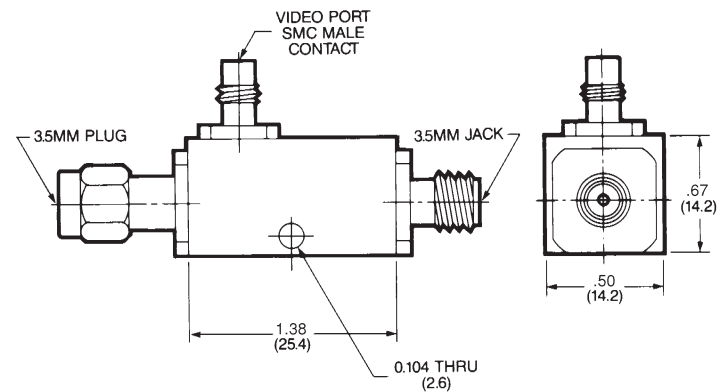


FIG. 2

All dimensions are $\pm .020$

Specifications

PART NO.	FIG. NO.	FREQUENCY RANGE (GHz)	VSWR (max.)	INSERTION LOSS dB (max.)	MAIN LINE MAXIMUM VOLTAGE (Vdc)	MAXIMUM CURRENT (Adc)	WEIGHT	
							oz.	g
2047-6010-00	1	0.75-2.0	1.30	0.3	600	.25	0.5	14.2
2047-6011-00	1	1.5-4.0	1.35	0.4	600	.25	0.5	14.2
2047-6012-00	1	2.6-5.2	1.40	0.5	600	.25	0.5	14.2
2047-6013-00	1	4.0-11.0	1.45	0.7	600	.25	0.5	14.2
2047-6014-00	1	8.0-12.4	1.45	0.7	600	.25	0.5	14.2
2047-6015-00	1	11.0-18.0	1.50	0.7	600	.25	0.5	14.2
2047-6016-00	2	2.0-18.0	1.35	1.0	250	.50	.62	17.6

Finish: Gold plate for Figure 1.
Epoxy paint for Figure 2