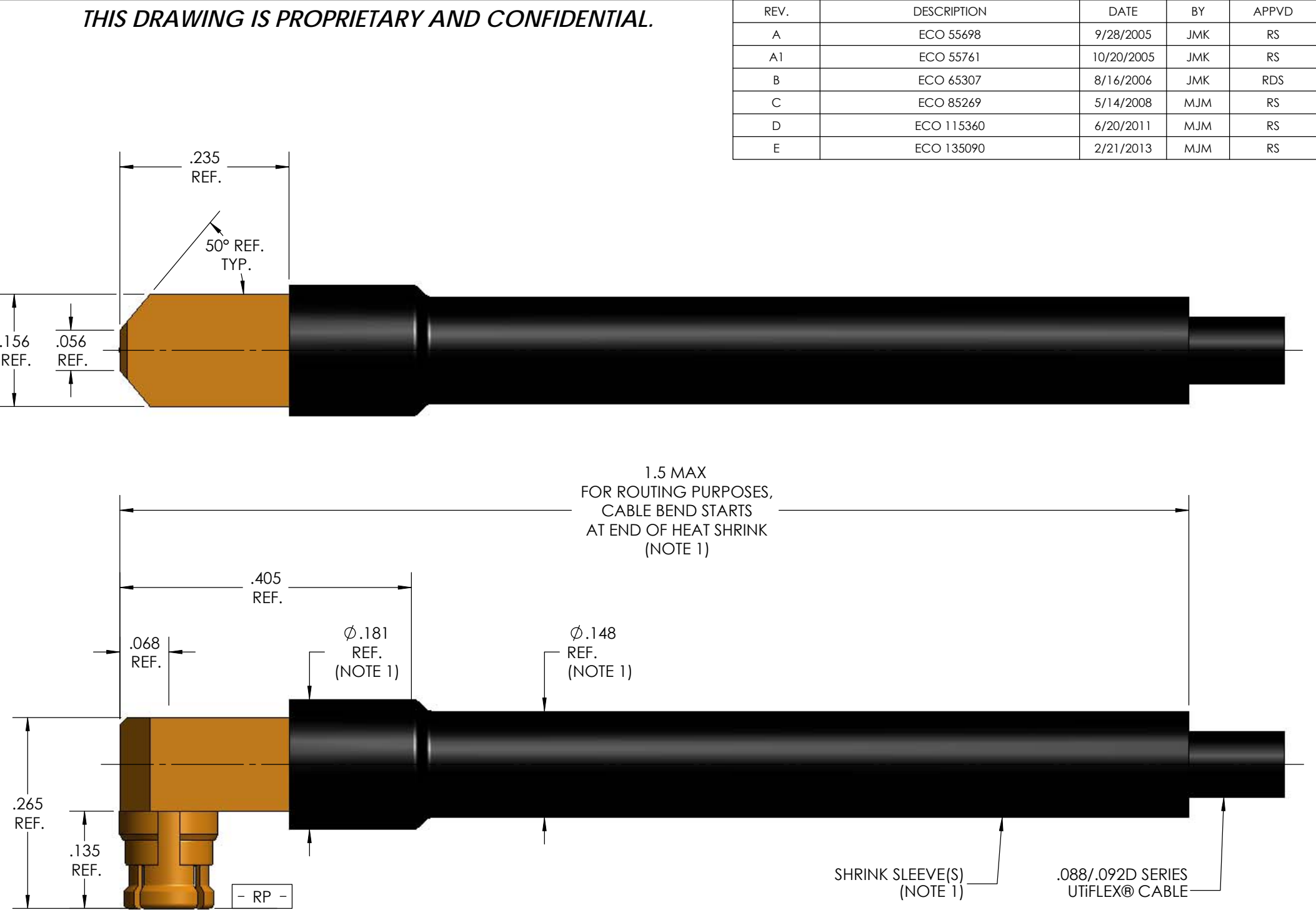


MECHANICAL CHARACTERISTICS	
INTERFACE	MIL-STD-348, FIGURE 326-1
IN ACCORDANCE WITH THE INTENT OF SLANT SHEET	DSCC 94007 & 94008 REF.
FORCE TO ENGAGE (FULL, LIMITED, SMOOTH)	15.0, 10.0, 2.0 LBS. MAX.
FORCE TO DISENGAGE (FULL, LIMITED, SMOOTH)	5.0, 2.0, 0.5 LBS. MIN.
AXIAL CONTACT RETENTION (FROM INTERFACE)	3.0 LBS. MIN.
AXIAL CONTACT RETENTION (FROM CABLE)	3.0 LBS. MIN.
CABLE RETENTION	6.0 LBS. MIN.
DURABILITY (FULL, LIMITED, SMOOTH)	100, 500, 1000 CYCLES MIN.
MASS	0.68 GRAMS NOM.
ELECTRICAL CHARACTERISTICS	
IMPEDANCE	50 Ohms NOM.
MAXIMUM FREQUENCY	40.0 GHz
VSWR DC - 18.0 GHz	1.20:1 MAX.
18.0 - 40.0 Ghz	1.35:1 MAX.
INSERTION LOSS	0.08 √F (GHz)dB MAX.
DIELECTRIC WITHSTANDING VOLTAGE	650 Vrms MIN.
INSULATION RESISTANCE	5000 MegaOhms MIN.
RF LEAKAGE DC - 3 GHz	-80 dB MIN.
3 - 18 GHz	-65 dB MIN.
CORONA	170 Vrms MIN. @ 70,000 FEET
RF HIGH POTENTIAL (5 MHz)	425 Vrms MIN.
CONTACT RESISTANCE (INNER)	6.0 MilliOhms MAX.
CONTACT RESISTANCE (OUTER)	2.0 MilliOhms MAX.
ENVIRONMENTAL CHARACTERISTICS	
OPERATING TEMPERATURE	-100°C TO 150°C
VIBRATION	MIL-STD-202, METHOD 204, CONDITION D
MECHANICAL SHOCK	MIL-STD-202, METHOD 213, CONDITION I
THERMAL SHOCK	MIL-STD-202, METHOD 107, CONDITION B
CORROSION	MIL-STD-202, METHOD 101, CONDITION B, 5%
MATERIALS AND FINISH	
BODIES, CONTACT, ANTI-ROCK RING, EMI SHIELD RING	BERYLLIUM COPPER, PER ASTM-B-196, GOLD PLATED PER MIL-DTL-45204, OVER NICKEL PLATE PER AMS-QQ-N-290
FRONT INSULATOR, DIELECTRIC BEAD	POLYPHENYLENE SULFIDE (PPS), PER ASTM-D-6358
REAR INSULATOR	TFEFLUOROCARBON PER ASTM-D-1710
APPLICATION	
CABLE(S)	088D/092D
INSTALLATION	PER CONFIGURATOR



- NOTE:
1. MARKER LOCATION ON THIS DRAWING IS FOR REFERENCE ONLY AND IS SUBJECT TO CHANGE WITHOUT NOTICE.
 2. ALL SPECIFICATIONS LISTED ON THIS DRAWING WILL ALSO APPLY TO CONNECTOR 904214-EM (EQUIPMENT MODEL).

AL.	REV.	DESCRIPTION	DATE	BY	APPVD
	A	ECO 55698	9/28/2005	JMK	RS
	A1	ECO 55761	10/20/2005	JMK	RS
	B	ECO 65307	8/16/2006	JMK	RDS
	C	ECO 85269	5/14/2008	MJM	RS
	D	ECO 115360	6/20/2011	MJM	RS
	E	ECO 135090	2/21/2013	MJM	RS

1.5 MAX
ROUTING PURPOSES,
TABLE BEND STARTS
END OF HEAT SHRINK
(NOTE 1)

SHRINK SLEEVE(S)
(NOTE 1)

.088/.092D SERIES
UTIFLEX® CABLE

SPECIFICATION DRAWING

THIS SPECIFICATION IS THE PROPERTY OF MICRO-COAX, INC. AND MAY NOT BE USED OR COPIED WITHOUT THE EXPRESS WRITTEN PERMISSION OF MICRO-COAX, INC.		INITIALS		DATE		MICRO-COAX ® Leading the way in transmission line solutions. Copyright Micro-Coax, Inc.																
		DWN.	JMK	1/4/05																		
		CHKD.	CCF	6/21/11																		
		APPVD.																				
TOLERANCES UNLESS OTHERWISE SPECIFIED		TITLE SMP SOCKET, MITER RIGHT ANGLE, 088/092D CABLE, SPACE GRADE																				
.XX	± .02	ALL DIMENSIONS IN INCHES UNLESS OTHERWISE SPECIFIED. SCREW THDS. TO BE IN ACCORD WITH ANSI B1.1-1989.																				
.XXX	± .005																					
.XXXX	± .0010																					
ANGLES	± 2°																					
		FSCM NO.	SIZE	SCALE	SHEET NO.	DRAWING NO.		REV														
		64639	B	6:1	1 OF 1	SD904214		E														