

MECHANICAL CHARACTERISTICS	
INTERFACE	MIL-STD-348, FIGURE 310-1
IN ACCORDANCE WITH THE INTENT OF SLANT SHEET	MIL-PRF-39012/56 REF.
RECOMMENDED MATING TORQUE	9 IN-LBS. NOM.
COUPLING PROOF TORQUE	15 IN-LBS. MIN.
COUPLING NUT RETENTION	60 LBS. MIN.
FORCE TO ENGAGE	2 IN-LBS. MAX.
FORCE TO DISENGAGE	2 IN-LBS. MIN.
DURABILITY	500 CYCLES MIN.
AXIAL CONTACT RETENTION (FROM INTERFACE)	6 LBS. MIN.
AXIAL CONTACT RETENTION (FROM CABLE)	6 LBS. MIN.
CABLE RETENTION	10 LBS. MIN.
MASS	7.76 GRAMS NOM

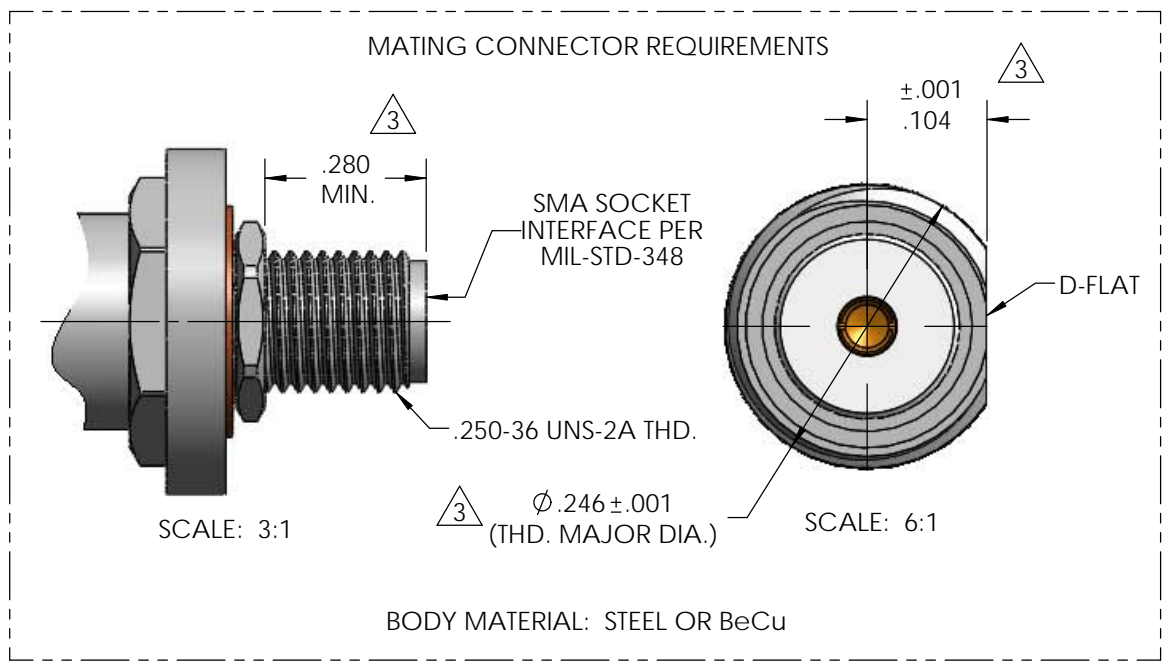
ELECTRICAL CHARACTERISTICS	
IMPEDANCE	50 Ohms NOM.
MAXIMUM FREQUENCY	18 GHz
VSWR DC - 12.4 GHz	1.12:1 MAX.
12.4 - 18 GHz	1.16:1 MAX.
INSERTION LOSS	0.04 \sqrt{f} (GHz) dB MAX.
DIELECTRIC WITHSTANDING VOLTAGE	750 Vrms MIN.
INSULATION RESISTANCE	5000 MegaOhms MIN.
RF LEAKAGE DC - 18 GHz	-90 dB MIN.
CORONA	190 Vrms MIN. @ 70,000 FEET
RF HIGH POTENTIAL	500 Vrms MIN.
CONTACT RESISTANCE (INNER)	4.0 MilliOhms MAX.
CONTACT RESISTANCE (OUTER)	2.0 MilliOhms MAX.

ENVIRONMENTAL CHARACTERISTICS	
OPERATING TEMPERATURE	-62°C TO 165°C
VIBRATION	MIL-STD-202, METHOD 204, CONDITION D
MECHANICAL SHOCK	MIL-STD-202, METHOD 213, CONDITION I
THERMAL SHOCK	MIL-STD-202, METHOD 107, CONDITION B
CORROSION	MIL-STD-202, METHOD 101, CONDITION B, 5%
MOISTURE RESISTANCE	MIL-STD-202, METHOD 106, CONDITION (NO VIBRATION)

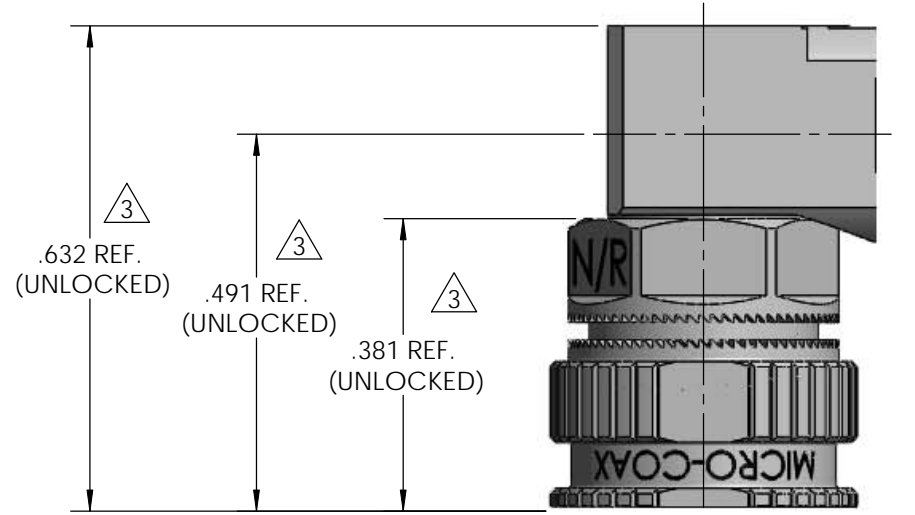
MATERIALS AND FINISH	
COUPLING NUT, LOCKING SLEEVE, CLAMP NUT, BODY	STEEL, CORROSION RESISTANT, PER ASTM-A-582, UNS NO. S30300, PASSIVATE PER ASTM-A-967
CONTACT, CONTACT RING	BERYLLIUM COPPER, ASTM-B-196 GOLD PLATED PER MIL-DTL-45204, OVER NICKEL PLATE PER AMS-QQ-N-290
SNAP RING	BERYLLIUM COPPER, PER ASTM-B-197
INSULATOR(S)	TFE FLUOROCARBON PER ASTM-D-1710
GASKET	SILICONE RUBBER PER ZZ-R-765
SPRING	316BRT STAINLESS STEEL, PASSIVATED PER ASTM-B-967

APPLICATION	
CABLE(S)	088D/092D CABLE
INSTALLATION	PER CONFIGURATOR

THIS DRAWING IS PROPRIETARY AND CONFIDENTIAL.

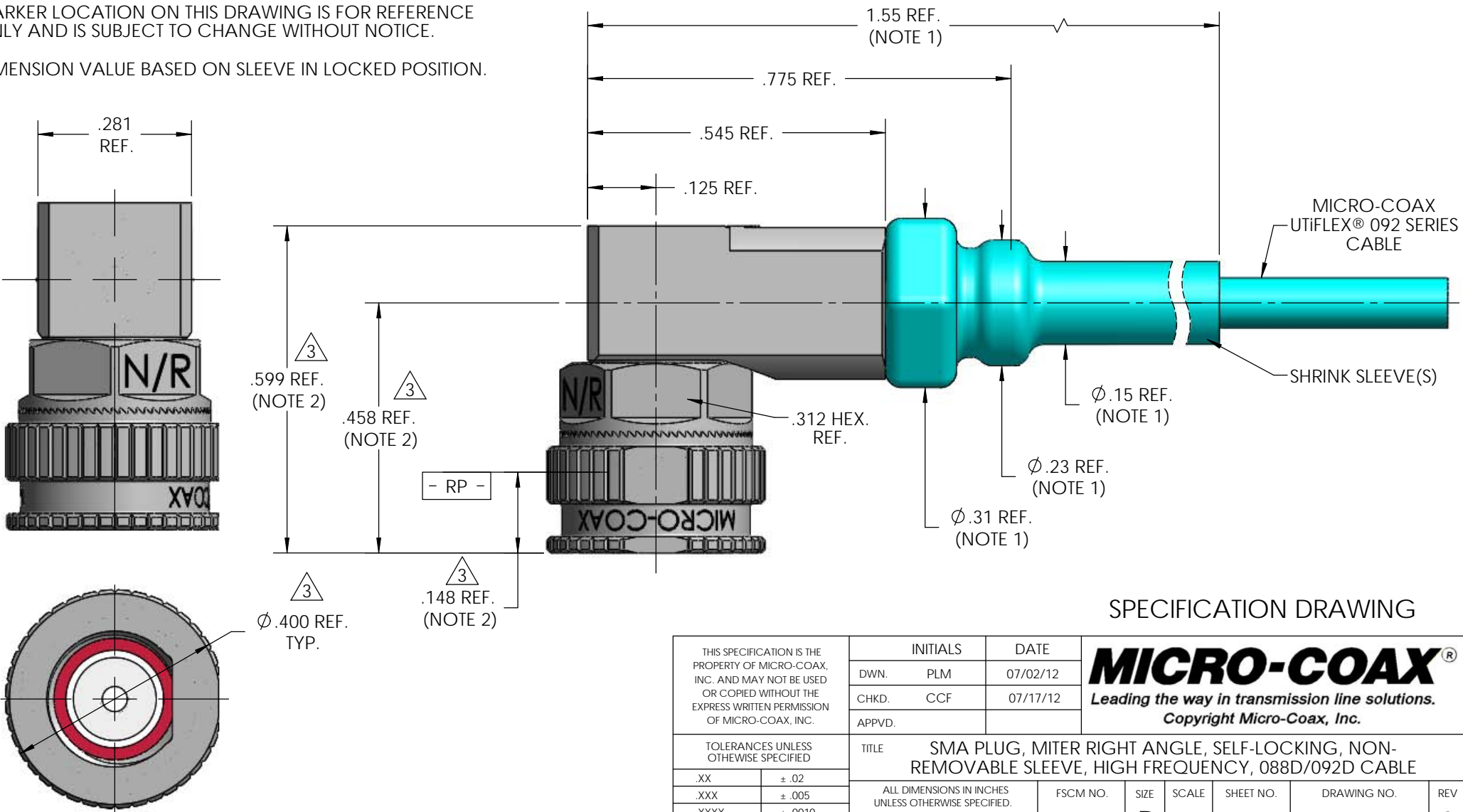


REV	DESCRIPTION	DATE	BY	APPVD	CHKD
1	PRELIMINARY RELEASE	07/20/2012	PLM	RS	CCF
2	ADDED RED STRIPE SPECIFICATION ON COUPLING NUT	9/24/2012	PLM	RS	RS
3	REVISED SMA BHJ BODY DIMENSIONAL REQUIREMENTS; REVISED LOCKING SLEEVE; REMOVED RED STRIPE	6/4/2013	PLM	RS	RS



NOTE:

1. MARKER LOCATION ON THIS DRAWING IS FOR REFERENCE ONLY AND IS SUBJECT TO CHANGE WITHOUT NOTICE.
2. DIMENSION VALUE BASED ON SLEEVE IN LOCKED POSITION.



SPECIFICATION DRAWING

THIS SPECIFICATION IS THE PROPERTY OF MICRO-COAX, INC. AND MAY NOT BE USED OR COPIED WITHOUT THE EXPRESS WRITTEN PERMISSION OF MICRO-COAX, INC.	INITIALS	DATE	MICRO-COAX [®] Leading the way in transmission line solutions. Copyright Micro-Coax, Inc.			
	DWN. PLM	07/02/12				
	CHKD. CCF	07/17/12				
	APPVD.					
TOLERANCES UNLESS OTHERWISE SPECIFIED	TITLE SMA PLUG, MITER RIGHT ANGLE, SELF-LOCKING, NON-REMOVABLE SLEEVE, HIGH FREQUENCY, 088D/092D CABLE					
XX ± .02	ALL DIMENSIONS IN INCHES UNLESS OTHERWISE SPECIFIED. SCREW THDS. TO BE IN ACCORD WITH ANSI B1.1-1989.					
.XXX ± .005						
.XXXX ± .0010						
ANGLES ± 2°						
FSCM NO.	SIZE	SCALE	SHEET NO.	DRAWING NO.	REV	
64639	B	4:1	1 OF 1	SD905207	3	