

Coaxial

# Band Stop Filter

**ZX75BS-125+**

50Ω      110.25 to 139.75 MHz

## The Big Deal

- High rejection
- Stopband (110.25 to 139.75 MHz)
- Connectorized package



CASE STYLE: KD1465

## Product Overview

The ZX75BS-125+ is a band stop filter built in rugged and compact connectorized package. This filter offers good rejection in stopband. It has repeatable performance across lots and consistent performance across temperature. Useful in instrumentation system for industrial applications.

## Key Features

Feature	Advantages
High rejection	ZX75BS-125+ enables the filter to attenuate spurious signals without compromising pass band signal.
Connectorized package	The connectorized package is easy to interface with other devices and well suited for test setups
Application	Can be used in applications such Air-traffic control radar and Avionic systems.



P.O. Box 350166, Brooklyn, New York 11235-0003 (718) 934-4500 Fax (718) 332-4661 The Design Engineers Search Engine  Provides ACTUAL Data Instantly at [minicircuits.com](http://minicircuits.com)

IF/RF MICROWAVE COMPONENTS

**Notes:** 1. Performance and quality attributes and conditions not expressly stated in this specification sheet are intended to be excluded and do not form a part of this specification sheet. 2. Electrical specifications and performance data contained herein are based on Mini-Circuit's applicable established test performance criteria and measurement instructions. 3. The parts covered by this specification sheet are subject to Mini-Circuits standard limited warranty and terms and conditions (collectively, "Standard Terms"); Purchasers of this part are entitled to the rights and benefits contained therein. For a full statement of the Standard Terms and the exclusive rights and remedies thereunder, please visit Mini-Circuits' website at [www.minicircuits.com/MCLStore/terms.jsp](http://www.minicircuits.com/MCLStore/terms.jsp).

For detailed performance specs  
& shopping online see web site

# Coaxial Band Stop Filter

50Ω 110.25 to 139.75 MHz

## ZX75BS-125+



CASE STYLE: KD1465

### Features

- High rejection
- Fast roll-off
- Connectorized package

Connectors	Model	Price	Qty.
SMA-MF	ZX75BS-125-S+	\$69.95 ea.	(1-9)

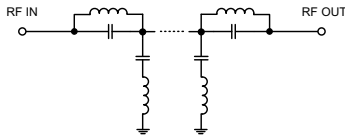
### Electrical Specifications at 25°C

Parameter		F#	Frequency (MHz)	Min.	Typ.	Max.	Unit
Pass Band, Lower	Insertion Loss	DC-F1	DC - 84	-	0.6	1.5	dB
	VSWR	DC-F1	DC - 84	-	1.2	1.6	:1
Stop Band	Rejection	F4-F5	110.25 - 139.75	30	45	-	dB
	VSWR	F4-F5	110.25 - 139.75	-	11	-	:1
Pass Band, Upper	Insertion Loss	F2-F3	196 - 1000	-	0.6	1.5	dB
	VSWR	F2-F3	196 - 1000	-	1.3	1.8	:1

### Applications

- Air-traffic control radar system
- Avionic systems
- Lab use

### Functional Schematic



### Maximum Ratings

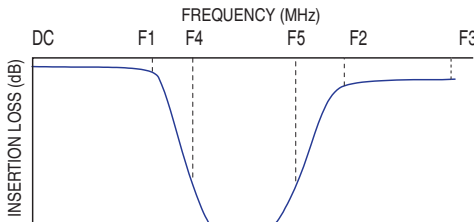
Operating Temperature	-40°C to 85°C
Storage Temperature	-55°C to 100°C
RF Power Input	250 mW max.

Permanent damage may occur if any of these limits are exceeded.

### Typical Performance Data at 25°C

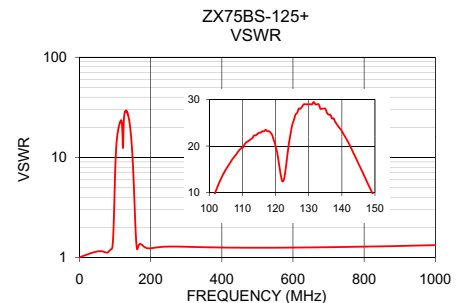
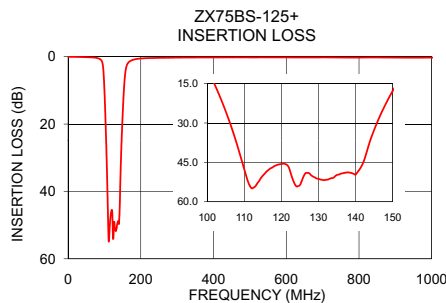
Frequency (MHz)	Insertion Loss (dB)	VSWR (:1)
1.00	0.02	1.01
60.00	0.18	1.16
84.00	0.52	1.16
90.00	0.89	1.22
96.00	2.71	2.08
98.00	5.26	3.65
102.00	15.39	10.43
106.00	29.54	16.11
110.25	49.01	19.76
125.00	53.60	24.48
139.75	49.58	23.49
144.00	36.37	17.75
146.00	29.13	14.74
150.00	17.77	8.77
154.00	9.31	4.05
160.00	3.15	1.36
170.00	1.37	1.37
196.00	0.58	1.23
500.00	0.22	1.25
1000.00	0.26	1.33

### Typical Frequency Response



+ RoHS compliant in accordance with EU Directive (2002/95/EC)

The +Suffix has been added in order to identify RoHS Compliance. See our web site for RoHS Compliance methodologies and qualifications.



**Mini-Circuits®**  
ISO 9001 ISO 14001 AS 9100 CERTIFIED

P.O. Box 350166, Brooklyn, New York 11235-0003 (718) 934-4500 Fax (718) 332-4661 The Design Engineers Search Engine [www.minicircuits.com](http://www.minicircuits.com) Provides ACTUAL Data Instantly at [minicircuits.com](http://minicircuits.com)

IF/RF MICROWAVE COMPONENTS

For detailed performance specs & shopping online see web site

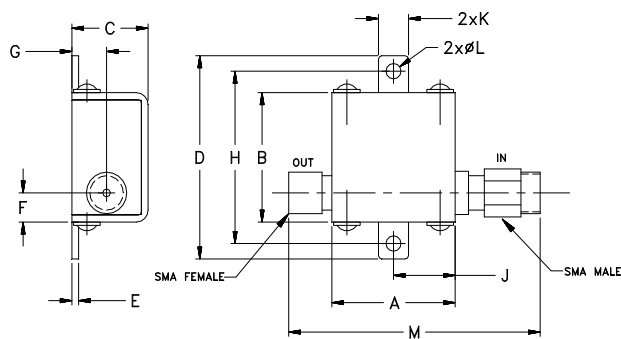
**Notes:** 1. Performance and quality attributes and conditions not expressly stated in this specification sheet are intended to be excluded and do not form a part of this specification sheet. 2. Electrical specifications and performance data contained herein are based on Mini-Circuit's applicable established test performance criteria and measurement instructions. 3. The parts covered by this specification sheet are subject to Mini-Circuits standard limited warranty and terms and conditions (collectively, "Standard Terms"); Purchasers of this part are entitled to the rights and benefits contained therein. For a full statement of the Standard Terms and the exclusive rights and remedies thereunder, please visit Mini-Circuits' website at [www.minicircuits.com/MCLStore/terms.jsp](http://www.minicircuits.com/MCLStore/terms.jsp).

REV. OR  
M132445  
ZX75BS-125+  
EDU1302  
URJ  
110817  
Page 2 of 3

Coaxial Connections

INPUT	SMA-Male
OUTPUT	SMA-Female

Outline Drawing



Outline Dimensions ( inch mm )

A	B	C	D	E	F	
.74	.75	.46	1.18	.04	.17	
18.80	19.05	11.68	29.97	1.02	4.32	
G	H	J	K	L	M	wt.
.21	1.00	.37	.18	.09	1.51	grams
5.33	25.40	9.40	4.57	2.29	38.4	21.4