

## HyperLink Wireless 900 MHz 13 dBi Horizontally Polarized 120° Degree Sector Panel Antenna Model: HG913HSP-120

### Applications and Features

- Applications:**
- 900MHz ISM Band
  - Wireless LAN systems
  - Wireless Video Links
  - Non Line of Sight (NLOS)
  - 900MHz Cellular
  - Base Station Equipment
  - 900MHz Service Provider "cell" sites

- Features:**
- Horizontal Polarized with Superior performance
  - All weather operation
  - 120° beam-width
  - 15° Down-Tilt Mounting Bracket
  - Includes Mast Mounting Hardware
  - Integral N-Female Connector
  - RoHS Compliant



### Description

#### Superior Performance

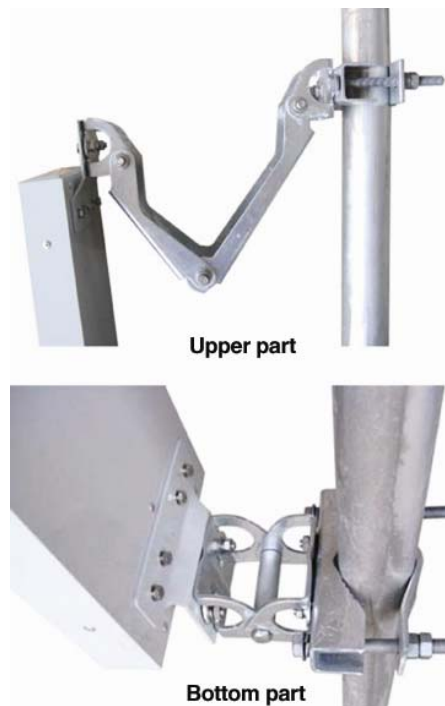
The HyperGain® HG913HSP-120 Sector Panel Antenna provides 13 dBi gain, Horizontally Polarized, with a wide 120° beam-width. It is a professional quality "cell site" antenna designed primarily for service providers in the 900MHz band. It is ideally suited for 900MHz ISM and GSM bands. Typical applications include 900MHz Wireless LAN, SCADA, Wireless Video Links and 900MHz Cellular.

#### Rugged and Weatherproof

This antenna features a heavy-duty plastic radome for all-weather operation. The mounting system adjusts from 0 to 15 degrees down tilt.

#### Ideal for 900 MHz Wireless Service Provider "Cell" Sites

This sector antenna is an ideal choice for Wireless Service Internet Provider "cell" sites since the cell size can be easily determined by adjusting the down-tilt angle. The 120° beam-width is ideal for covering large service areas.



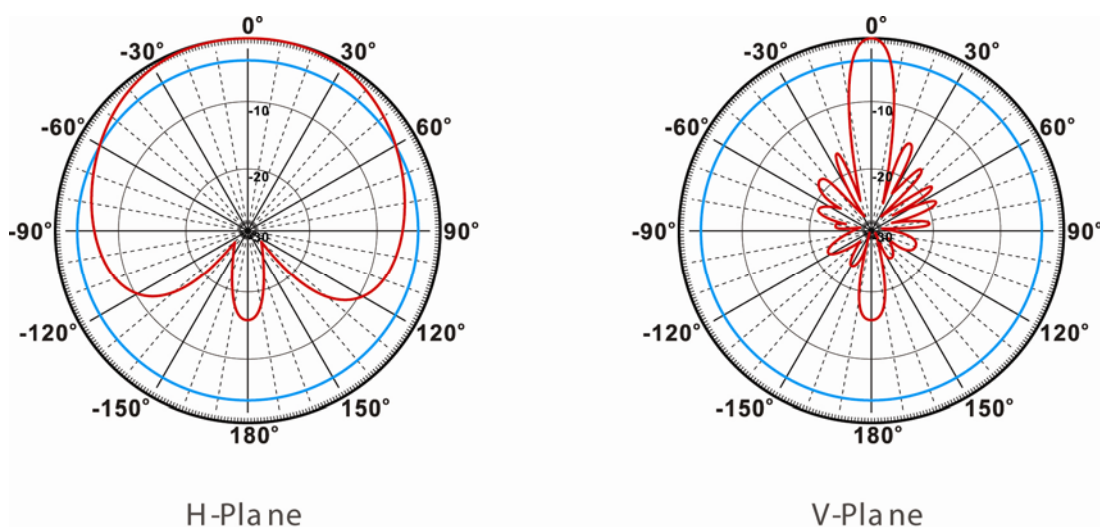
## Specifications

Frequency	900-930 MHz
Gain	13 dBi
Horizontal Beam Width	120 degrees
Vertical Beam Width	14 degrees
Impedance	50 Ohm
Max. Input Power	250 Watts
VSWR	< 2.0:1 avg.
Connector	7/16 DIN (NF Adapter available)
Lightning Protection	DC Short
Weight	16.3 lbs. ( 7.4 Kg)
Dimensions	70.86 x 7.88 x 1.96 inches (1800 x 200 x 70 mm)
Radome Material	UV-Inhibited Polymer
Operating Temperature	-40° C to 65° C (-40° F to 149° F)
Mounting	1.96" (50 mm) to 2.75" (70 mm) O.D. pipe max.
Polarization	Horizontal
Down tilt (mech)	0 to 15 degrees (adjustable)
RoHS Compliant	Yes

### Wind Loading Data: Rated to 210km/h

Wind Speed (MPH)	Loading
100	147 lb.
125	227 lb.

### RF Antenna Gain Patterns



### Guaranteed Quality

This product is backed by L-Com's Limited Warranty