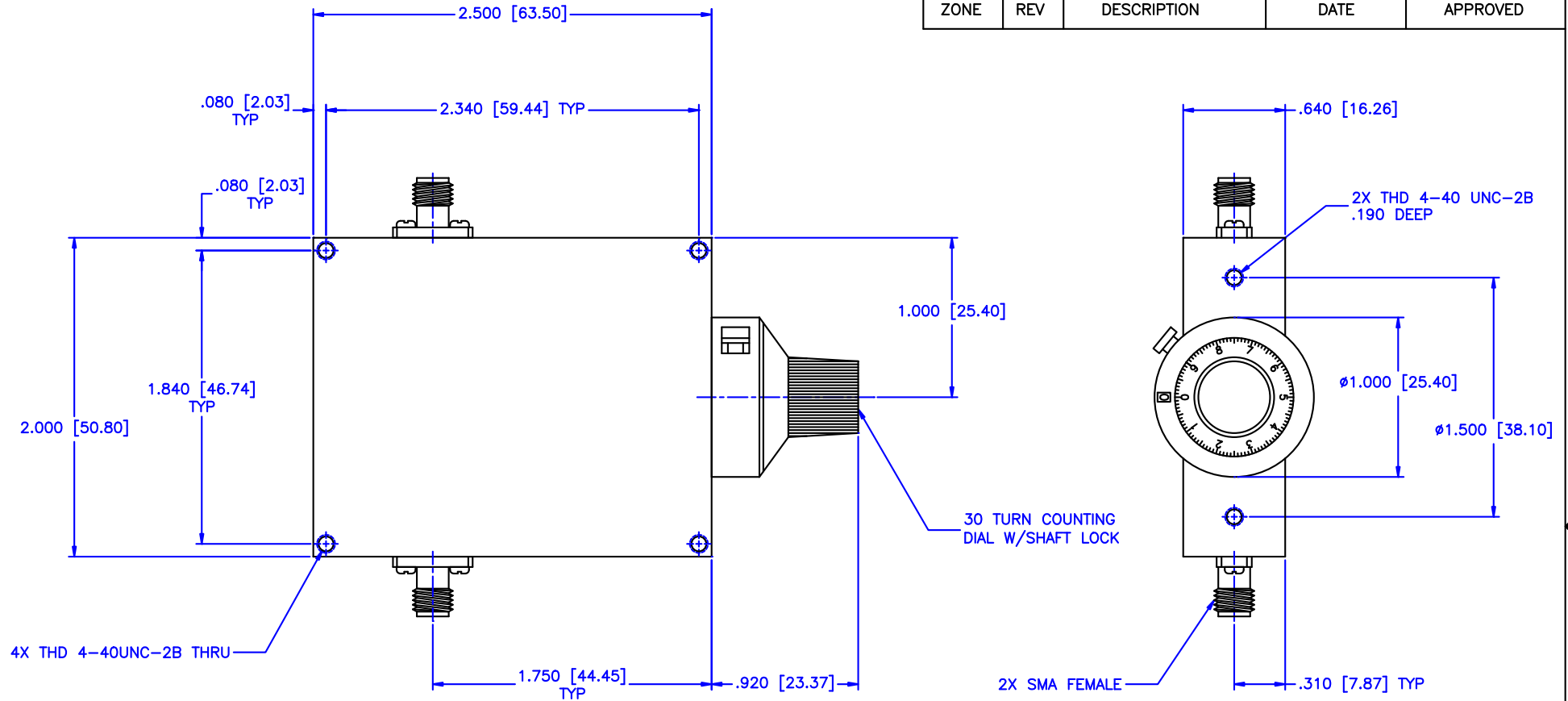


REVISIONS				
ZONE	REV	DESCRIPTION	DATE	APPROVED



SPECIFICATION:

Frequency Range: 11.7–18 GHz

Attenuation: 30dB

Insertion Loss: 0.5 Max.

VSWR: 1.50:1 Max.

RF Power: 7 W Average, 3kW Peak

Environmental:

Temperature range: –55°C to +110°C

Shock: 15 G's, 11mS, 1/2 sine

Vibration: 3 G's overall

Altitude: 40,000 ft. Survival

25,000ft Operating

MATERIAL: <div style="border: 1px solid black; height: 100px; width: 100%;"></div>		MCL MICROWAVE COMMUNICATIONS LABORATORIES INC. 7255 30TH AVE. N. SAINT PETERSBURG, FL 33710 TEL: (727) 344-6254 FAX: (727) 381-6116 http://WWW.MCLI.COM		SCALE:	N/A
		UNLESS OTHERWISE SPECIFIED: TOLERANCES IN (INCHES) OR [mm] (MILLIMETERS) FRACTIONS: $\pm 1/64$ DECIMALS: ± 0.01 ± 0.005 ANGLE: $\pm 1/2^\circ$		SHEET:	N/A
DRAWN: Paiboon Luekhamhan		DATE: 11-18-2001		DRAWING TITLE: CONTINUOUSLY VARIABLE ATTENUATOR WITH DIAL	
APPROVED: T. Nguyen		DATE: 11-18-2001		PART NO. CVA12-30/D	
THIRD ANGLE PROJECTION 		CAGE CODE: 0D2L5		SIZE: A	REV: N/A
				DWG NO. 85442	
				DO NOT SCALE THE DRAWING	