



Electrical specifications

Center Frequency: 1950 MHz
Bandwidth: 60 MHz
Input / Output Impedance: 50 Ohms
Passband: 1920-1980 MHz
Passband Insertion Loss: 1920-1980 MHz 2.4 dB
Passband Ripple: 1920-1980 MHz 0.9 dB
Passband Return Loss: 1920–1980 MHz 10.0 dB
Rejection: 1900 MHz 15.0 dB
Rejection 2: 2000 MHz 15.0 dB
Rejection 3: 2110–2170 MHz 35.0 dB
Power Handling: 2 Watt max.

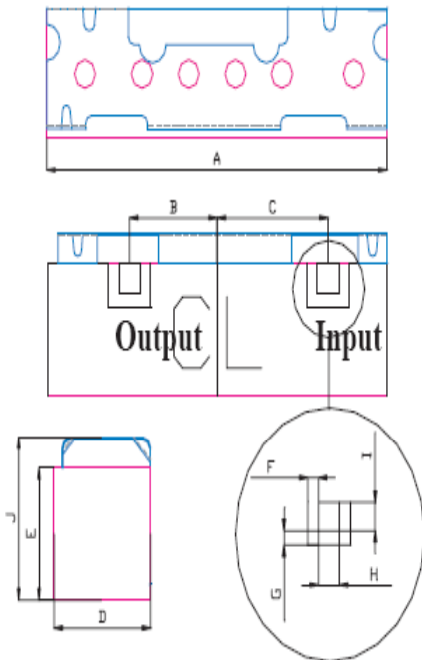
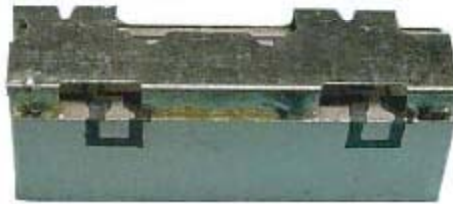
Mechanical

Mounting Method: SMT
Dimensions: 16.42 x 6.1 x 4.85 mm

Environmental

Operating Temperature: 40°C to +85°C
Storage Temperature: -50°C to +90°C

This product is RoHs compliant.



Dim	Nominal (mm)	Tolerance (mm) +/- or max
A	16.42	max
B	4.2	0.13
C	5.3	0.13
D	4.85	max
E	4.9	0.13
F	0.51	0.13
G	0.51	0.13
H	1.02	0.13
I	1.02	0.13
J	6.1	max



Response Plot:

