



0 to 20 dB Rotary Continuously Variable Attenuator, SMA Female
To SMA Female Rated To 5 Watts From 8 GHz To 12.4 GHz

TECHNICAL DATA SHEET

PE7065-8

Configuration

Design	Continuously Variable, Bidirectional Attenuator
Connector 1	SMA Female
Connector 2	SMA Female
Body Material and Plating	Aluminum

Electrical Specifications Values at 25°C, sea level

Description	Minimum	Typical	Maximum	Units
Frequency Range	8		12.4	GHz
Impedance		50		Ohms
Attenuation Value		20		dB
Step Type		Rotary		
Input Power			5	Watts
Peak Power			3	KWatts
VSWR			1.7:1	

Specifications by Frequency

Description	F1	F2	F3	F4	F5	Units
Insertion Loss	0.75					dB

Mechanical Specifications

Temperature

Operating Range	-65 to +125 deg C
-----------------	-------------------

Size

Length	4.5 in [114.3 mm]
Width	4 in [101.6 mm]
Height	4 in [101.6 mm]

Connectors

Description	Connector 1	Connector 2
Type	SMA Female	SMA Female

Compliance Certifications (visit www.Pasternack.com for current document)

Not RoHS Compliant	
REACH Compliant	06/18/2012

Click the following link (or enter part number in "SEARCH" on website) to obtain additional part information including price, inventory and certifications: [0 to 20 dB Rotary Continuously Variable Attenuator, SMA Female To SMA Female Rated To 5 Watts From 8 GHz To 12.4 GHz PE7065-8](#)



0 to 20 dB Rotary Continuously Variable Attenuator, SMA Female To SMA Female Rated To 5 Watts From 8 GHz To 12.4 GHz

TECHNICAL DATA SHEET

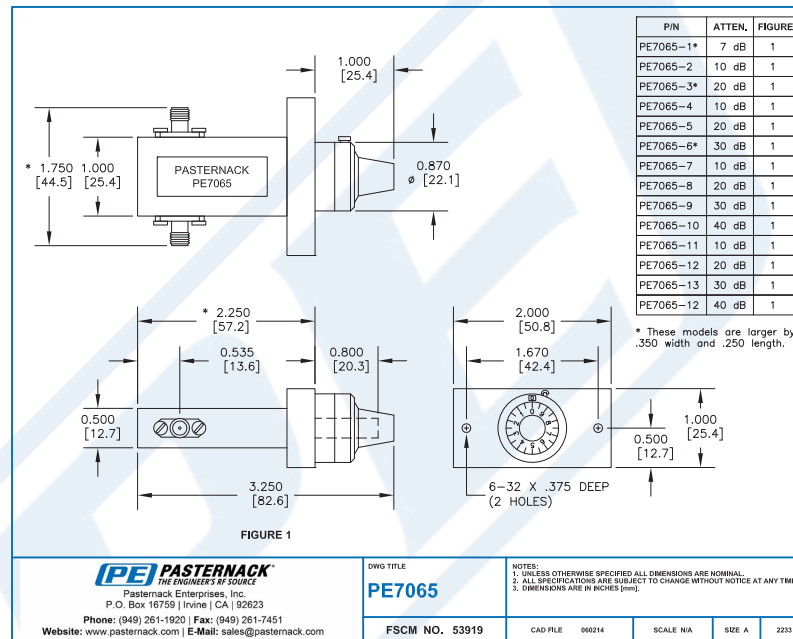
PE7065-8

Plotted and Other Data

Notes:

- Values at 25 °C, sea level

Outline Drawing



0 to 20 dB Rotary Continuously Variable Attenuator, SMA Female To SMA Female Rated To 5 Watts From 8 GHz To 12.4 GHz from Pasternack Enterprises has same day shipment for domestic and International orders. Our RF, microwave and millimeter wave products maintain a 99% availability and are part of the broadest selection in the industry.

Click the following link (or enter part number in "SEARCH" on website) to obtain additional part information including price, inventory and certifications: [0 to 20 dB Rotary Continuously Variable Attenuator, SMA Female To SMA Female Rated To 5 Watts From 8 GHz To 12.4 GHz PE7065-8](http://www.pasternack.com/20db-continuously-variable-sma-female-sma-female-5-watts-attenuator-pe7065-8-p.aspx)

URL: <http://www.pasternack.com/20db-continuously-variable-sma-female-sma-female-5-watts-attenuator-pe7065-8-p.aspx>

The information contained in this document is accurate to the best of our knowledge and representative of the part described herein. It may be necessary to make modifications to the part and/or the documentation of the part, in order to implement improvements. Pasternack reserves the right to make such changes as required. Unless otherwise stated, all specifications are nominal. Pasternack does not make any representation or warranty regarding the suitability of the part described herein for any particular purpose, and Pasternack does not assume any liability arising out of the use of any part or documentation.