

DATA SHEET

PS094-315: Voltage Controlled Phase Shifter **700–1200 MHz**

Features

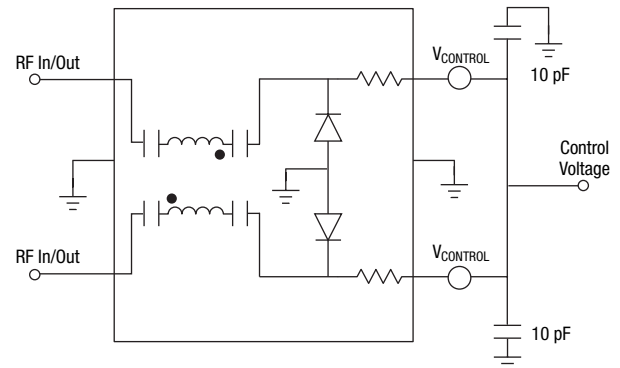
- 700–1200 MHz frequency band
- 80–110-degree phase shift range
- 1.7 dB insertion loss variation
- 0–12 V control voltage range
- Specified 33 dBm IP3 @ 900 MHz
- Small footprint LGA package
- Lead (Pb)-free and RoHS-compliant

Description

The PS094-315 is a voltage controlled phase shifter that employs a monolithic quadrature hybrid and a pair of selected silicon varactor diodes to achieve 100-degree phase shift and low insertion loss. The PS094-315 is packaged in the small outline LGA (Land Grid Array) surface mount package with the internal elements affixed to an organic BT substrate.

NEW

Skyworks offers lead (Pb)-free, RoHS (Restriction of Hazardous Substances)-compliant packaging.

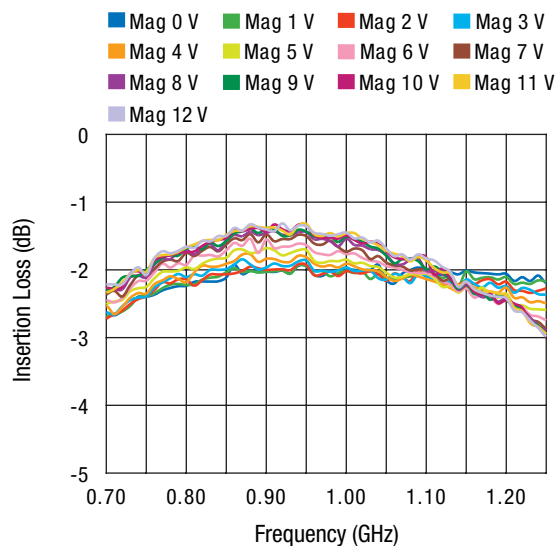

Connection Diagram

Operating Characteristics at 25 °C

$Z_0 = 50 \Omega$, unless otherwise noted

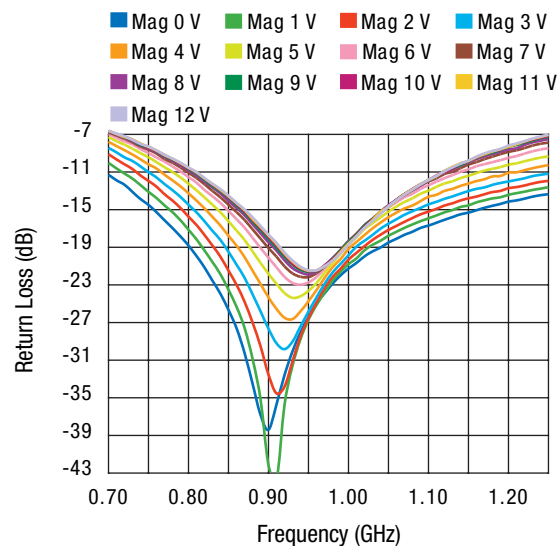
Parameter	Condition	Frequency	Min.	Typ.	Max.	Unit
Phase shift	At F_0 , $V_{\text{CONTROL}} = 12 \text{ V}$	925–960 MHz	80	100		Deg.
Control voltage (V_{CONTROL}) range			0		12	V
Control current	$V_{\text{CONTROL}} = 12 \text{ V}$				1	μA
Insertion loss in BW	$V_{\text{CONTROL}} = 12 \text{ V}$	925–960 MHz			3.2	dB
I.L. deviation in BW	$V_{\text{CONTROL}} = 0\text{--}12 \text{ V}$	925–960 MHz			2	dB
Return loss in BW		700–1200 MHz			-7	dB
IM3	$P_{\text{IN}} = 8 \text{ dBm}$, 900/905 MHz, $V_{\text{CONTROL}} = 0 \text{ V}$				-50	dBc
IP3	Derived from IM3		33			dBm

Typical Performance Data

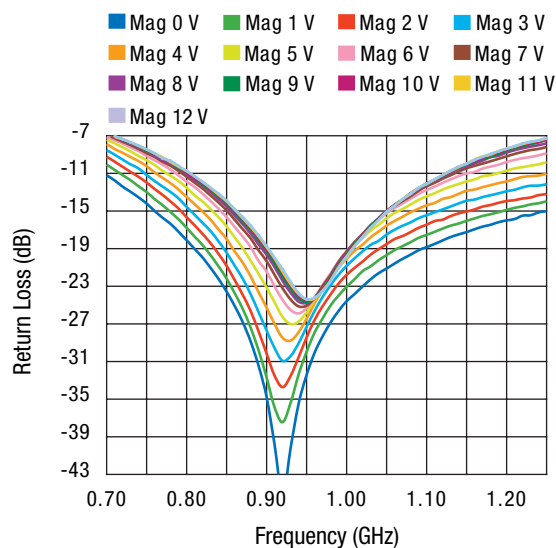
$Z_0 = 50 \Omega$, unless otherwise noted



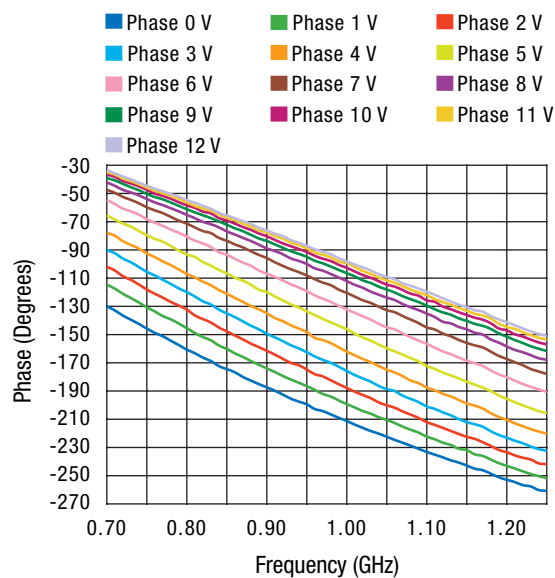
**Magnitude S_{21} vs.
Frequency and Control Voltage**



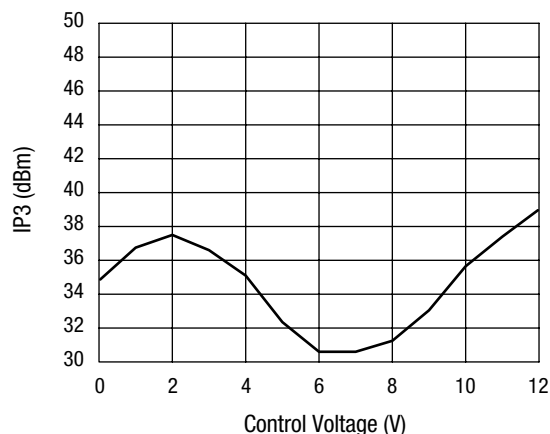
**Magnitude S_{22} vs.
Frequency and Control Voltage**



**Magnitude S_{11} vs.
Frequency and Control Voltage**



**Phase S_{21} vs.
Frequency and Control Voltage**



IP3 vs. Control Voltage

$RF_1 = 0.900 \text{ GHz}$, $RF_2 = 0.905 \text{ GHz}$ @ 8 dBm

Absolute Maximum Ratings

Characteristic	Value
RF input power	20 dBm
Control voltage	15 V
Operating temperature	-40 °C to +85 °C
Storage temperature	-65 °C to +150 °C
Electrostatic discharge	HBM 1 B

Performance is guaranteed only under the conditions listed in the specifications table and is not guaranteed under the full range(s) described by the Absolute Maximum specifications. Exceeding any of the absolute maximum/minimum specifications may result in permanent damage to the device and will void the warranty.

CAUTION: Although this device is designed to be as robust as possible, ESD (Electrostatic Discharge) can damage this device. This device must be protected at all times from ESD. Static charges may easily produce potentials of several kilovolts on the human body or equipment, which can discharge without detection. Industry-standard ESD precautions must be employed at all times.

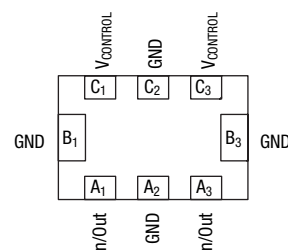
Recommended Solder Reflow Profiles

Refer to the [“Recommended Solder Reflow Profile”](#) Application Note.

Tape and Reel Information

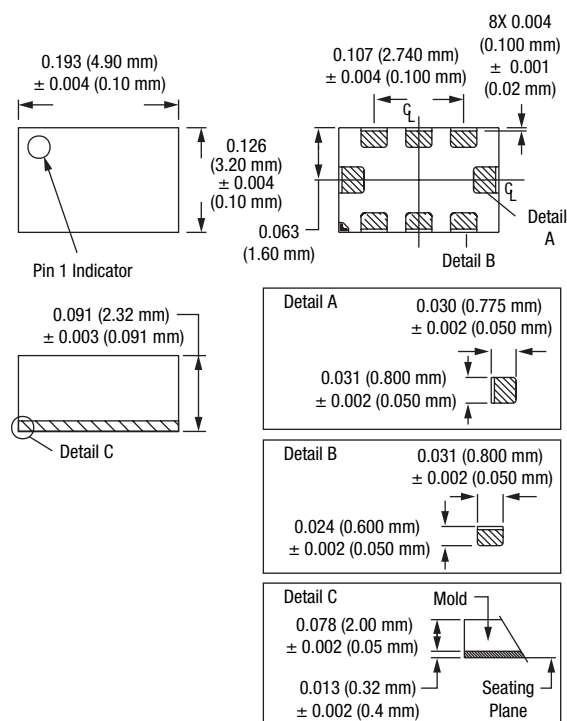
Refer to the [“Discrete Devices and IC Switch/Attenuators Tape and Reel Package Orientation”](#) Application Note.

Pin Out (Bottom View)



Terminal No.	Terminal Name
A ₁ (Pin 1)	In/Out
A ₂	GND
A ₃	In/Out
B ₁	GND
B ₃	GND
C ₁	V _{CONTROL}
C ₂	GND
C ₃	V _{CONTROL}

-315



Copyright © 2002, 2003, 2004, 2005, 2006, Skyworks Solutions, Inc. All Rights Reserved.

Information in this document is provided in connection with Skyworks Solutions, Inc. ("Skyworks") products or services. These materials, including the information contained herein, are provided by Skyworks as a service to its customers and may be used for informational purposes only by the customer. Skyworks assumes no responsibility for errors or omissions in these materials or the information contained herein. Skyworks may change its documentation, products, services, specifications or product descriptions at any time, without notice. Skyworks makes no commitment to update the materials or information and shall have no responsibility whatsoever for conflicts, incompatibilities, or other difficulties arising from any future changes.

No license, whether express, implied, by estoppel or otherwise, is granted to any intellectual property rights by this document. Skyworks assumes no liability for any materials, products or information provided hereunder, including the sale, distribution, reproduction or use of Skyworks products, information or materials, except as may be provided in Skyworks Terms and Conditions of Sale.

THE MATERIALS, PRODUCTS AND INFORMATION ARE PROVIDED "AS IS" WITHOUT WARRANTY OF ANY KIND, WHETHER EXPRESS, IMPLIED, STATUTORY, OR OTHERWISE, INCLUDING FITNESS FOR A PARTICULAR PURPOSE OR USE, MERCHANTABILITY, PERFORMANCE, QUALITY OR NON-INFRINGEMENT OF ANY INTELLECTUAL PROPERTY RIGHT; ALL SUCH WARRANTIES ARE HEREBY EXPRESSLY DISCLAIMED. SKYWORKS DOES NOT WARRANT THE ACCURACY OR COMPLETENESS OF THE INFORMATION, TEXT, GRAPHICS OR OTHER ITEMS CONTAINED WITHIN THESE MATERIALS. SKYWORKS SHALL NOT BE LIABLE FOR ANY DAMAGES, INCLUDING BUT NOT LIMITED TO ANY SPECIAL, INDIRECT, INCIDENTAL, STATUTORY, OR CONSEQUENTIAL DAMAGES, INCLUDING WITHOUT LIMITATION, LOST REVENUES OR LOST PROFITS THAT MAY RESULT FROM THE USE OF THE MATERIALS OR INFORMATION, WHETHER OR NOT THE RECIPIENT OF MATERIALS HAS BEEN ADVISED OF THE POSSIBILITY OF SUCH DAMAGE.

Skyworks products are not intended for use in medical, lifesaving or life-sustaining applications, or other equipment in which the failure of the Skyworks products could lead to personal injury, death, physical or environmental damage. Skyworks customers using or selling Skyworks products for use in such applications do so at their own risk and agree to fully indemnify Skyworks for any damages resulting from such improper use or sale.

Customers are responsible for their products and applications using Skyworks products, which may deviate from published specifications as a result of design defects, errors, or operation of products outside of published parameters or design specifications. Customers should include design and operating safeguards to minimize these and other risks. Skyworks assumes no liability for applications assistance, customer product design, or damage to any equipment resulting from the use of Skyworks products outside of stated published specifications or parameters.

Skyworks, the Skyworks symbol, and "Breakthrough Simplicity" are trademarks or registered trademarks of Skyworks Solutions, Inc., in the United States and other countries. Third-party brands and names are for identification purposes only, and are the property of their respective owners. Additional information, including relevant terms and conditions, posted at www.skyworksinc.com, are incorporated by reference.