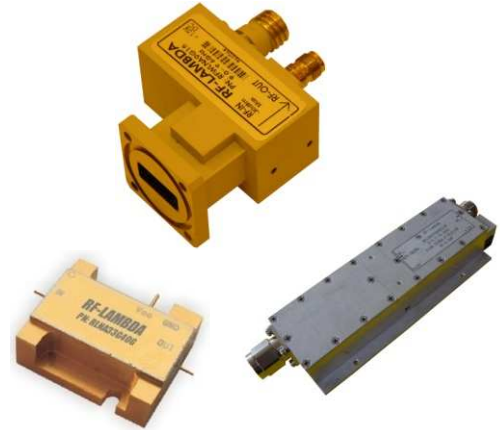


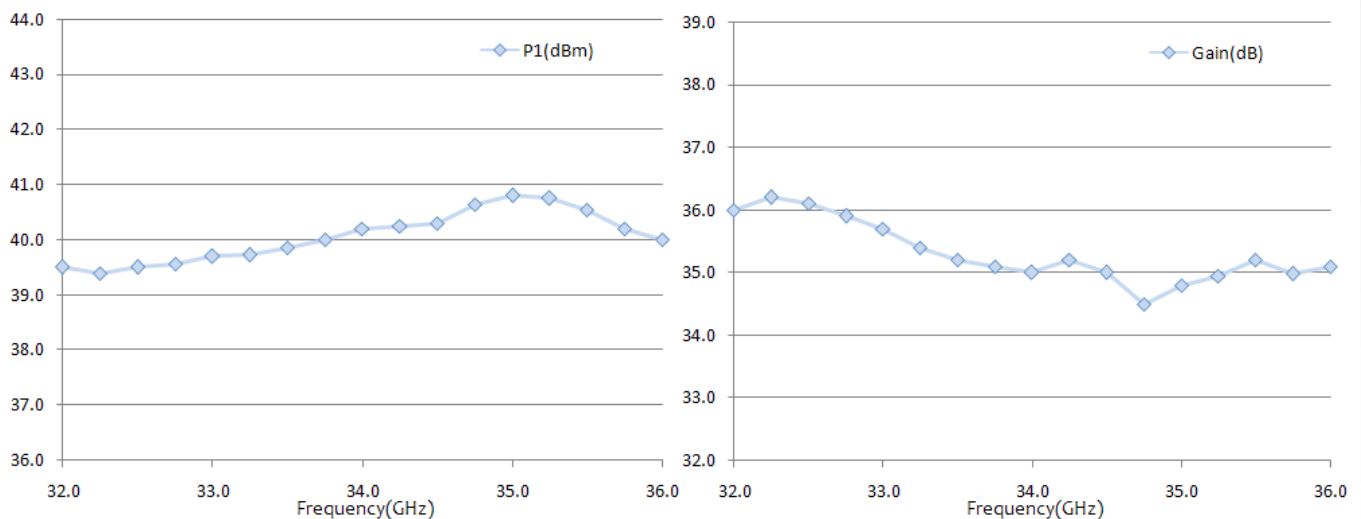


Wide Band Power Amplifier 32GHz~36GHz

- High Gain 35dB
- Applicable for base station, repeaters of cellular network
- Aerospace and military application
- LMDS multi-carrier operation
- High Peak to average handle capability
- High Linearity and low noise figure
- All specifications can be modified upon request



Electrical Specifications			
Frequency Range:	32GHz~36GHz	P1dB	+40dBm typ.
Noise Figure:	7.0dB typ. 9.0dB Max	Out IP3:	+48dBm
Gain:	35dB typ.	Output VSWR:	2.5 : 1
Flatness:	+/-1.2dB	Input VSWR:	2.5 : 1
Input Power	+5dBm (Max)	DC Voltage:	+12V/+15VDC /22A max
Mechanical and Environmental Specifications			
Operation Temperature:	-40°C to 85°C base plate	Mechanical shock	30G, 11mSec half sin wave, 3 axis both directions
Vibration:	14.2g RMS (15-2000Hz) functional	Humidity	95% relative humidity, 65°C 96Hour
	16.2g RMS (15-2000Hz) endurance, 1 hour per axis	MTBF	50000 hour min
Connectors:	2.92mm (K) or WR28	Case:	Conductive no paint
	Supply RFI filter solder Pin	Dimension Size (L x W x H):	4.34"×3.00"×1.18" (110×76×30)



Wide Band Power Amplifier 32GHz~36GHz

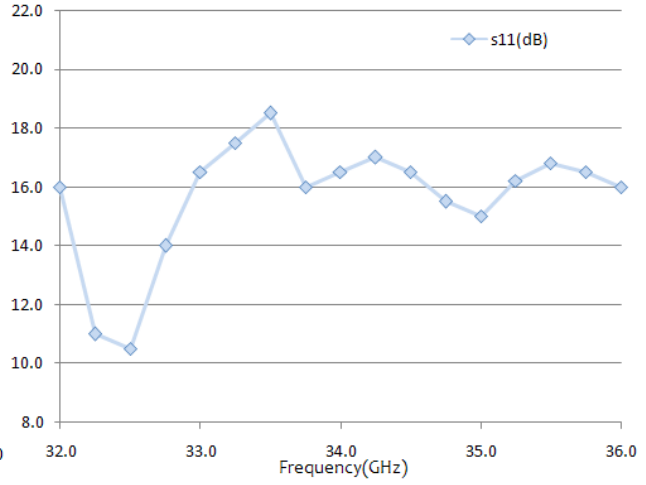
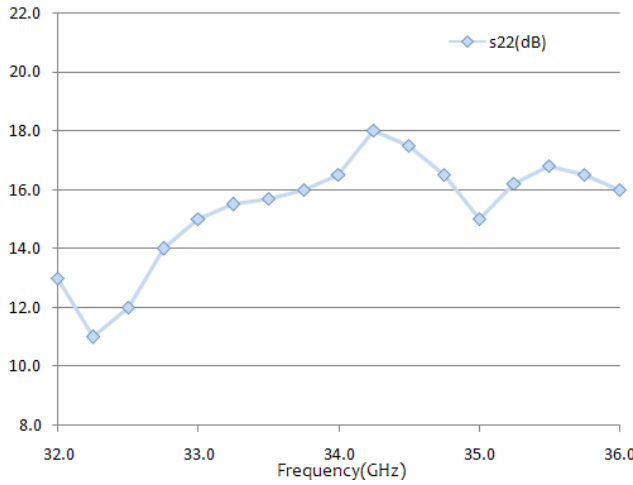


RF-LAMBDA

The power beyond expectations

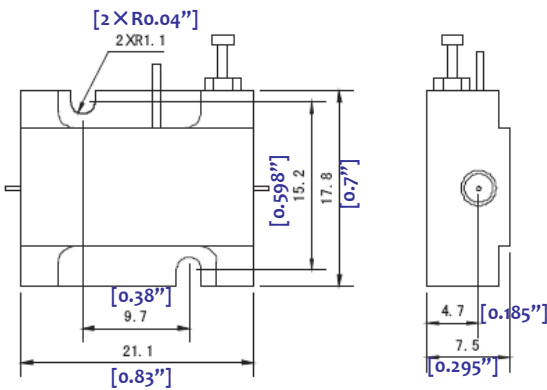
RFLNPA32G36GB

Wide Band Power Amplifier 32GHz~36GHz



AC model: 110VAC or 220VAC

Heat Sink required during operation.



Drop-in model



Drop-in model

