

# ADAPTERS, BETWEEN SERIES DC - 18 GHz TYPE N / SMA BULKHEAD MOUNT



MODELS: 5203, 5207, 5216 & 5217

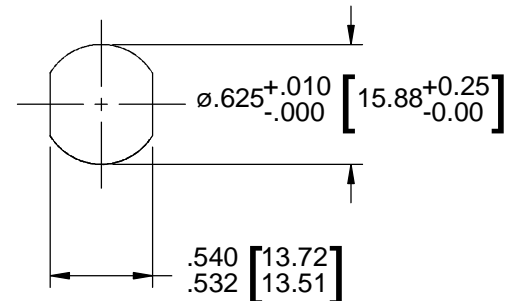
## SPECIFICATIONS:

### Electrical:

Frequency Range \_\_\_\_\_ DC - 18.0 GHz  
VSWR  
DC - 4 GHz \_\_\_\_\_ 1.04:1 Max.  
4 - 8 GHz \_\_\_\_\_ 1.07:1 Max.  
8 - 18 GHz \_\_\_\_\_ 1.12:1 Max.  
Impedance \_\_\_\_\_ 50 Ohms  
Operating Temp Range \_\_\_\_\_ -65°C to +125°C

### Mechanical:

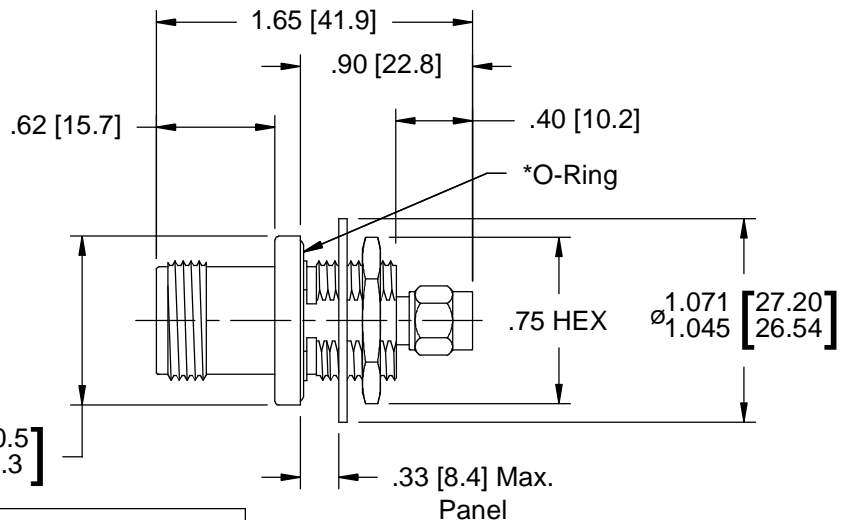
Connectors \_\_\_\_\_ Passivated Stainless Steel  
(Mates with MIL-STD-348)  
Conductors \_\_\_\_\_ Gold Plated Beryllium Copper  
Nut & Washer \_\_\_\_\_ Passivated Stainless Steel  
O-Ring \_\_\_\_\_ Silicone Rubber



Recommended Panel Configuration

Model Number: **5207**

Type N Female / SMA Male  
No O-Ring Included



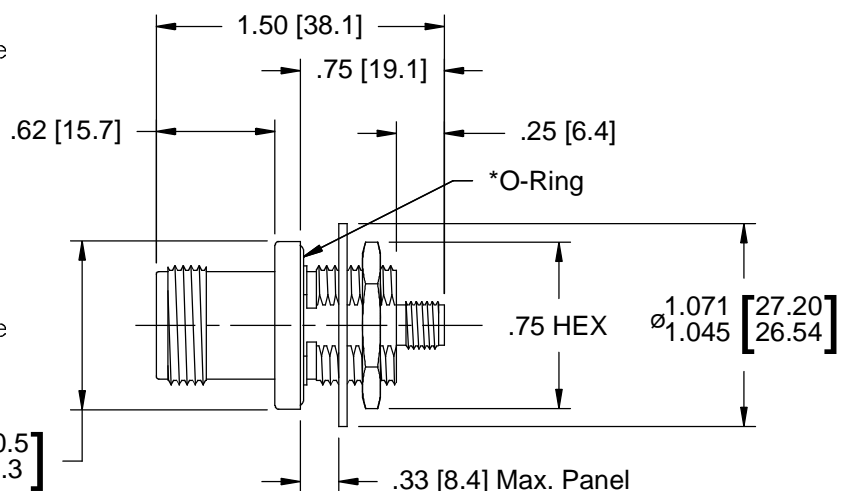
Model Number: **5216**

Type N Female / SMA Male  
\*Includes O-Ring

$\varnothing .88^{+.02}_{-.01}$  [22.4<sup>+0.5</sup><sub>-0.3</sub>]

Model Number: **5203**

Type N Female / SMA Female  
No O-Ring Included



Model Number: **5217**

Type N Female / SMA Female  
\*Includes O-Ring

$\varnothing .88^{+.02}_{-.01}$  [22.4<sup>+0.5</sup><sub>-0.3</sub>]

Panel Nut, Lock Washer and O-Ring are Shipped Unassembled.

Note: Dimensions in Brackets are Expressed in Millimeters and are for Reference Only.  
Design specifications are subject to change without notice.  
Contact factory for technical specifications before purchasing or use.

5207; REV K

300 Dino Drive • Ann Arbor, MI 48103-9457 U.S.A. • 888-244-6638 or 734-426-5553 • FAX 734-426-5557 • inmet.apitech.com