



# Directional 30 dB SMA Coupler From 2 GHz to 4 GHz Rated To 50 Watts

## TECHNICAL DATA SHEET

PE2202-30

### Configuration

Connector 1	SMA Female
Connector 2	SMA Female
Coupled Connectors	SMA Female
Design	Directional Coupler

### Electrical Specifications (Values at 25°C, sea level)

Description	Minimum	Typical	Maximum	Units
Frequency Range	2		4	GHz
Directivity	25			dB
Impedance		50		Ohms
Insertion Loss			0.2	dB
Input Power			50	Watts
Input VSWR			1.1:1	
Coupling Value		30		dB
Coupling Tolerance			± 1.25	dB
Frequency Sensitivity		0.75		dB

### Mechanical Specifications

#### Size

Length	3.14 in [79.76 mm]
Width/Dia.	0.4 in [10.16 mm]
Height	1.24 in [31.5 mm]

#### Connectors

Description	Connector 1	Connector 2	Coupled Connectors
Type	SMA Female	SMA Female	SMA Female

### Compliance Certifications (visit [www.Pasternack.com](http://www.Pasternack.com) for current document)

Not RoHS Compliant	
REACH Compliant	06/18/2012

Click the following link (or enter part number in "SEARCH" on website) to obtain additional part information including price, inventory and certifications: [Directional 30 dB SMA Coupler From 2 GHz to 4 GHz Rated To 50 Watts PE2202-30](#)



## Directional 30 dB SMA Coupler From 2 GHz to 4 GHz Rated To 50 Watts

### TECHNICAL DATA SHEET

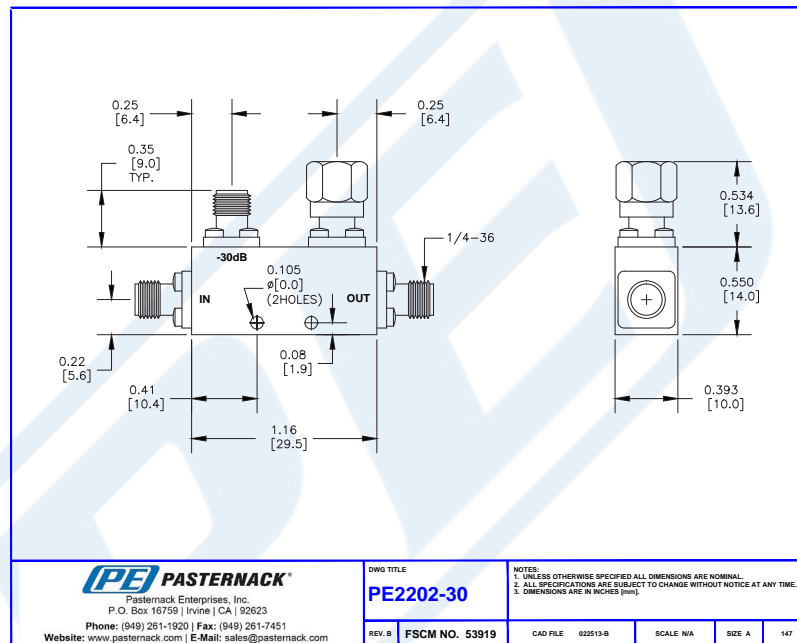
PE2202-30

#### Plotted and Other Data

Notes:

- Values at 25 °C, sea level

#### Outline Drawing



Directional 30 dB SMA Coupler From 2 GHz to 4 GHz Rated To 50 Watts from Pasternack Enterprises has same day shipment for domestic and International orders. Our RF, microwave and millimeter wave products maintain a 99% availability and are part of the broadest selection in the industry.

Click the following link (or enter part number in "SEARCH" on website) to obtain additional part information including price, inventory and certifications: [Directional 30 dB SMA Coupler From 2 GHz to 4 GHz Rated To 50 Watts PE2202-30](http://www.pasternack.com/directional-30-db-sma-coupler-2-4-ghz-50-watts-pe2202-30-p.aspx)

URL: <http://www.pasternack.com/directional-30-db-sma-coupler-2-4-ghz-50-watts-pe2202-30-p.aspx>

The information contained in this document is accurate to the best of our knowledge and representative of the part described herein. It may be necessary to make modifications to the part and/or the documentation of the part, in order to implement improvements. Pasternack reserves the right to make such changes as required. Unless otherwise stated, all specifications are nominal. Pasternack does not make any representation or warranty regarding the suitability of the part described herein for any particular purpose, and Pasternack does not assume any liability arising out of the use of any part or documentation.