

AMH16-16R-02/082

COBHAM

Directional Antenna

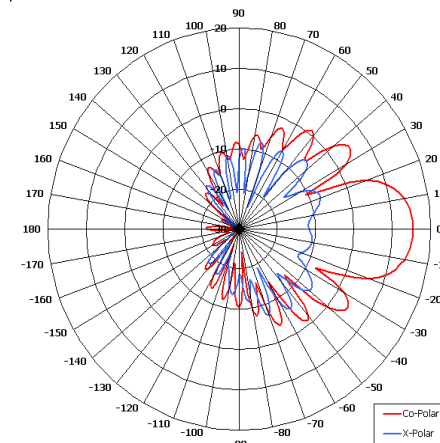
The most important thing we build is trust

Designed for Satellite Applications

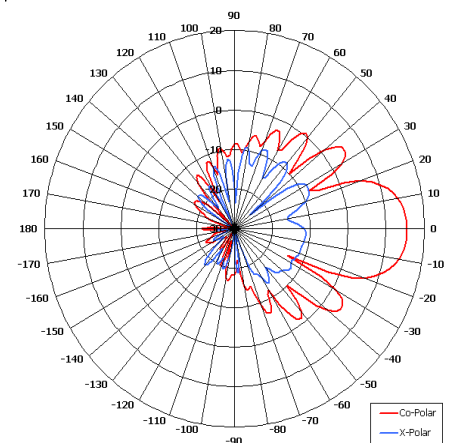
High Gain

High Power

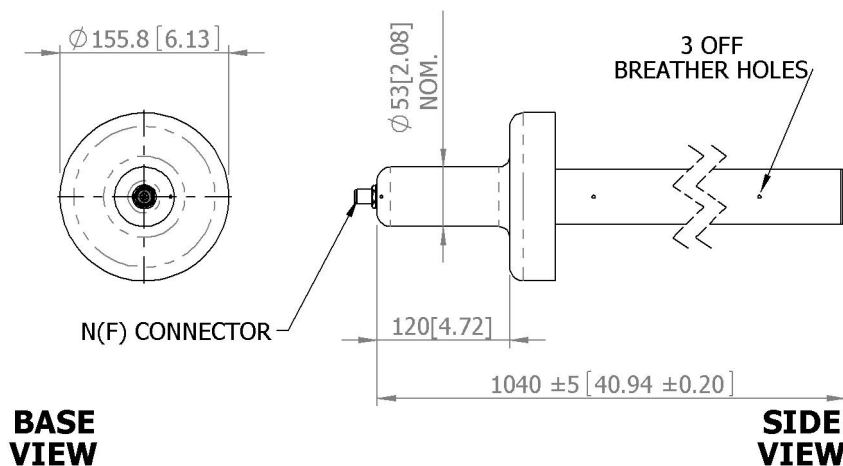
Right Hand Circular



Azimuth Pattern

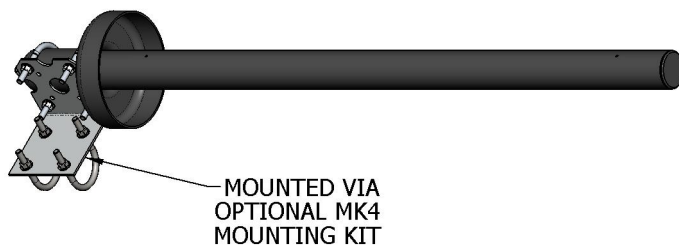


Elevation Pattern



BASE VIEW

SIDE VIEW



GA: 0082

ELECTRICAL

Frequency	1.52 - 1.66 GHz
Gain	16 dBiC Nom
Polarisation	Right Hand Circular
Beamwidth	30° (Az) x 30° (El) Approx
Axial Ratio	2.0 dB Typ
VSWR	1.5:1
Power Rating	60 W
Front to Back	N/A

MECHANICAL

Standard Finish	Matt Black
Mass	2.8 Kg (6.16 lbs)
Temperature	-20° to +50°C
Wind Loading	8.9 Kg (19.6 lbs) @ 100mph

MOUNTING OPTIONS

Kits Available	MK4
See separate data sheets	

ADDITIONAL NOTES

Issued 060111

European Antennas Limited trading as Cobham Antenna Systems, Microwave Antennas

European Antennas Limited has a policy of continuous development and stress that the information provided is a guide only and does not constitute an offer or contract or part thereof. Whilst every effort is made to ensure the accuracy of the information contained in this brochure, no responsibility can be accepted for any errors or omissions.

The copyright of antenna designs and images is copyright protected and owned by European Antennas Limited.
©European Antennas Limited

For further information please contact:

Cobham Antenna Systems, Microwave Antennas

Lambda House, Cheveley,
Newmarket, Suffolk CB8 9RG, UK.

Tel +44 (0)1638 732 177

Fax +44 (0) 1638 731999

Email newmarket.sales@cobham.com