



SP4T Electromechanical Relay Switch DC to 22 GHz, SMA,  
30 Watts, 28V Control with Normally Open, Indicators

TECHNICAL DATA SHEET

PE71S6129

The PE71S6129 is Single Pole Four Throw Switch that operates from DC to 22 GHz. The switch has a normally open actuator, Indicators and 1M life cycles. The switch has an operating voltage of 28 Volts.

**Features**

- SP4T Switch
- DC to 22 GHz Operating Frequency Range
- 1 M Cycles min
- Normally Open Switch
- Indicators
- TTL Control
- Switching Sequence Break Before Make

**Applications**

- Test & Measurement
- Communications System
- Instrumentation

**Electrical Specifications**

Frequency Range	DC to 22 GHz
Impedance	50 Ohms
Actuator	Normally Open, Indicators
Actuating Current	135 mA
Control Voltage	28 Volts
RF Input Power (Max CW)	30 Watts

**RF Characteristic**

Description	Band 1	Band 2	Band 3	Band 4	Band 5	Units
Frequency Range	DC to 4	4 to 8	8 to 12	12 to 18	18 to 22	GHz
VSWR, Max	1.2:1	1.3:1	1.4:1	1.5:1	1.6:1	
Insertion Loss, Max	0.3	0.35	0.4	0.5	0.6	dB
Isolation, Min	75	70	65	60	60	dB

**Mechanical Specifications**

Connector Type	SMA Female
Operating Life	1,000,000
Terminals	Solder Pins
Switching Time (nominal voltage, 25°C)	<15 ms Typ

**Environmental Specifications**

<b>Temperature</b>	
Operating Range	-55 to +85 deg C
Environment	MIL-DTL-3928
Housing Material and Plating	Aluminum

Click the following link (or enter part number in "SEARCH" on website) to obtain additional part information including price, inventory and certifications: [SP4T Electromechanical Relay Switch DC to 22 GHz, SMA, 30 Watts, 28V Control with Normally Open, Indicators PE71S6129](#)



SP4T Electromechanical Relay Switch DC to 22 GHz, SMA,  
30 Watts, 28V Control with Normally Open, Indicators

TECHNICAL DATA SHEET

PE71S6129

**Compliance Certifications** (visit [www.Pasternack.com](http://www.Pasternack.com) for current document)  
RoHS Compliant

**Plotted and Other Data**

Notes:

- Values at +25 °C, sea level
- ESD Sensitive Material, Transport material in Approved ESD bags. Handle only in approved ESD Workstation



SP4T Electromechanical Relay Switch DC to 22 GHz, SMA, 30 Watts, 28V Control with Normally Open, Indicators from Pasternack Enterprises has same day shipment for domestic and International orders. Our RF, microwave and millimeter wave products maintain a 99% availability and are part of the broadest selection in the industry.

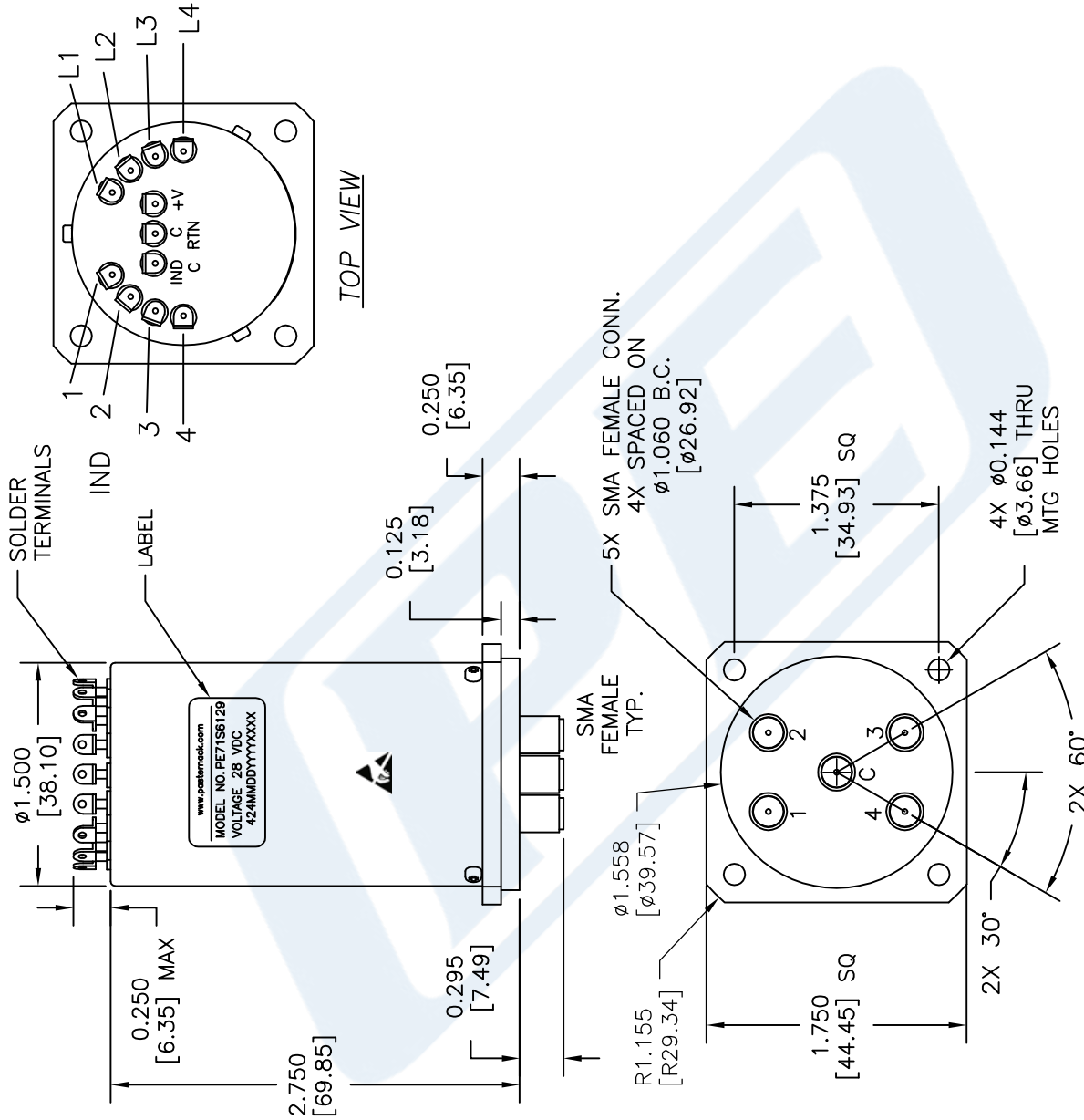
Click the following link (or enter part number in "SEARCH" on website) to obtain additional part information including price, inventory and certifications: [SP4T Electromechanical Relay Switch DC to 22 GHz, SMA, 30 Watts, 28V Control with Normally Open, Indicators PE71S6129](http://www.pasternack.com/sma-sp4t-electromechanical-relay-switch-22-ghz-normally-open-indicators-pe71s6129-p.aspx)

URL: <http://www.pasternack.com/sma-sp4t-electromechanical-relay-switch-22-ghz-normally-open-indicators-pe71s6129-p.aspx>

The information contained in this document is accurate to the best of our knowledge and representative of the part described herein. It may be necessary to make modifications to the part and/or the documentation of the part, in order to implement improvements. Pasternack reserves the right to make such changes as required. Unless otherwise stated, all specifications are nominal. Pasternack does not make any representation or warranty regarding the suitability of the part described herein for any particular purpose, and Pasternack does not assume any liability arising out of the use of any part or documentation.

# PE71S6129 CAD Drawing

SP4T Electromechanical Relay Switch DC to 22 GHz, SMA,  
30 Watts, 28V Control with Normally Open, Indicators



UNLESS OTHERWISE SPECIFIED  
DIMENSIONS ARE IN INCHES.  
TOLERANCES ARE:  
DECIMALS ANGLES FRACTIONS  
.XX ±.01 ± 1/2° ± 1/16  
.XXX ±.005

HOLE DIAMETER	TOLERANCE
.0135 TO .125	+.004/- .001
.126 TO .250	+.005/- .001
.251 TO .500	+.006/- .001
.501 TO .750	+.008/- .001
.751 TO 1.000	+.010/- .001
1.001 TO 2.000	+.012/- .001

\* THESE DIMENSIONS AND TOLERANCES  
SUPERSEDE NOTE #1 ON TITLE BLOCK.

**PE PASTERNAK**  
THE ENGINEER'S RF SOURCE

Pasternack Enterprises, Inc.  
P.O. Box 16759 | Irvine | CA | 92623  
Phone: (949) 261-1920 | Fax: (949) 261-7451  
Website: www.pasternack.com | E-Mail: sales@pasternack.com

DWG TITLE

**PE71S6129**

NOTES:  
1. UNLESS OTHERWISE SPECIFIED ALL DIMENSIONS ARE NOMINAL.  
2. ALL SPECIFICATIONS ARE SUBJECT TO CHANGE WITHOUT NOTICE AT ANY TIME.  
3. DIMENSIONS ARE IN INCHES [mm].

FSCM NO. 53919

CAD FILE 031115

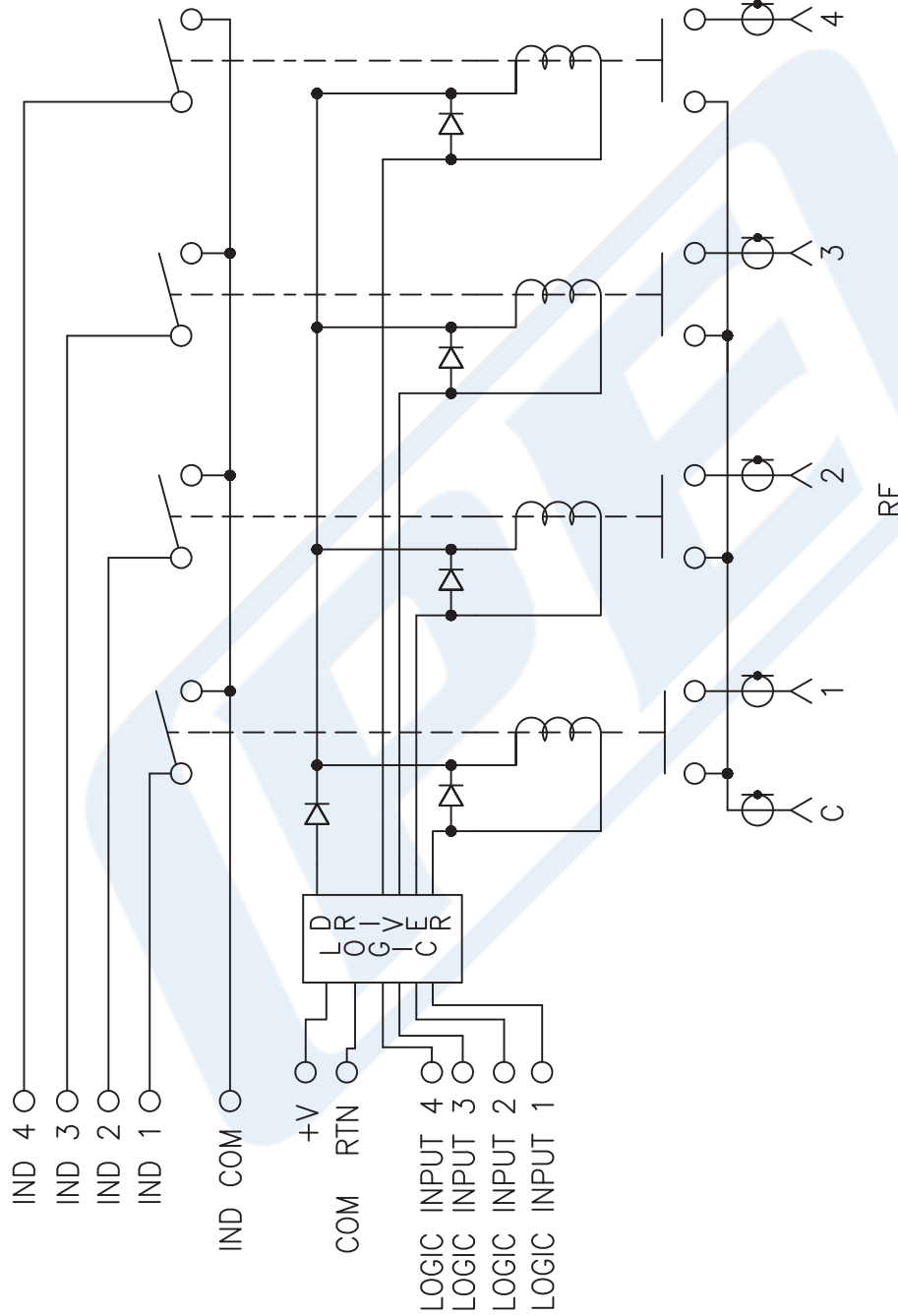
SCALE N/A

SIZE A

200

# PE71S6129 CAD Drawing

SP4T Electromechanical Relay Switch DC to 22 GHz, SMA,  
30 Watts, 28V Control with Normally Open, Indicators



SCHEMATIC NORMALLY OPEN SHOWN IN DE-ENERGIZED POSITION

DWG TITLE

**PE71S6129**

NOTES:  
1. UNLESS OTHERWISE SPECIFIED ALL DIMENSIONS ARE NOMINAL.  
2. ALL SPECIFICATIONS ARE SUBJECT TO CHANGE WITHOUT NOTICE AT ANY TIME.  
3. DIMENSIONS ARE IN INCHES [mm].

**Pasternack Enterprises, Inc.**  
P.O. Box 16759 | Irvine | CA | 92623  
Phone: (949) 261-1920 | Fax: (949) 261-7451  
Website: [www.pasternack.com](http://www.pasternack.com) | E-Mail: [sales@pasternack.com](mailto:sales@pasternack.com)

FSCM NO. 53919

CAD FILE 030615

SCALE N/A

SIZE A

200