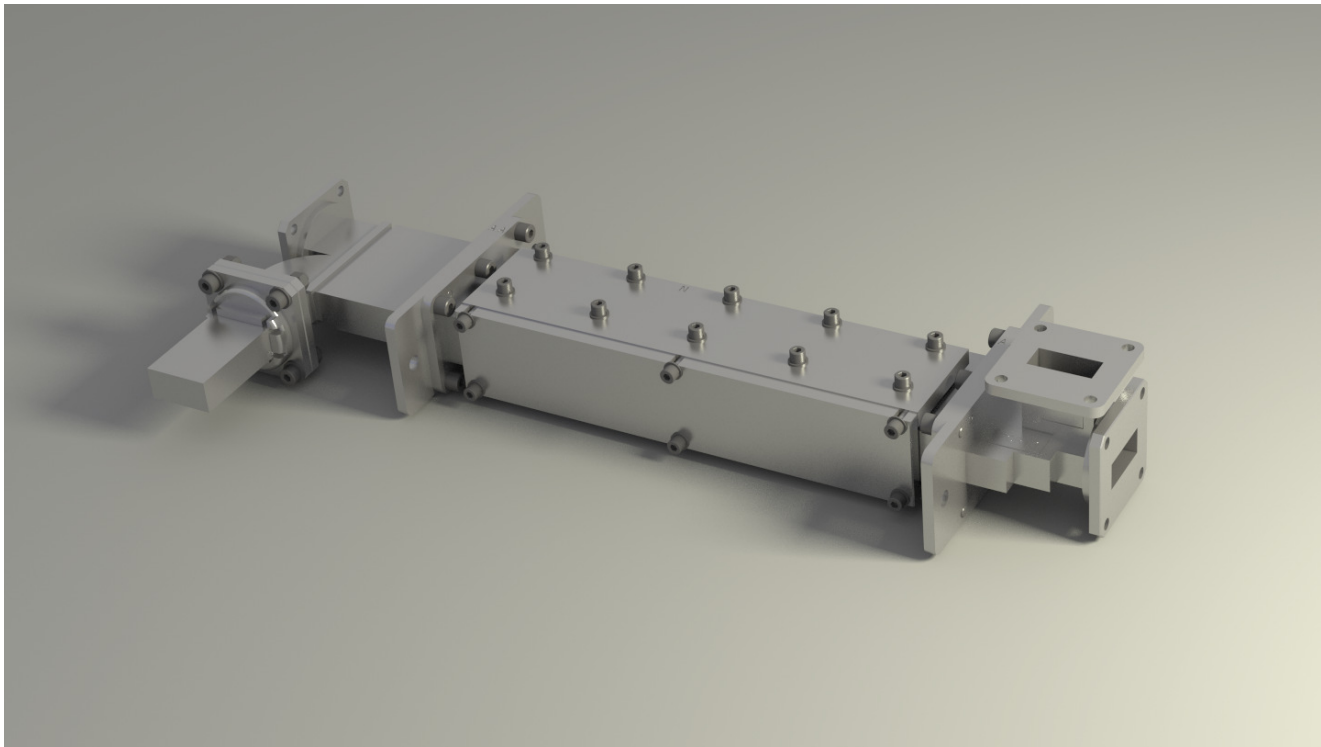


X-Band Differential Phase-shift Circulator (Space Application)



- Custom-designed Hybrid Tee and Coupler to improve bandwidth and multipaction performance
- Low Insertion Loss
- Circulator or Isolator versions available

Specification	
Operating Frequency	X-Band
Bandwidth	20%
Average Power	1.5kW max
Peak Power	15kW max
Return Loss	18dB min
Insertion Loss	0.3dB max
Isolation	20dB min
Waveguide Size	WR90
Operating Temp	-10 to +60C
Storage Temperature	-55 to +125C