



SMP Male Smooth Bore Hermetically Sealed  
Connector Solder Attachment Solder Mount Pin  
Terminal .050 inch Pin Length Full Radius

# TECHNICAL DATA SHEET

PE44928

## Configuration

Connector	SMP Male, Smooth Bore
Connector Specification	DESC 94007
Connector Interface Type	Pin
Attachment Method (Shield/Contact)	Solder
Body Style	Straight
Mount Method	Solder
Isolated Ground / Hermetic	Hermetically Sealed

## Electrical Specifications

Impedance 50 Ohms

## Mechanical Specifications

## Size

Length	0.19 in [4.83 mm]
Width/Dia.	0.145 in [3.68 mm]
Weight	0.082 lbs [37.19 g]

## Connector

Type	SMP Male
Contact Material and Plating	Kovar, Gold
Contact Plating Specification	MIL-G-45204
Body Material and Plating	Kovar, Gold
Body Plating Specification	MIL-G-45204

**Compliance Certifications** (visit [www.Pasternack.com](http://www.Pasternack.com) for current document)

RoHS Compliant

Click the following link (or enter part number in "SEARCH" on website) to obtain additional part information including price, inventory and certifications: [SMP Male Smooth Bore Hermetically Sealed Connector Solder Attachment Solder Mount Pin Terminal .050 inch Pin Length Full Radius PE44928](#)

# TECHNICAL DATA SHEET

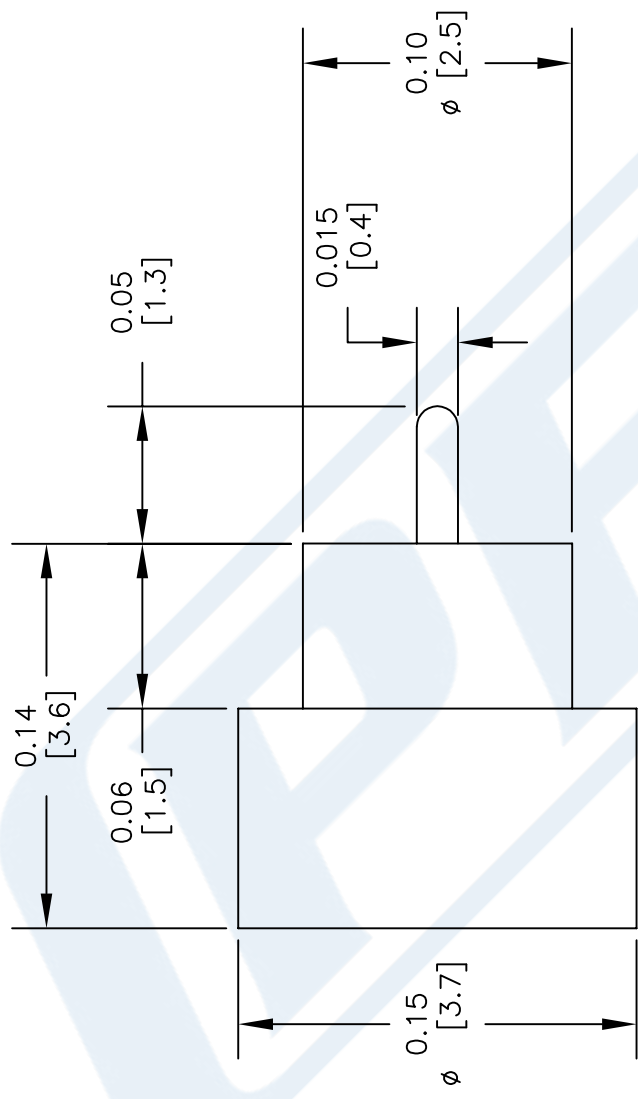
PE44928

Notes:

- The information contained in this document is accurate to the best of our knowledge and representative of the part described herein. It may be necessary to make modifications to the part and/or the documentation of the part, in order to implement improvements. Pasternack reserves the right to make such changes as required. Unless otherwise stated, all specifications are nominal. Pasternack does not make any representation or warranty regarding the suitability of the part described herein for any particular purpose, and Pasternack does not assume any liability arising out of the use of any part or documentation.

PE44928 CAD Drawing

SMP Male Smooth Bore Hermetically Sealed Connector Solder Attachment  
Solder Mount Pin Terminal .050 inch Pin Length Full Radius



DWG TITLE

PE44928

NOTES:  
1. UNLESS OTHERWISE SPECIFIED ALL DIMENSIONS ARE NOMINAL.  
2. ALL SPECIFICATIONS ARE SUBJECT TO CHANGE WITHOUT NOTICE AT ANY TIME.  
3. DIMENSIONS ARE IN INCHES [mm].

FSCM NO. 53919

SCALE N/A

SIZE A

CAD FILE 032514

150



Pasternack Enterprises, Inc.  
P.O. Box 16759 | Irvine | CA | 92623  
Phone: (949) 261-1920 | Fax: (949) 261-7451  
Website: [www.pasternack.com](http://www.pasternack.com) | E-Mail: [sales@pasternack.com](mailto:sales@pasternack.com)