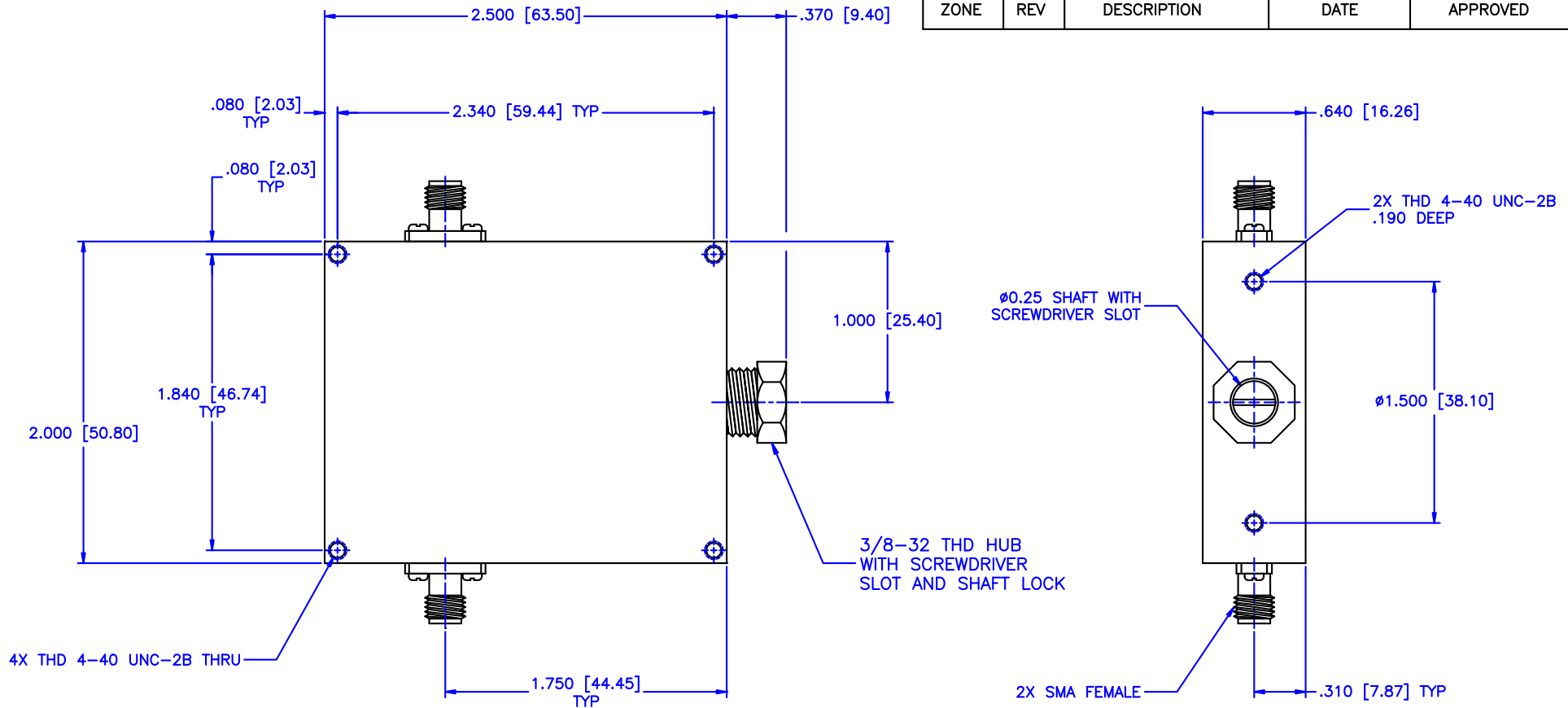


REVISIONS				
ZONE	REV	DESCRIPTION	DATE	APPROVED



Specifications:

Frequency Range: 8-12.4 GHz
 Attenuation: 40dB
 Insertion Loss: 0.5 Max.
 VSWR: 1.50:1
 RF Power: 7W Average, 3kW Peak

Environmental:

Temperature range: -55°C to +110°C
 Shock: 15 G's, 11mS, 1/2 sine
 Vibration: 3 G's overall
 Altitude: 40,000 ft. Survival 25,000ft Operating

MATERIAL:		MCLI MICROWAVE COMMUNICATIONS LABORATORIES INC. 7255 30TH AVE. N. SAINT PETERSBURG, FL 33710 TEL: (727) 344-6254 FAX: (727) 381-6116 http://WWW.MCLI.COM	SCALE:	
			N/A	
UNLESS OTHERWISE SPECIFIED: TOLERANCES IN (INCHES) OR [mm] (MILLIMETERS) FRACTIONS: $\pm 1/64$ DECIMALS: ± 0.01 ± 0.005 ANGLE: $\pm 1/2^\circ$		DRAWING TITLE:		
		CONTINUOUSLY VARIABLE ATTENUATOR		
DRAWN: Paiboon Luekhamhan DATE: 02-08-2011 APPROVED: T. Nguyen DATE: 02-08-2011		PART NO.		
		CVA10-40		
CAGE CODE: 0D2L5 SIZE: A REV: N/A DWG NO. 85373		PROPRIETARY NOTICE: THE INFORMATION IN THIS DRAWING IS PROPRIETARY AND SHALL NOT BE USED OR DISCLOSED WITHOUT WRITTEN PERMISSION FROM MICROWAVE COMMUNICATIONS LABORATORIES INC. (MCLI)		
		THIRD ANGLE PROJECTION 		