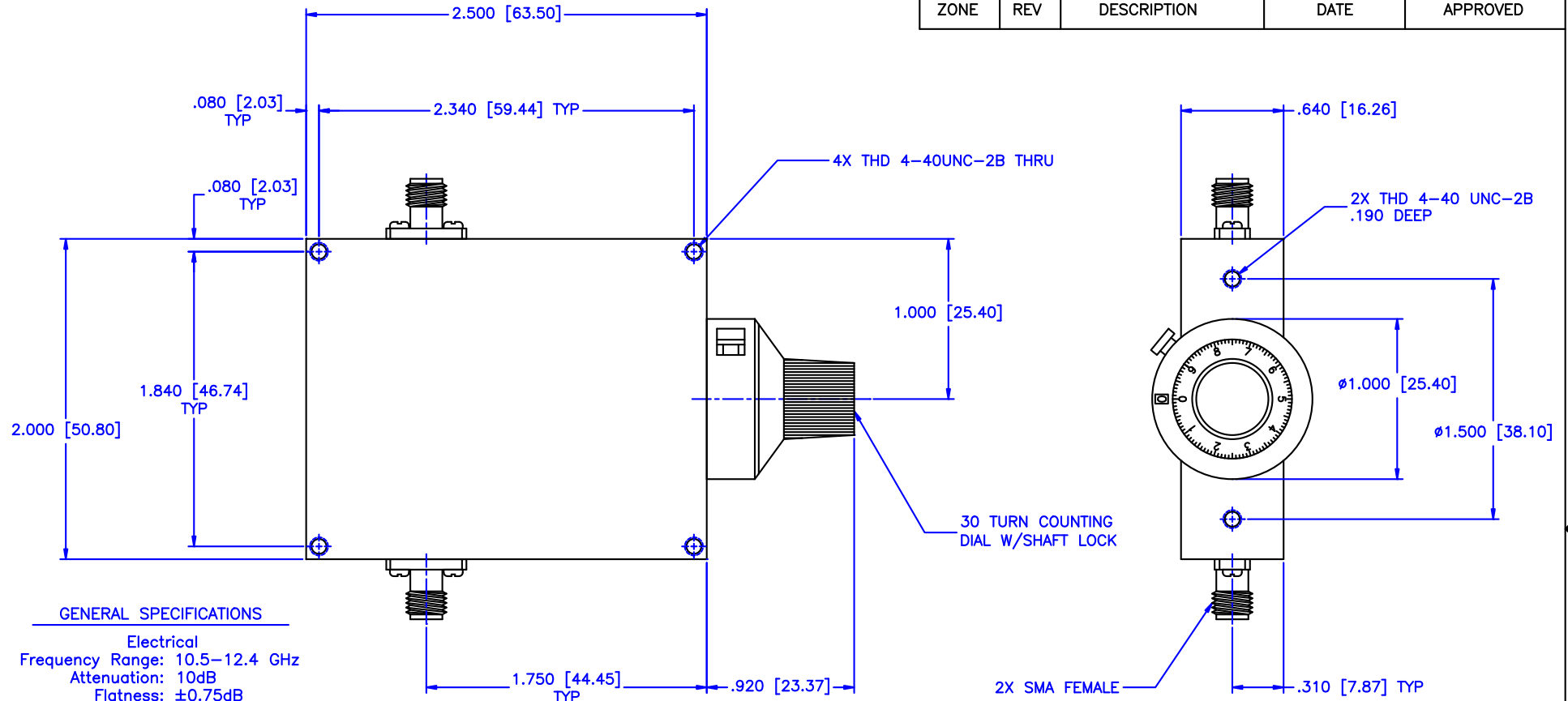


| REVISIONS |     |             |      |          |
|-----------|-----|-------------|------|----------|
| ZONE      | REV | DESCRIPTION | DATE | APPROVED |



#### GENERAL SPECIFICATIONS

**Electrical**  
Frequency Range: 10.5–12.4 GHz  
Attenuation: 10dB  
Flatness:  $\pm 0.75$ dB  
VSWR: 1.50:1 Max.  
Insertion Loss per Frequency Band  
to 18 GHz: 0.5dB max.  
to 26 GHz: 0.75dB max.  
to 40 GHz: 1.50dB max.  
RF Power: 7W average, 3kW peak

**Mechanical**  
Body: Aluminum  
Connectors: Stainless Steel  
Finish: Unique corrosion resistant 316 stainless steel epoxy coating IAW MIL-F-14072  
Weight: 5.2oz / 150gm

**Environmental**  
Operating Temperature:  $-55^{\circ}\text{C}$  to  $+110^{\circ}\text{C}$   
Shock: 15 G's, 11ms, 1/2 sine  
Vibration: 3 G's overall  
Altitude: 40,000ft. Survival 25,000ft Operating

|   |  |  |  |                       |     |
|---|--|--|--|-----------------------|-----|
| <b>MATERIAL:</b><br>                          |  | <b>MCLI</b> MICROWAVE COMMUNICATIONS LABORATORIES INC.<br>7255 30TH AVE. N. SAINT PETERSBURG, FL 33710<br>TEL: (727) 344-6254 FAX: (727) 381-6116<br>http://WWW.MCLI.COM |  | SCALE:                | N/A |
|   |  | UNLESS OTHERWISE SPECIFIED:<br>TOLERANCES<br>IN (INCHES) OR [mm] (MILLIMETERS)<br>FRACTIONS: $\pm 1/64$<br>DECIMALS: $\pm 0.01 \pm 0.005$<br>ANGLE: $\pm 1/2^{\circ}$    |  | SHEET:                | N/A |
| DRAWN: Paiboon Luekhamhan<br>DATE: 02-09-2011 |  | DRAWING TITLE:<br>CONTINUOUSLY VARIABLE ATTENUATOR WITH DIAL   |  | PART NO.<br>CA13-10/D |     |
| APPROVED: T. Nguyen<br>DATE: 02-09-2011       |  | CAGE CODE: OD2L5<br>SIZE: A<br>REV: N/A<br>DO NOT SCALE THE DRAWING  |  | DWG NO.<br>85454      |     |