

4

3

2

1

MECHANICAL
CONTACT: BREAK BEFORE MAKE
ACTUATOR: LATCHING
SWITCHING SPEED: 20 mSEC MAX

ELECTRICAL
ACTUATOR VOLTAGE: 28.0 Vdc (22.0–32.0 Vdc)
ACTUATOR CURRENT: 0.300 A MAX @ 28.0 Vdc
POWER HANDLING: 200 WCW @ 1.0 GHz
IMPEDANCE: 50 OHMS

ENVIRONMENTAL
OPERATING TEMP: –54°C to +90°C
SINE VIBRATION: 30 G'S rms
LIFE : 1,000,000 CYCLES
RANDOM VIBRATION: 20 G'S rms

SPECIFICATION:

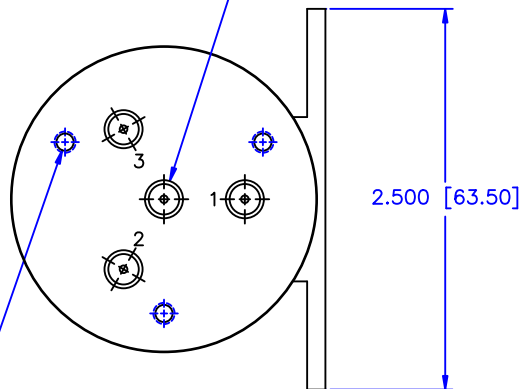
FREQUENCY RANGE (GHz): DC–2.0 2.0–4.0 4.0–8.0 8.0–12.4 12.4–18.0

VSWR (Max.): 1.20:1 1.25:1 1.30:1 1.40:1 1.50:1

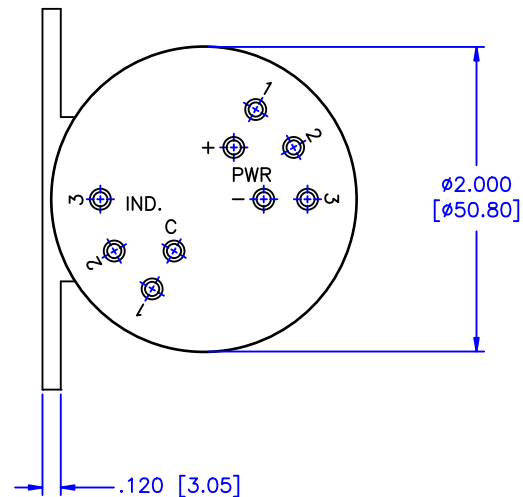
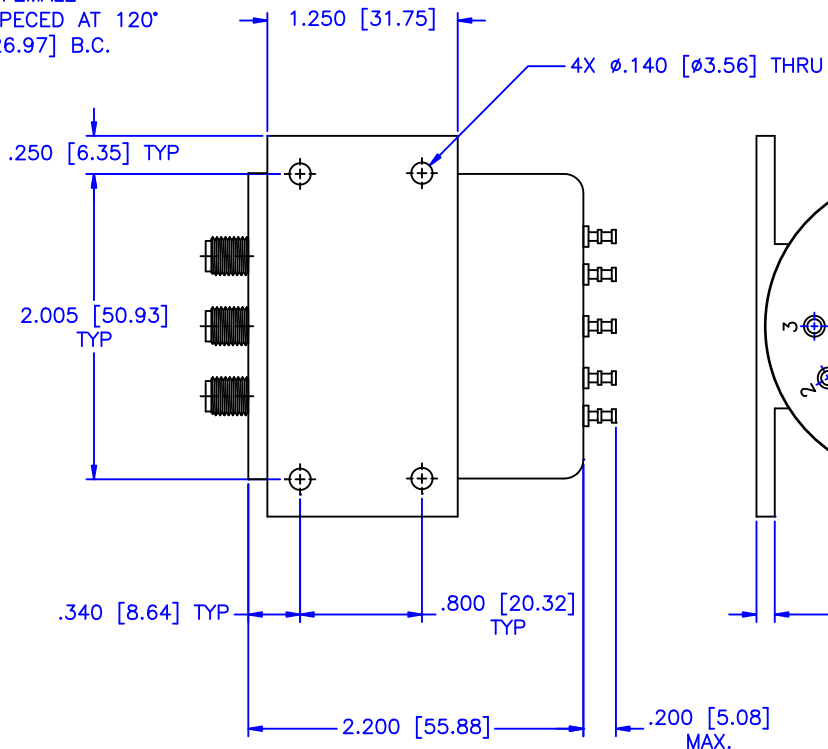
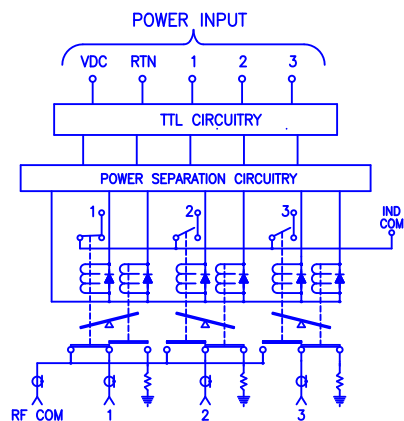
INSERTION LOSS (dB): 0.20 0.25 0.30 0.40 0.50

ISOLATION (dB): 90 80 80 70 60

(4) TYPE SMA FEMALE
(3) EQUALLY SPECED AT 120°
ON Ø1.062 [Ø26.97] B.C.



(3) 8–32UNC–2B THD X .220 DEEP
EQUALLY SPACED ON Ø1.500 B.C.



MATERIAL:

MCLI

MICROWAVE COMMUNICATIONS LABORATORIES INC.
7255 30TH AVE. N. SAINT PETERSBURG, FL 33710
TEL: (727) 344–6254 FAX: (727) 381–6116
http://WWW.MCLI.COM

SCALE: N/A
SHEET: N/A

UNLESS OTHERWISE SPECIFIED:
TOLERANCES
IN (INCHES) OR (mm) (MILLIMETERS)
FRACTIONS: $\pm 1/64$
DECIMALS: $\pm .01 \pm .005$
ANGLE: $\pm 1/2^\circ$

DRAWING TITLE:

ELECTROMECHANICAL SWITCHES

PART NO.

W3–7–LISL

DRAWN: Paiboon Luekhamhan

DATE: 06–26–2007

APPROVED: T. Nguyen

DATE: 06–26–2007

PROPRIETARY NOTICE:
THE INFORMATION IN THIS DRAWING IS PROPRIETARY
AND SHALL NOT BE USED OR DISCLOSED WITHOUT WRITTEN
PERMISSION FROM MICROWAVE COMMUNICATIONS
LABORATORIES INC. (MCLI)



CAGE CODE:

OD2L5

SIZE:

N/A

REV:

N/A

DWG NO.

83938

DO NOT SCALE THE DRAWING