

THE
PERFORMANCE LEADER
IN MICROWAVE CONNECTORS



Precision Adapters: DC to 110 GHz



Low VSWR
Low Insertion Loss
Low RF Leakage
High Temperature
Rugged & Durable
Excellent Repeatability

Southwest Microwave, Inc.

+1 (480) 783-0201 | www.southwestmicrowave.com

PRECISION ADAPTERS

DC to 110 GHz

Southwest Microwave offers a full range of commercially-priced within-series and between-series precision adapters with near-metrology grade performance. These adapters are produced and tested to the same criteria as adapters for Calibration Kits and provide a cost-effective solution for applications that do not call for phase matching, where previously only expensive metrology-grade adapters were used.

These adapters provide an economical solution for critical production and test requirements, where they are ideal for use as connector savers without compromising measurement accuracy. Southwest Microwave adapters are also approved for demanding environments such as Space or other Hi-rel applications.

SPECIFICATIONS

ELECTRICAL

Low VSWR:

DC to 18.0 GHz	1.10:1 Max
18.0 to 27.0 GHz	1.15:1 Max
27 to 40 GHz	1.15:1 Max
40 to 50 GHz	1.18:1 Max
50 to 67 GHz	1.25:1 Max
67 to 110 GHz	1.28:1 Max

Low RF Leakage: ≤ -100 dB

Low Insertion Loss

TEMPERATURE

-55°C to +165°C: N-to-SMA, SMA-to-SMA, 2.92 mm-to-1.85 mm, 1.85 mm-to-1.85 mm, 1.85 mm-to-0.9 mm, 0.9 mm-to-0.9 mm, 0.9 mm-to-1.0 mm and 1.0 mm-to-1.0 mm

-55°C to +135°C: All other adapters

TEST DATA

Test data is available at www.southwestmicrowave.com.

N to SMA (18 GHz)



2310SF
F to F



2320SF
M to F



2330SF
F to M



2340SF
M to M



2311SF
F to M



2312SF
F to F

SMA (27 GHz)



230-506SF
M to F



231-502SF
M to M



232-502SF
F to F



232-510SF
F to F
(Bulkhead)



232-512SF
F to F
(Threaded Mounting)



232-514SF
F to F
(Un-Threaded Mounting)

3.5 mm to 2.40 mm (33 GHz)



61410-00SF
F to F



61420-00SF
F to M



61430-00SF
M to F



61440-00SF
M to M

2.92 mm (K) (40 GHz)

O-Ring not included.



1030-00SF
F to M



1031-00SF
M to M



1032-00SF
F to F



1030-10SF
F to M
(Bulkhead)



1032-10SF
F to F
(Bulkhead)



1032-13SF
F to F
(Flange Mount)

2.92 mm (K) to 2.40 mm (40 GHz)



101410-00SF
F to F



101420-00SF
F to M

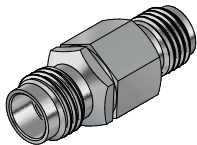


101430-00SF
M to F

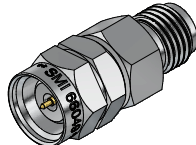


101440-00SF
M to M

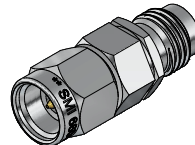
NEW 2.92 mm (K) to 1.85 mm (V) (40 GHz)



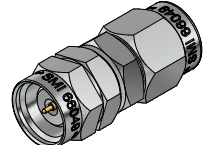
101810-00SF
F to F



101820-00SF
F to M



101830-00SF
M to F



101840-00SF
M to M

SSMA (Airline) to 2.40 mm (40 GHz)



11410-00SF
F to F



11420-00SF
F to M



11430-00SF
M to F



11440-00SF
M to M

2.40 mm (50 GHz)



1430-00SF
F to M



1431-00SF
M to M



1432-00SF
F to F

1.85 mm (V) (67 GHz)



1830-00SF
F to M



1831-00SF
M to M



1832-00SF
F to F

1.85 mm (V) to 0.9 mm SuperMini (67 GHz)



185240-00G
M to M



185330-00G
M to F



185220-00G
F to M



185310-00G
F to F

NEW 0.9 mm SuperMini (67 GHz)



535310-00G
F to F

NEW 0.9 mm SuperMini to 1.0 mm (W) (67 GHz)

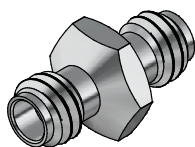


245220-00SF
M to F

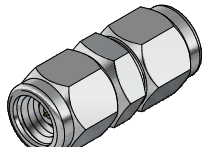


245310-00SF
F to F

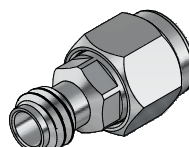
NEW 1.0 mm (W) (110 GHz)



2432-00SF
F to F



2431-00SF
M to M



2430-00SF
F to M