

Surface Mount RF Transformer

50Ω 0.25 to 400 MHz

Maximum Ratings

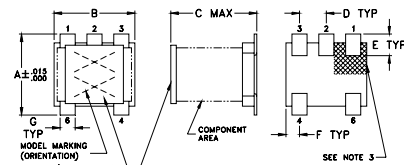
Operating Temperature	-40°C to 85°C
Storage Temperature	-55°C to 100°C
RF Power	0.25 W
DC current	30mA

Permanent damage may occur if any of these limits are exceeded.

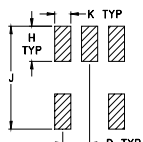
Pin Connections

PRIMARY DOT	6
PRIMARY	4
SECONDARY DOT	1
SECONDARY	3
SECONDARY CT	
NOT USED	2,5

Outline Drawing AT1521



PCB Land Pattern



Suggested Layout,
Tolerance to be within ±.002

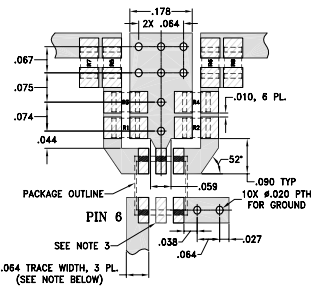
- Notes:
1. Case Material: Plastic
 2. Termination Finish: Tin plate over Nickel plate.
 3. Lead#1 identifier shall be located in the cross-hatched area shown, on bottom view. Identifier may be either a molded or marked feature.
 4. Top-Hat total thickness: .013 inches max.

Outline Dimensions (inch)

A	B	C	D	E	F
.150	.150	.160	.050	.040	.025
3.81	3.81	4.06	1.27	1.02	0.64

G	H	J	K	wt
.028	.065	.190	.030	grams
0.71	1.65	4.83	0.76	0.15

Demo Board MCL P/N: TB-77 Suggested PCB Layout (PL-243)



Res. No	Ohms Ω
R1	68.1
R2	68.1
R3	68.1
R4	68.1
R5	82.5
R6	82.5
R7	90.9
R8	90.9

- Notes:
1. TRACE WIDTH IS SHOWN FOR ROGERS RO4350B WITH DIELECTRIC THICKNESS .030" ± .002". COPPER: 1/2 OZ. EACH SIDE. FOR OTHER MATERIALS TRACE WIDTH MAY NEED TO BE MODIFIED.
 2. BOTTOM SIDE OF THE PCB IS CONTINUOUS GROUND PLANE.
 3. THIS PAD IS NOT REQUIRED FOR AT224 CASE STYLES.
- DENOTES PCB COPPER LAYOUT WITH SMOBC (SOLDER MASK OVER BARE COPPER)
 DENOTES COPPER LAND PATTERN FREE OF SOLDER MASK

Features

- plastic base with solder plated leads
- excellent amplitude unbalance, 0.2 dB typ. and phase unbalance, 3 deg. typ. in 1dB bandwidth
- aqueous washable

Applications

- balanced to unbalanced
- push-pull amplifier

TC1-42X+



CASE STYLE: AT1521
PRICE: \$2.29 ea. QTY (20)
\$1.29 ea. QTY (100)

+RoHS Compliant

The +Suffix identifies RoHS Compliance. See our web site for RoHS Compliance methodologies and qualifications

Available Tape and Reel at no extra cost

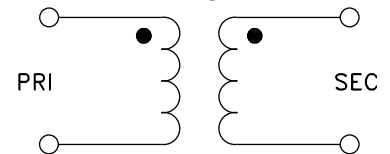
Reel Size	Devices/Reel
7"	20, 50, 100, 200, 500
13"	1000, 2000

Electrical Specifications

Ω RATIO	FREQUENCY (MHz)	INSERTION LOSS*		
		3 dB MHz	2 dB MHz	1 dB MHz
1	0.25-400	0.25-400	0.35-250	0.7-150

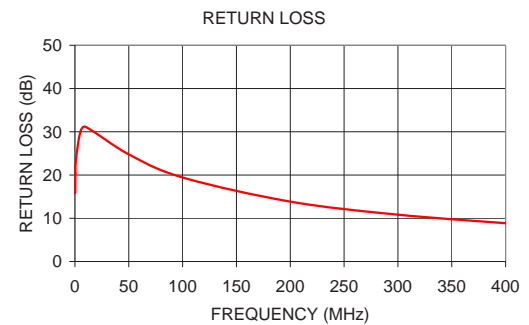
* Insertion Loss is referenced to mid-band loss, 0.3 dB typ.

Config. C



Typical Performance Data

FREQUENCY (MHz)	INSERTION LOSS (dB)	INPUT R. LOSS (dB)
0.25	0.79	15.85
0.50	0.63	20.29
1.00	0.52	23.72
5.00	0.34	29.93
10.00	0.30	31.13
50.00	0.37	24.78
100.00	0.48	19.43
200.00	0.69	13.85
300.00	0.95	10.83
400.00	1.44	8.85



Notes

- Performance and quality attributes and conditions not expressly stated in this specification document are intended to be excluded and do not form a part of this specification document.
- Electrical specifications and performance data contained in this specification document are based on Mini-Circuit's applicable established test performance criteria and measurement instructions.
- The parts covered by this specification document are subject to Mini-Circuits standard limited warranty and terms and conditions (collectively, "Standard Terms"); Purchasers of this part are entitled to the rights and benefits contained therein. For a full statement of the Standard Terms and the exclusive rights and remedies thereunder, please visit Mini-Circuits' website at www.minicircuits.com/MCLStore/terms.jsp



www.minicircuits.com P.O. Box 35166, Brooklyn, NY 11235-0003 (718) 934-4500 sales@minicircuits.com

REV. OR
M133779
ED-12659/1
TC1-42X+
IG/TD/CP/AM
131213
Page 1 of 1