

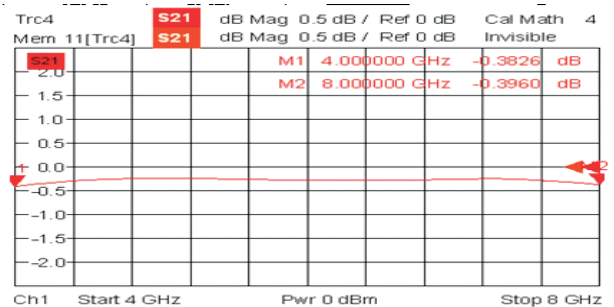
BROADBAND COAXIAL CIRCULATOR

P/N:TGH402-1L

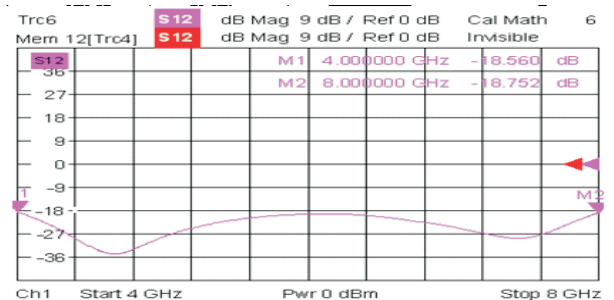


TYPICAL PLOT:

Insertion loss



Isolation



FEATURES AND APPLICATION:

- ♦ Octave or even wider Bandwidth with coaxial connectors at Input and Output Port
- ♦ Could be used in EW, Radar, Test systems and Wide Band Microwave Assemblys.

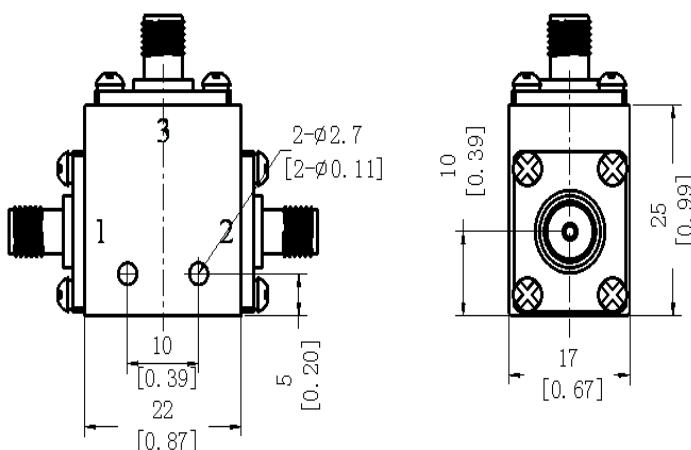
TECHNICAL SPECIFICATIONS:

Frequency Range	Insertion Loss	VSWR	Isolation	Average Power	Transmission Direction	Connector
4-8GHz	0.5dB	1.4	16dB	10W	Anticlockwise	SMA-F

ENVIRONMENTAL PARAMETERS:

WORKING TEMPERATURE: -20~+70℃

OUTLINE:



VSWR

