

BIAS MONITOR TEE

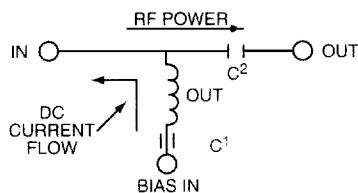
800–2000 MHz

FEATURES

- 7/16 Main Line Connectors
- Covers Cellular and PCS Frequency Range
- Capable of with standing simulated 4KV lightning
- Excellent Insertion Loss Characteristics
- High Power Rating of 80W Avg./Peak

DESCRIPTION

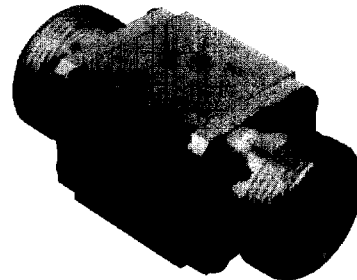
The EP-1075 is high performance Bias Tee that can be used to inject a DC bias current into an RF transmission line to bias an RF Amplifier (for example) without loading the RF transmission line. The device includes a DC Block in one direction. It is capable of withstanding a lightning strike on the output terminal without affecting the bias circuit. (Lightning simulation is 4KV spike; risetime 10µs and falltime 350 ms.)



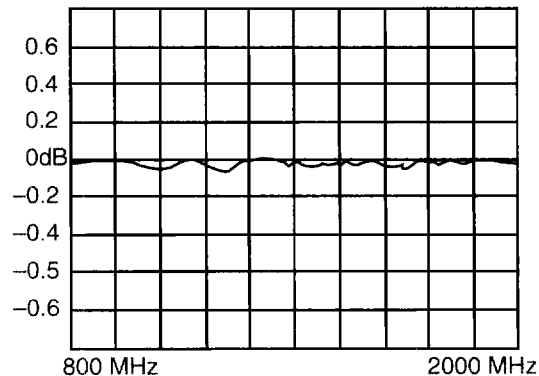
ELECTRICAL SPECIFICATIONS

Frequency Range:	800–2000 MHz
RF Impedance:	50 Ohms
RF Power:	80 Watts Avg. and Peak
Bias Input:	1.0 Amp maximum
VSWR:	1.2:1 maximum
Insertion Loss:	0.2 dB maximum
Voltage Breakdown:	300 Volts minimum
Mainline Capacitances:	15 pF
Bias Capacitance:	100 pF
Inductance:	60 nH
Connectors:	7/16 female; input/output* Solder Pins; bias/ground
Operating Temperature:	–55 to +85°C

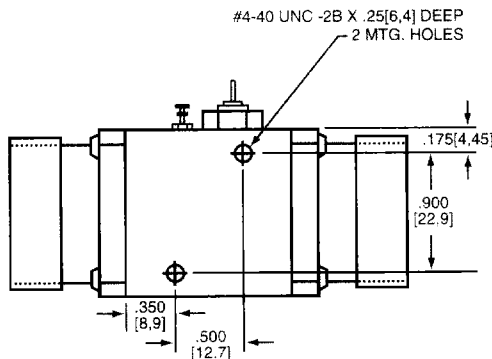
*Available in Type N, SMA, SMB



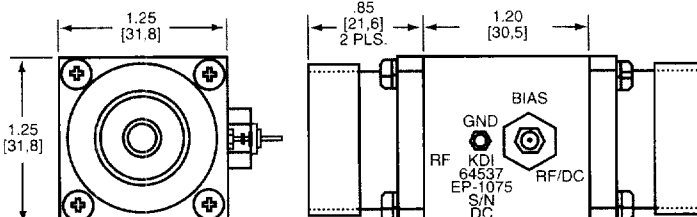
INSERTION LOSS



RETURN LOSS



MATES WITH 7/16 SERIES MALE CONN
INTERFACE DIMS PER IEC 169-4 STD
2 PLS



KDI/TRIANGLE
An MCE Company CORPORATION

60 South Jefferson Road, Whippany, NJ 07981
Tel: 973-887-8100 • Fax: 973-884-0445
E-Mail: kdisales@aol.com
See us on the web @ www.kditriangle.com