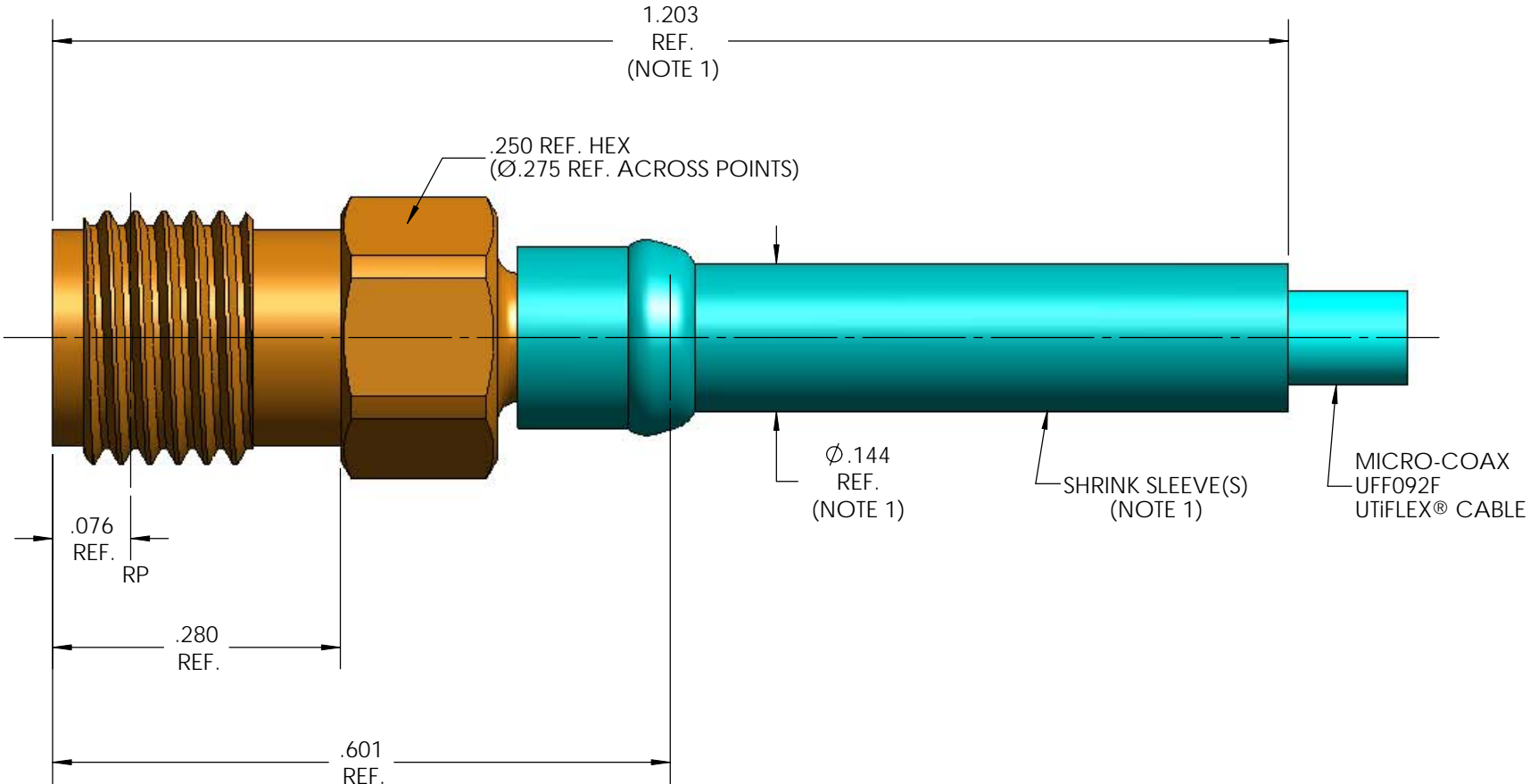
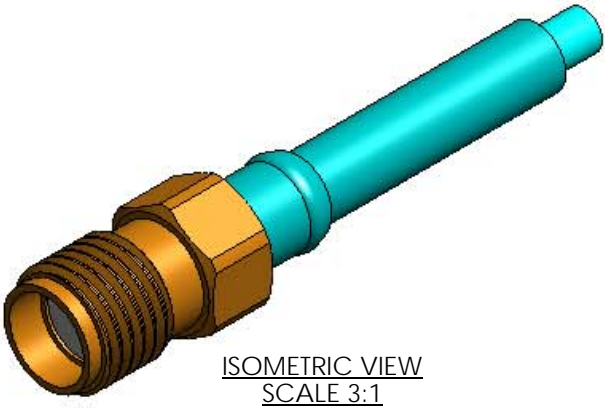


MECHANICAL CHARACTERISTICS	
INTERFACE	MIL-STD-348, FIGURE 310-2
IN ACCORDANCE WITH THE INTENT OF SLANT SHEET	MIL-PRF-39012/57 REF.
RECOMMENDED MATING TORQUE	9 IN-LBS. NOM.
FORCE TO ENGAGE	2 IN-LBS. MAX.
FORCE TO DISENGAGE	2 IN-LBS. MIN.
DURABILITY	500 CYCLES MIN.
AXIAL CONTACT RETENTION (FROM INTERFACE)	6 LBS. MIN.
AXIAL CONTACT RETENTION (FROM CABLE)	6 LBS. MIN.
CENTER CONTACT INSERTION (FROM CABLE)	2 LBS. MAX
CENTER CONTACT WITHDRAW (FROM CABLE)	1 Oz. MIN.
CABLE RETENTION	10 LBS. MIN.
MASS	1.73 GRAMS NOM
ELECTRICAL CHARACTERISTICS	
IMPEDANCE	50 Ohms NOM.
MAXIMUM FREQUENCY	18 GHz
VSWR DC - 18 GHz	1.16:1 MAX.
INSERTION LOSS	0.03 √F (GHz) dB MAX.
DIELECTRIC WITHSTANDING VOLTAGE	750 Vrms MIN.
INSULATION RESISTANCE	5000 MegaOhms MIN.
RF LEAKAGE DC - 18 GHz	-90 dB MIN.
CORONA	190 Vrms MIN. @ 70,000 FEET
RF HIGH POTENTIAL	500 Vrms MIN.
CONTACT RESISTANCE (INNER)	3.0 MilliOhms MAX.
CONTACT RESISTANCE (OUTER)	2.0 MilliOhms MAX.
ENVIRONMENTAL CHARACTERISTICS	
OPERATING TEMPERATURE	-65 °C TO 165 °C
VIBRATION	MIL-STD-202, METHOD 204, CONDITION D
MECHANICAL SHOCK	MIL-STD-202, METHOD 213, CONDITION I
THERMAL SHOCK	MIL-STD-202, METHOD 107, CONDITION (NO VIBRATION)
CORROSION	MIL-STD-202, METHOD 101, CONDITION B, 5%
MATERIALS AND FINISH	
CONTACT, BODY	BERYLLIUM COPPER, ASTM-B-196, GOLD PLATED PER MIL-DTL-45204, OVER NICKEL PLATE PER AMS-QQ-N-290
INSULATOR	TFE FLUOROCARBON PER ASTM-D-1710
APPLICATION	
CABLE(S)	UFF092F
INSTALLATION	PER CONFIGURATOR

THIS DRAWING IS PROPRIETARY AND CONFIDENTIAL.



NOTE:

1. MARKER LOCATION ON THIS DRAWING IS FOR REFERENCE ONLY AND IS SUBJECT TO CHANGE WITHOUT NOTICE.

THIS SPECIFICATION IS THE PROPERTY OF MICRO-COAX, INC. AND MAY NOT BE USED OR COPIED WITHOUT THE EXPRESS WRITTEN PERMISSION OF MICRO-COAX, INC.		INITIALS		DATE		<div>MICRO-COAX[®]</div> <div>Leading the way in transmission line solutions.</div> <div>Copyright Micro-Coax, Inc.</div>					
		DWN.	MJM	10/24/06							
		CHKD.	CCF	7/30/10							
		APPVD.									
TOLERANCES UNLESS OTHERWISE SPECIFIED		TITLE									
		SMA JACK. UFF092F CABLE									
.XX	± .02	ALL DIMENSIONS IN INCHES UNLESS OTHERWISE SPECIFIED. SCREW THDS. TO BE IN ACCORD WITH ANSI B1.1-1989.		FSCM NO.	SIZE	SCALE	SHEET NO.	DRAWING NO.		REV	
.XXX	± .005			64639	B	6:1	1 OF 1	SD904646	B		
.XXXX	± .0010										
ANGLES	± 2°										