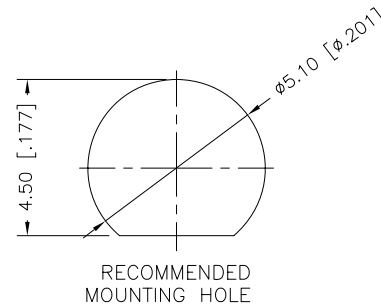
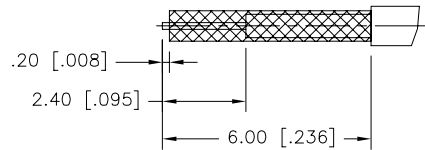
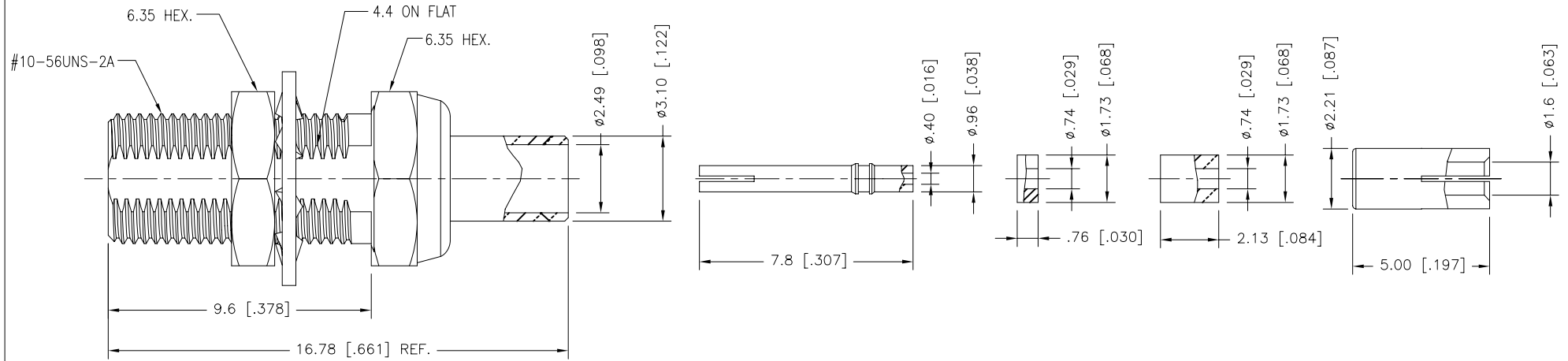


REV.	DATE	ECR NO.	DESCRIPTION
NC	06/01/09	XXXXXX	INITIAL RELEASE



- NOTES:
- CRIMPED FERRULE  
HEX CRIMP SIZE .105"  
CONTACT PIN TO SOLDER
  - MAX. PANEL THICKNESS=6.8mm

DESCRIPTION	MATERIAL	FINISH	QTY
10 NUT HEX	BRASS	GOLD	1
9 LOCK WASHER	BRASS	GOLD	1
8 INNER FERRULE	BRASS	GOLD	1
7 SLEEVE	BRASS	GOLD	1
6 INSULATOR	PTFE	NATURAL	1
5 CONTACT PIN	BERYLLIUM COPPER	GOLD	1
4 BARREL	BRASS	GOLD	1
3 INSULATOR	PTFE	NATURAL	1
2 INSULATOR	PTFE	NATURAL	1
1 BODY	BRASS	GOLD	1

UNLESS OTHERWISE SPECIFIED DIMENSIONS ARE IN MILLIMETERS. DIMENSIONS IN [ ] ARE IN INCHES AND FOR CUSTOMER REFERENCE ONLY.

UNLESS OTHERWISE SPECIFIED TOLERANCES FOR MILLIMETERS ARE:  
0.5 - 8mm  $\pm$  0.20mm  
8 - 30mm  $\pm$  0.40mm  
30 - 120mm  $\pm$  0.50mm

UNLESS OTHERWISE SPECIFIED TOLERANCES FOR INCHES ARE:  
.020 - .315 =  $\pm$  0.007"  
.315 - 1.180 =  $\pm$  0.015"  
1.180 - 4.724 =  $\pm$  0.020"

DO NOT SCALE DRAWING

APPROVALS	DATE
DRAWN J.CHENG	06/01/09
CHECKED	
ISSUED	
SHEET 1 OF 1	
CAD FILE C:/CONNEX/252203.DWG	

PART DESCRIPTION			
<b>Amphenol Connex</b>			
MCX BULKHEAD CRIMP JACK (FOR 1.37 MM CABLE)			
PART NO. 252203			
DWG. NO.	252203.DWG	REV. NC	SIZE A SCALE NA