

MECHANICAL CHARACTERISTICS

INTERFACE	MIL-STD-348, FIGURE 310-1
IN ACCORDANCE WITH THE INTENT OF SLANT SHEET	MIL-PRF-39012/55 REF.
RECOMMENDED MATING TORQUE	9 IN-LBS. NOM.
COUPLING PROOF TORQUE	15 IN-LBS. MIN.
COUPLING NUT RETENTION	60 LBS. MIN.
FORCE TO ENGAGE	2 IN-LBS. MAX.
FORCE TO DISENGAGE	2 IN-LBS. MIN.
DURABILITY	500 CYCLES MIN.
AXIAL CONTACT RETENTION (FROM INTERFACE)	6 LBS. MIN.
AXIAL CONTACT RETENTION (FROM CABLE)	6 LBS. MIN.
CABLE RETENTION	20 LBS.
MASS	7.75 GRAMS NOM.

ELECTRICAL CHARACTERISTICS

IMPEDANCE	50 Ohms NOM.
MAXIMUM FREQUENCY	18 GHz
VSWR DC - 12.4 GHz	1.12:1 MAX.
12.4 - 18 GHz	1.16:1 MAX.
INSERTION LOSS	0.04 \sqrt{f} (GHz) dB MAX.
DIELECTRIC WITHSTANDING VOLTAGE	750 Vrms MIN.
INSULATION RESISTANCE	5000 MegaOhms MIN.
RF LEAKAGE DC - 18 GHz	-90 dB MIN.
CORONA	200 Vrms MIN. @ 70,000 FEET
RF HIGH POTENTIAL	500 Vrms MIN.
CONTACT RESISTANCE (INNER)	4.0 MilliOhms MAX.
CONTACT RESISTANCE (OUTER)	2.0 MilliOhms MAX.

ENVIRONMENTAL CHARACTERISTICS

OPERATING TEMPERATURE	-100 °C TO 150 °C
VIBRATION	MIL-STD-202, METHOD 204, CONDITION D
MECHANICAL SHOCK	MIL-STD-202, METHOD 213, CONDITION I
THERMAL SHOCK	MIL-STD-202, METHOD 107, CONDITION B
CORROSION	MIL-STD-202, METHOD 101, CONDITION B, 5%

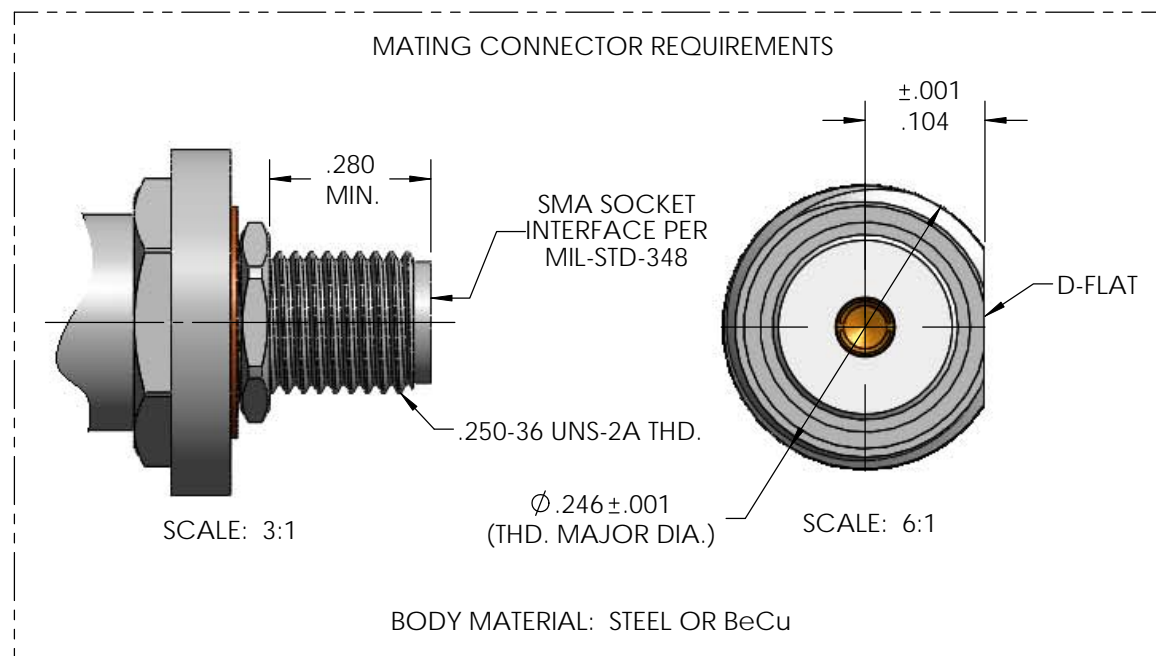
MATERIALS AND FINISH

MAIN BODY, COUPLING NUT, LOCKING SLEEVE	STEEL, CORROSION RESISTANT, ASTM-A-582, UNS NO. S30300, PASSIVATED PER ASTM-A-967
REAR BODY, CONTACT	BERYLLIUM COPPER, ASTM-B-196, GOLD PLATED PER MIL-DTL-45204, OVER NICKEL PLATE PER AMS-QQ-N-290
SNAP RING	BERYLLIUM COPPER, PER ASTM-B-197
INSULATOR	TFE FLUOROCARBON PER ASTM-D-1710
DIELECTRIC BEAD(S)	POLYETHERMIDE THERMOPLASTIC, PER ASTM-D-5205
SPRING	316BRT STAINLESS STEEL, PASSIVATED PER ASTM-B-967

APPLICATION

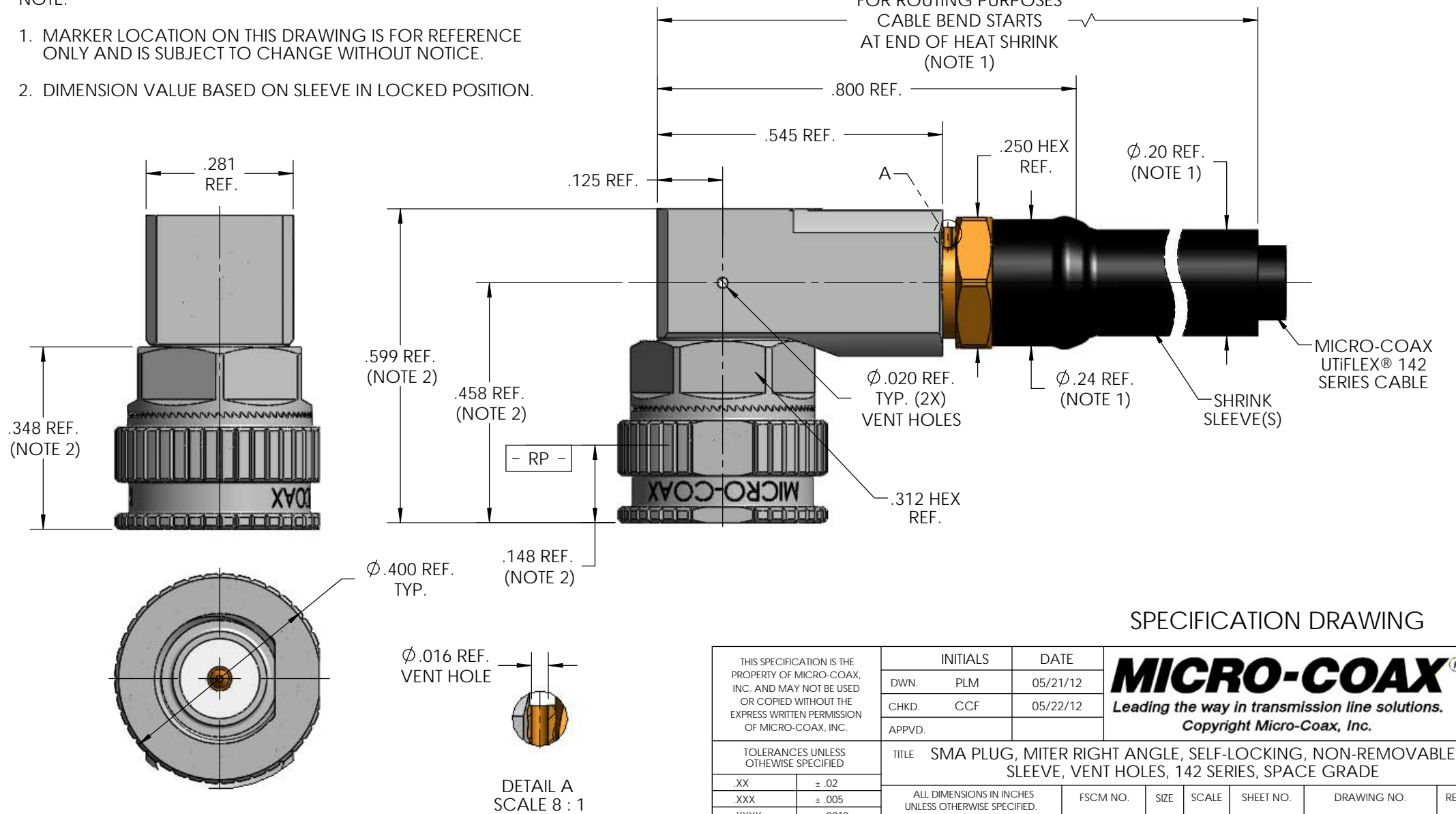
CABLE(S)	142 SERIES
INSTALLATION	PER CONFIGURATOR

THIS DRAWING IS PROPRIETARY AND CONFIDENTIAL.

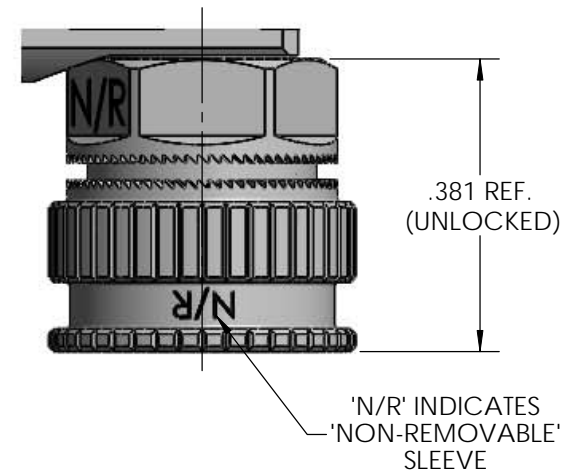


NOTE:

1. MARKER LOCATION ON THIS DRAWING IS FOR REFERENCE ONLY AND IS SUBJECT TO CHANGE WITHOUT NOTICE.
2. DIMENSION VALUE BASED ON SLEEVE IN LOCKED POSITION.



REV	DESCRIPTION	DATE	BY	APPVD	CHKD
1	PRELIMINARY RELEASE, ESR 1214145	5/29/2012	PLM	RS	CCF
2	ADDED RED STRIPE SPECIFICATION ON COUPLING NUT	9/4/2012	PLM	RS	RS
3	INCREASED LENGTH OF LOCKING SLEEVE BY .025; UPDATED MATING SMA BHJ BODY 'D' DIMENSIONAL REQUIREMENTS	3/12/2013	PLM	RS	RS
4	REMOVED RED STRIPE	6/4/2013	PLM	RS	RS



SPECIFICATION DRAWING

THIS SPECIFICATION IS THE PROPERTY OF MICRO-COAX, INC. AND MAY NOT BE USED OR COPIED WITHOUT THE EXPRESS WRITTEN PERMISSION OF MICRO-COAX, INC.		INITIALS		DATE		 Leading the way in transmission line solutions. <i>Copyright Micro-Coax, Inc.</i>			
		DWN.	PLM	05/21/12					
		CHKD.	CCF	05/22/12					
		APPVD.							
TOLERANCES UNLESS OTHERWISE SPECIFIED		TITLE SMA PLUG, MITER RIGHT ANGLE, SELF-LOCKING, NON-REMOVABLE SLEEVE, VENT HOLES, 142 SERIES, SPACE GRADE							
.XX	± .02	ALL DIMENSIONS IN INCHES UNLESS OTHERWISE SPECIFIED. SCREW THDS. TO BE IN ACCORD WITH ANSI B1.1-1989.		FSCM NO. 64639	SIZE B	SCALE 4:1	SHEET NO. 1 OF 1	DRAWING NO. SD905195	REV. 4
.XXX	± .005								
.XXXX	± .0010								
ANGLES	±2°								