



Waveguide Horn Antenna Operates From 50 GHz to 75 GHz With a Maximum 42 dBi Gain WR-15 Input

TECHNICAL DATA SHEET

PE9881-42

Configuration

Design	Waveguide Horn
Frequency Range, GHz	50 to 75
Interface 1	WR-15
Interface 1 Specification	UG-385/U

Electrical Specifications

Nominal Gain, dBi	42
-------------------	----

Mechanical Specifications

Size

Length, in [mm]	13.17 [334.52]
Width, in [mm]	10.79 [274.07]
Height, in [mm]	10.79 [274.07]
Weight, lbs [Kg]	5 [2.27]

Compliance Certifications (visit www.Pasternack.com for current document)

RoHS Compliant

Plotted and Other Data

2 Dimensional OML Drawing	PE9881-42
---------------------------	-----------

Notes:

- Values at +25 °C, sea level
- Beam Pattern 1.9 Degrees

Waveguide Horn Antenna Operates From 50 GHz to 75 GHz With a Maximum 42 dBi Gain WR-15 Input from Pasternack Enterprises has same day shipment for domestic and International orders. Our RF, microwave and millimeter wave products maintain a 99% availability and are part of the broadest selection in the industry.

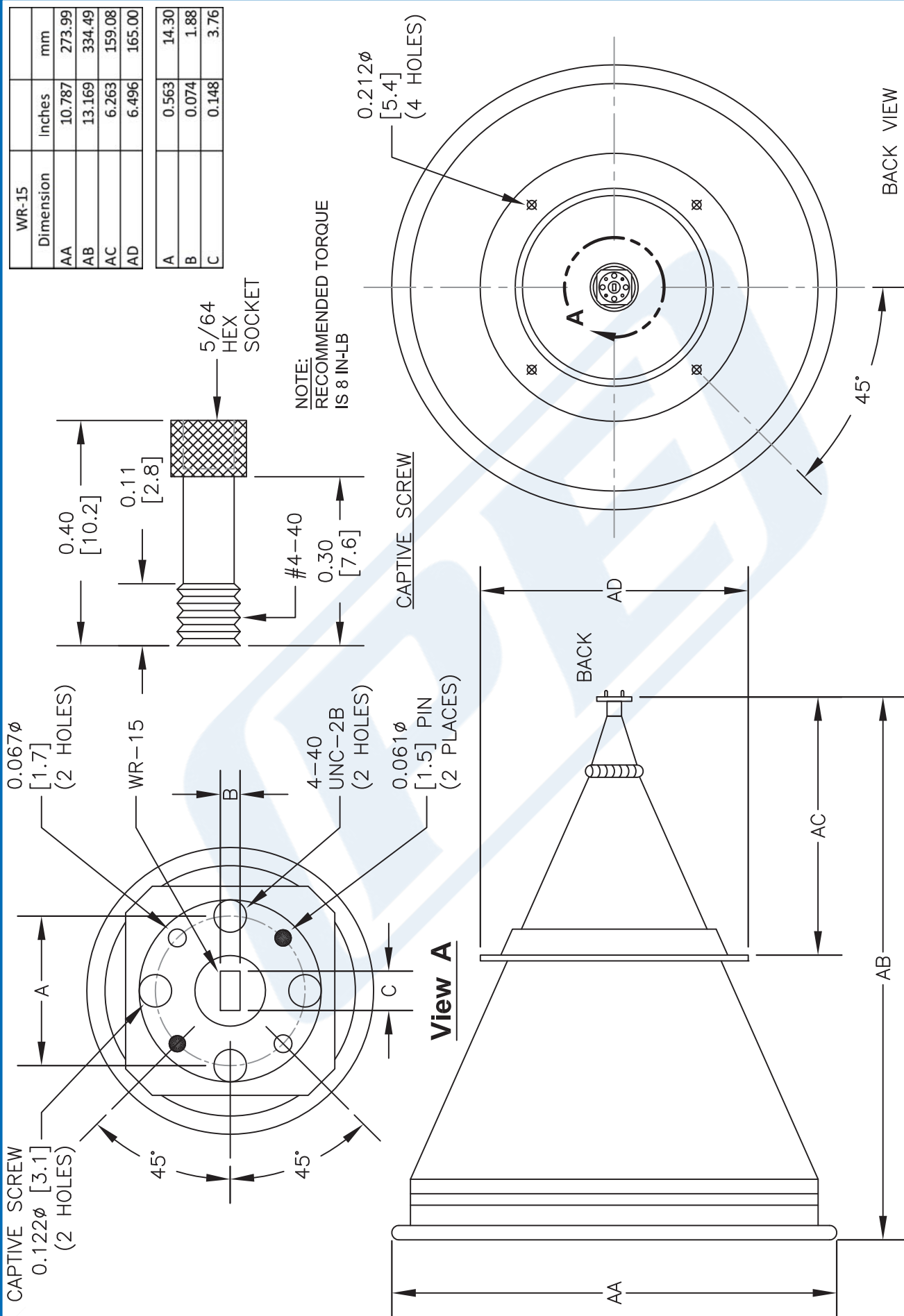
Click the following link (or enter part number in "SEARCH" on website) to obtain additional part information including price, inventory and certifications: [Waveguide Horn Antenna Operates From 50 GHz to 75 GHz With a Maximum 42 dBi Gain WR-15 Input PE9881-42](http://www.pasternack.com/horn-antenna-50-75-ghz-nominal-42-dbi-gain-wr-15-pe9881-42-p.aspx)

URL: <http://www.pasternack.com/horn-antenna-50-75-ghz-nominal-42-dbi-gain-wr-15-pe9881-42-p.aspx>

The information contained in this document is accurate to the best of our knowledge and representative of the part described herein. It may be necessary to make modifications to the part and/or the documentation of the part, in order to implement improvements. Pasternack reserves the right to make such changes as required. Unless otherwise stated, all specifications are nominal. Pasternack does not make any representation or warranty regarding the suitability of the part described herein for any particular purpose, and Pasternack does not assume any liability arising out of the use of any part or documentation.

PE9881-42 CAD Drawing

Waveguide Horn Antenna Operates From 50 GHz to 75 GHz
With a Maximum 42 dBi Gain WR-15 Input



DWG TITLE

PE9881-42

NOTES:
1. UNLESS OTHERWISE SPECIFIED ALL DIMENSIONS ARE NOMINAL.
2. ALL SPECIFICATIONS ARE SUBJECT TO CHANGE WITHOUT NOTICE AT ANY TIME.
3. DIMENSIONS ARE IN INCHES [mm].

Pasternack Enterprises, Inc.
P.O. Box 16759 | Irvine | CA | 92623
Phone: (949) 261-1920 | Fax: (949) 261-7451
Website: www.pasternack.com | E-Mail: sales@pasternack.com

FSCM NO. 53919

CAD FILE 031714

SCALE N/A

SIZE A

150