

| REVISIONS |                  |        |          |
|-----------|------------------|--------|----------|
| DATE      | DESCRIPTION      | DATE   | APPROVED |
| 2/7/09    | ORIGINAL RELEASE | 2/7/09 |          |

**Description:**

Low Noise Amplifier designed for Military and Industrial applications. This amplifier is supplied in our standard PE2 housing that can be used as a SMA connectorized or a surface mount component. Other packages and connector types are available.

This model provides the following performance. Data is available upon request.

**Specifications:**

- Frequency Range:  
Gain:  
Gain Flatness:  
Noise Figure:  
OP1dB:  
VSWR Input/Output:  
DC Voltage Supply:  
DC Current Draw:
- 0.25 to 4.0 GHz  
45dB Typ.  
+/-1.0dB Max.  
5.0dB Typ.  
20dBm Min.  
2.0:1 Max.  
+12 to +15VDC  
385mA Max.

**Features:**

- Internal Voltage Regulation  
Unconditional Stability  
Standard Operating Temperature -20 to +70 Deg. C

**Available Options:**

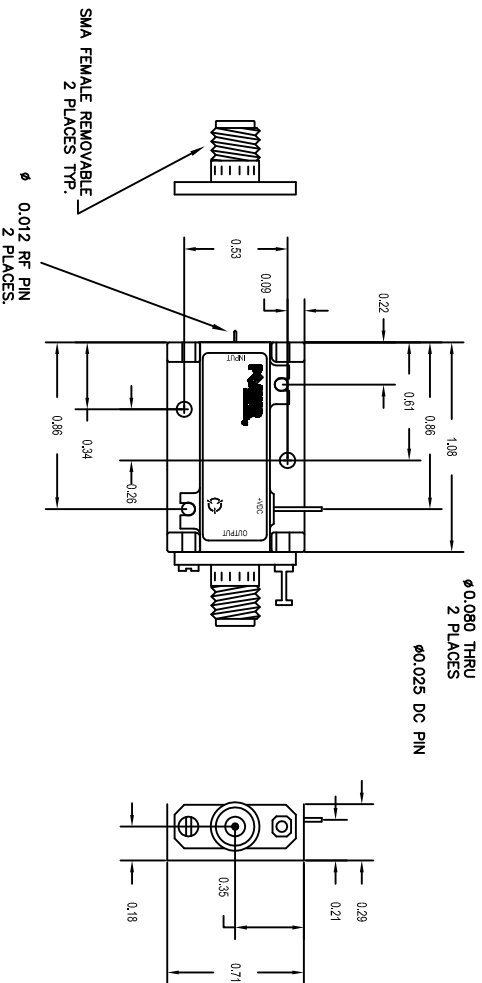
- Various Package types  
Various Connector types  
Temperature Compensation  
Hermetic Sealing  
Gain and Phase Matching  
MIL-STD-883 Screening Available

**Environmental Ratings:**

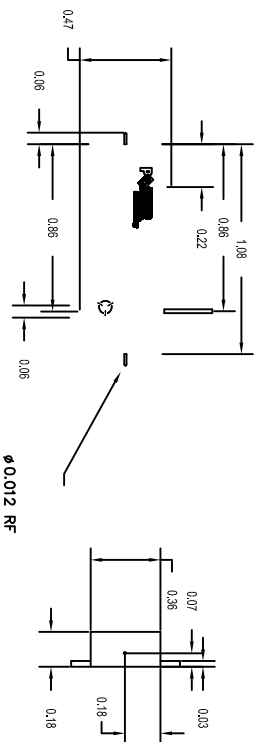
- Temperature:  
Humidity:  
Shock:  
Altitude:  
Temperature Cycle:
- 20 to +70 Deg. C (Operating) ; -55 to +85 Deg C (Available)  
-55 to +125 Deg. C (Storage)  
MIL-STD-202F, METHOD 103B COND B.  
MIL-STD-202F, METHOD 213B COND B.  
MIL-STD-202F, METHOD 105C COND B.  
MIL-STD-202F, METHOD 107D COND A

Note: The above specifications are subject to change or revision.

PE2 HOUSING WITH CARRIER



PE2 HOUSING WITHOUT CARRIER (SURFACE MOUNT)



UNLESS OTHERWISE SPECIFIED  
DIMENSIONS ARE IN INCHES  
TOLERANCES ARE:  
FRACTIONS DECIMALS ANGLES  
± .XX ± 0.010 ±  
.XXX ± 0.005

| PART NO.                     |  | DATE                         |  | TITLE                        |  |
|------------------------------|--|------------------------------|--|------------------------------|--|
| MATERIAL:                    |  | APPROVALS                    |  | DATE                         |  |
| 6061-T6 Aluminum             |  | K. Mason                     |  | 2/27/09                      |  |
| FINISH:                      |  | TOLERANCES ARE:              |  | FRACTIONS DECIMALS ANGLES    |  |
| Gold Plate over Nickel       |  | ±                            |  | ±                            |  |
| DO NOT SCALE DRAWING         |  | ±                            |  | ±                            |  |
| PE2-45-0825AR0-5R0-22-12-SFF |  | PE2-45-0825AR0-5R0-22-12-SFF |  | PE2-45-0825AR0-5R0-22-12-SFF |  |
| B.1LK53                      |  | B.1LK53                      |  | B.1LK53                      |  |
| WEB - MODEL                  |  | WEB - MODEL                  |  | WEB - MODEL                  |  |
| A                            |  | A                            |  | A                            |  |